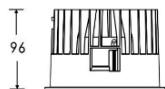
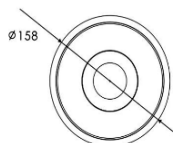


## ZAINA



### Features:

ZAINA Is Recessed downlight provides a more subtle and modern aesthetic that is installed into a ceiling or wall, creating a clean, streamlined look.

Die-cast aluminum made of a mold, under high pressure. This process is used to create parts for recessed downlights, due to its ability to produce intricate and durable designs.

Aluminum is a lightweight yet strong material, making it resistant to impact and wear.

Excellent thermal conductivity, allowing the downlight to dissipate heat efficiently

Available with reflector, the reflector is typically made from a reflective material and is available in various finishes ( Matt White, Matt Black, Matt Silver, Matt Gold,...) to influence the light's quality and appearance.

### Technical Specifications:

Input Voltage: 220- 240 V AC, 50 Hz.  
 Wattage: 35W  
 High Efficiency: 90lm/w  
 3 STEP Mac Adam  
 High efficiency, low flicker driver  
 Lamp Type: COB  
 Operating Temperature: -20°C to 45°C  
 Glow Wire Test 850° C  
 Warranty: 5 Years  
 Life Time: 50,000hrs at ta 25°C  
 (L80/B10)

### Fields of Application:

Retail  
 Education  
 Galleries hotels  
 Living spaces

### Installation Method:

Recessed

Wattage(W)	:	35				
Finish	:	White(W)	Black(B)			
Kelvin*	:	2700K	3000K	4000K	5000K	6000K
Beam Angle	:	15°	24°	36°	60°	
CRI	:	90+				
Driver	:	ON/OFF	0/1-10V	DALI	Phase Dimming	Bluetooth

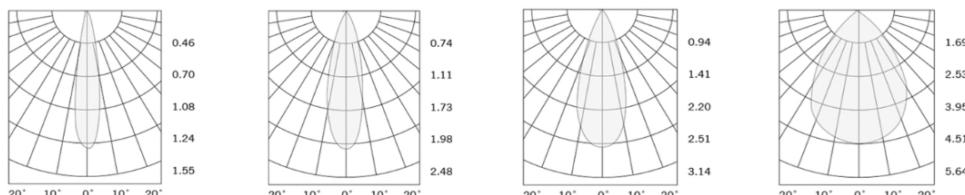
\*Special Color and Finish on request

### Product Code (96815835):

Wattage	Lumens(lm)	Dimension(Ø x H) mm	Cut Out (mm)
35	3150LM	158x96	145

\*Luminous lux value is calculated for 4000K CRI>80

### Photometric:



Pluxb luminaires are developed with globally recognized and tested components suppliers, however as per international standards tolerance in initial flux and connected load is at ±5%. Unless stated otherwise, the values apply to an ambient temperature of 25°C

## Standards

EN 60598-1

EN 60598-2-2

EN 60598-2-22

EN 60598-3-2

EN 60598-3-3

Order Code Ex: 96815835 27K 15D 9 1 W

CCT	Beam Angle	CRI	Driver	Finish
27K - 2700K	15D - 15°	9->90	1 - ON/OFF	W-White
30K - 3000K	24D - 24°		2 - 0/1-10V	B-Black
40K - 4000K	36D - 36°		3 - DALI	
50K - 5000K	60D - 60°		4 - Phase Dimming	
60K - 6000K			5 - Bluetooth	

Pluxb luminaires are developed with globally recognized and tested components suppliers, however as per international standards tolerance in initial flux and connected load is at  $\pm 5\%$ . Unless stated otherwise, the values apply to an ambient temperature of 25°C