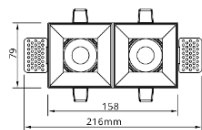
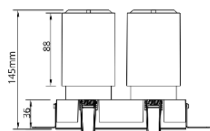
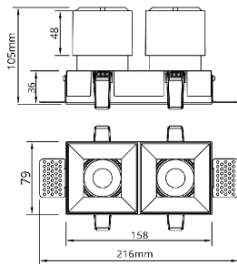


VYRE



Features:

VYRE is an Recessed Adjustable Downlight with the sleek property for Ambient lighting. Crafted from PMMA optics and die cast Aluminum this fixture ensures longevity, superior heat dissipation.

The product has customized IP20 / IP44, it will be as required.

Each lamp head features a 30° left-and-right tilt, allowing you to direct light precisely where it's needed. The entire module boasts an impressive 355° rotation, offering near-complete flexibility for optimal alignment.

Technical Specifications:

Input Voltage: 220- 240 V AC, 50 Hz.

Wattage: 2x15 - 2x25 W

High Lumen: 90lm/w

3 STEP Mac Adam

High efficiency, low flicker driver

Lamp Type: COB

Operating Temperature: -20°C to 45°C

Glow Wire Test 850° C

Warranty: 5 Years

Life Time: 50,000hrs at 25°C (L80/B10).

Fields of Application:

- Retail
- Galleries hotels
- Living spaces
- Conference rooms
- Counters
- Restaurants

Installation Method:

Recessed Trimless

Wattage	:	15	20	25			
Finish	:	White(W)					
Kelvin*	:	2700K	3000K	3500K	4000K	5000K	5700K
Beam Angle	:	18°	24°	36°	50°		
CRI	:	90+					
Driver	:	ON/OFF	0/1-10V	DALI	Phase Dimming		

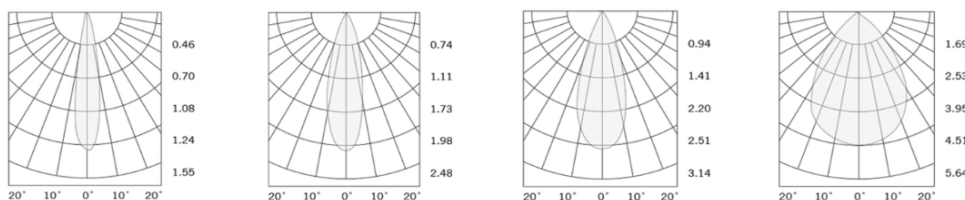
*Special Color & Finish on request

Product Code (97821625.40):

Wattage	Lumens(lm)	Dimension(LxWxH) mm	Cut Out (mm)
2x15	2700LM	216x79x105	165x80
2x20	3600LM	216x79x125	165x80
2x25	4500LM	216x90x145	165x80

*Luminous flux value is calculated for 4000K CRI>80

Photometric:



Pluxb luminaires are developed with globally recognized and tested components suppliers, however as per international standards tolerance in initial flux and connected load is at ±5%. Unless stated otherwise, the values apply to an ambient temperature of 25°C

Standards

EN 60598-1

EN 60598-2-2

EN 60598-2-22

EN 60598-3-2

EN 60598-3-3

Order Code Ex: 97821625.40 27K 18D 9 1 W

CCT	Beam Angle	CRI	Driver	Finish
27K - 2700K	18D - 18°	9->90	1 - ON/OFF	W-White
30K - 3000K	24D - 24°		2 - 0/1-10V	
35K - 3500K	36D - 36°		3 - DALI	
40K - 4000K	50D - 50°		4 - Phase Dimming	
50K - 5000K				
57K - 5700K				

Pluxb luminaires are developed with globally recognized and tested components suppliers, however as per international standards tolerance in initial flux and connected load is at $\pm 5\%$. Unless stated otherwise, the values apply to an ambient temperature of 25°C