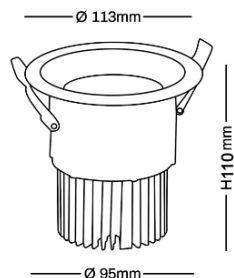
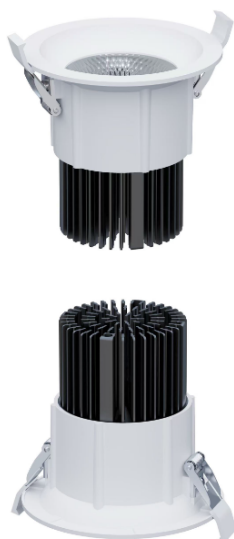


VIBE II



Features:

VIBE II series is Recessed Downlight, expertly crafted from premium aluminum and finished with a solvent-free powder coating to ensure long-lasting durability and resistance to wear. Aluminum Body for multiple heads, after dusting between the lights do not see the lights, the effect is very good.

High quality of aluminum reflector with Narrow, medium and wide beam angle available and glass diffuser.

For enhanced customization, various CRI (Color Rendering Index) and CCT (Correlated Color Temperature) options are available upon request, allowing designers to create the perfect lighting atmosphere.

The most classic and practical lamps, super versatile.

Available options color with White, Black or Chrome.

Product has the structure and appearance Ensures UGR<19.

Homogenous, well-balanced light dispersing, no shadow.

Technical Specifications:

Input Voltage: 220- 240V AC,60/50 Hz.

Wattage: 15-28W

Efficiency: 110lm/w

3 STEP Mac Adam

High efficiency, low flicker driver

Driver Brand: Vossloh Schwabe (VS)

Lamp Type: COB

Lamp Brand: Vossloh Schwabe (VS)

Operating Temperature: -20°C to 50°C

Glow Wire Test 960° C

Warranty: 5 Years

Life Time: 50,000hrs at ta 25°C

(L80/B10)

Fields of Application:

Retail

Education

Galleries hotels

Living spaces

Installation Method:

Recessed

Wattage(W)	:	15	20	28			
Finish	:	Black(B)	White(W)	Gray(G)			
Kelvin*	:	2700K	3000K	3500K	4000K	5000K	6500K
Beam Angle	:	15°	24°	36°	47°	60°	
CRI	:	80+	90+	95+			
Driver	:	ON/OFF	0/1-10V	DALI	Phase Dimming	Bluetooth	

*Special Color & Finish on request

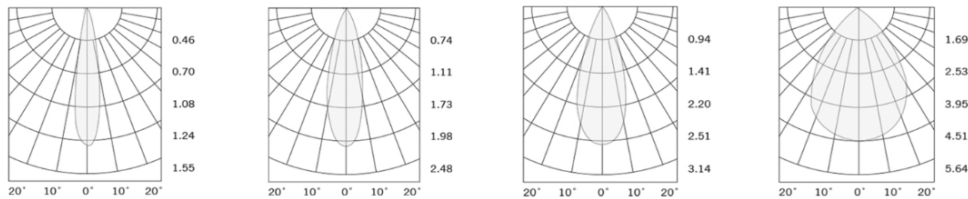
Product Code (96811328):

Wattage	Lumens(lm)	Dimension(Ø x H) mm	Cut Out (mm)
15	1560LM	113x110	95
20	2200LM	113x110	95
28	3080LM	113x110	95

*Luminous flux value is calculated for 4000K CRI>80

Pluxb luminaires are developed with globally recognized and tested components suppliers, however as per international standards tolerance in initial flux and connected load is at ±5%. Unless stated otherwise, the values apply to an ambient temperature of 25°C

Photometric:



Standards

- EN 60598-1
- EN 60598-2-2
- EN 60598-2-22
- EN 60598-3-2
- EN 60598-3-3

Order Code Ex: 96811328 27K 15D 8 1 B

CCT	Beam Angle	CRI	Driver	Finish
27K - 2700K	15D - 15°	8->80	1 - ON/OFF	B-Black
30K - 3000K	24D - 24°	9->90	2 - 0/1-10V	W-White
35K - 3500K	36D - 36°	9->95	3 - DALI	G-Gray
40K - 4000K	47D - 47°		4 - Phase Dimming	
50K - 5000K	60D - 60°		5 - Bluetooth	
65K - 6500K				

Pluxb luminaires are developed with globally recognized and tested components suppliers, however as per international standards tolerance in initial flux and connected load is at ±5%. Unless stated otherwise, the values apply to an ambient temperature of 25°C