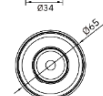
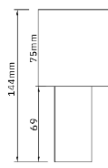
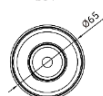
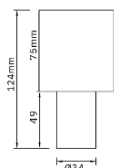


## VEXA



### Features:

VEXA is an Recessed Adjustable Downlight with the sleek and versatile property for ambient lighting.

Crafted from PMMA optics and die cast Aluminum, this fixture ensures longevity, superior heat dissipation.

The lamp head can be adjusted left and right at an angle of 50 °, and the overall module can be rotated by 355 ° to accurately adjust the lamp for optimal alignment. Therefore, the light is precisely directed to the desired location.

### Technical Specifications:

Input Voltage: 220- 240 V AC, 50 Hz.

Wattage: 8 - 10W

High Lumen: 90lm/w

3 STEP Mac Adam

High efficiency, low flicker driver

Lamp Type: COB

Operating Temperature: -20°C to 45°C

Glow Wire Test 850° C

Warranty: 5 Years

Life Time: 50,000hrs at 25°C (L80/B10).

### Fields of Application:

Retail

Galleries hotels

Living spaces

Conference rooms

Counters

Restaurants

### Installation Method:

Surface Mounted. Adjustable.

Wattage	:	8	10				
Finish	:	White(W)					
Kelvin*	:	2700K	3000K	3500K	4000K	5000K	5700K
Beam Angle	:	18°	24°	36°	60°		
CRI	:	90+					
Driver	:	ON/OFF	0/1-10V	DALI	Phase Dimming		

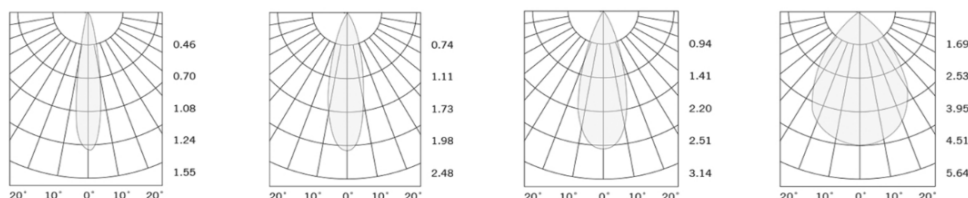
\*Special Color & Finish on request

### Product Code (96806410.50):

Wattage	Lumens(lm)	Dimension(ØxH)mm
8	720LM	65x124
10	900LM	65x144

\*Luminous flux value is calculated for 4000K CRI>80

### Photometric:



- Standards
- EN 60598-1
- EN 60598-2-2
- EN 60598-2-22
- EN 60598-3-2
- EN 60598-3-3

Order Code Ex: ~~96806410.50~~ 27K 18D 9 1 W

CCT	Beam Angle	CRI	Driver	Finish
27K - 2700K	18D - 18°	9->90	1 - ON/OFF	W-White
30K - 3000K	24D - 24°		2 - 0/1-10V	
35K - 3500K	36D - 36°		3 - DALI	
40K - 4000K	60D - 60°		4 - Phase Dimming	
50K - 5000K				
57K - 5700K				

Pluxb luminaires are developed with globally recognized and tested components suppliers, however as per international standards tolerance in initial flux and connected load is at ±5%. Unless stated otherwise, the values apply to an ambient temperature of 25°C