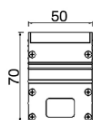
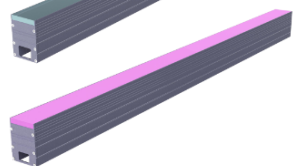
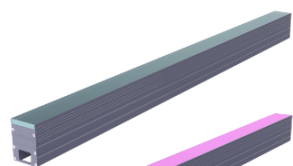
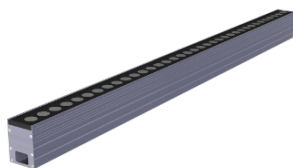


## TITAN



### Description:

TITAN is a Linear inground outdoor lighting fixtures designed to be installed flush with the ground surface, providing subtle and aesthetically pleasing illumination.

These lights typically have a linear or elongated shape, allowing them to seamlessly blend into pathways, driveways, or other outdoor areas. Linear inground lights often feature durable and weather-resistant materials to withstand outdoor conditions.

Toughened glass surface, with high hardness, not easy to break. It comes with different CCT and C5 Marine Grade Coating, this family is a perfect solution to the requirement.

The length can be customized 250mm, 500mm, 750mm, 1.5mtr. They are commonly used for accentuating architectural features, guiding pathways, or creating ambiance in outdoor spaces.

### Product Specifications:

Front cover : Stainless steel 304  
Housing : Die cast Aluminum  
Glass : Tempered glass  
Gasket: Molding shaped silicone seal  
Accessory: Side cover  
Lens/Reflector : Optical lens (efficiency>90%)  
Power Cable: 0.5 mt. power cable included  
Driver : High efficiency, low flicker driver  
Installation Type: Inground

### Technical Specifications:

Wattage: 24 - 40W  
Voltage: DC24V  
Frequency: 50-60Hz  
Light Source: OSRAM/EPISTAR/CREE  
Lumen: 120lm/W  
Mac Adam: 3 Step  
Safety Class: III  
Working Temperature:-25°C to 60°C  
Life Time: 50,000hrs (L80/B10) at 35°C  
Humidity : <95%  
Warranty: 5 Years

### Parameter:

|              |   |  |
|--------------|---|--|
| Wattage(W)   | : | 24W / 40W                                |
| Finish       | : | Stainless Steel 316                      |
| Kelvin*      | : | 2700K/ 3000K/ 3500K/ 4000K/ 5700K/ 6000K |
| Beam Angle   | : | 8°/ 12°/ 25°/ 35°/ 45°/ 55°              |
| CRI          | : | 80+                                      |
| Control Mode | : | ON/OFF / DALI / 0 / 1-10V / Phase Cut    |

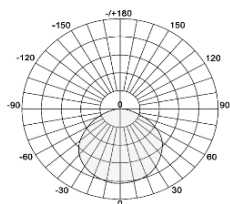
### Order Code:

| Product Code | Wattage  | CCT      | Voltage | Beam Angle | Finish                 | Control Mode |
|--------------|----------|----------|---------|------------|------------------------|--------------|
| 549507040    | 24 - 24W | 27-2700K | D-24VDC | 8-8°       | SS-Stainless Steel 316 | 1-ON/OFF     |
|              | 40 - 40W | 30-3000K |         | 12-12°     |                        | 2-DALI       |
|              |          | 35-3500K |         | 25-25°     |                        | 3-0/1-10V    |
|              |          | 40-4000K |         | 35-35°     |                        | 4-Phase cut  |
|              |          | 57-5700K |         | 45-45°     |                        |              |
|              |          | 60-6000K |         | 55-55°     |                        |              |

5495070402427D'8S

Ex: Order Code: S1

### Photometric:



### Standards :

EN 60598-1

EN 60598-2-2

EN 60598-3-2

EN 60598-3-3

Pluxb luminaires are developed with globally recognized and tested components suppliers, however as per international standards tolerance in initial flux and connected load is at  $\pm 5\%$ . Unless stated otherwise, the values apply to an ambient temperature of 25°C