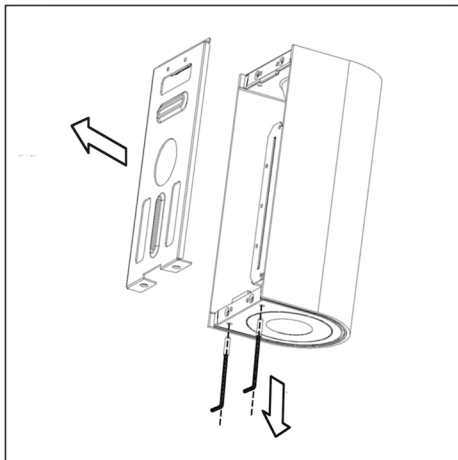
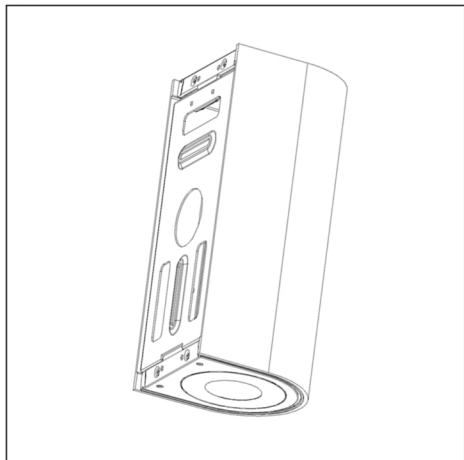
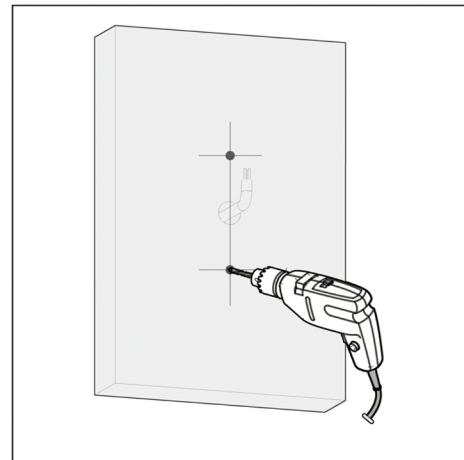


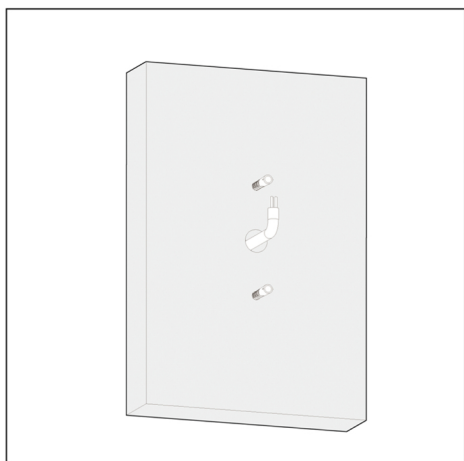
Installation instruction



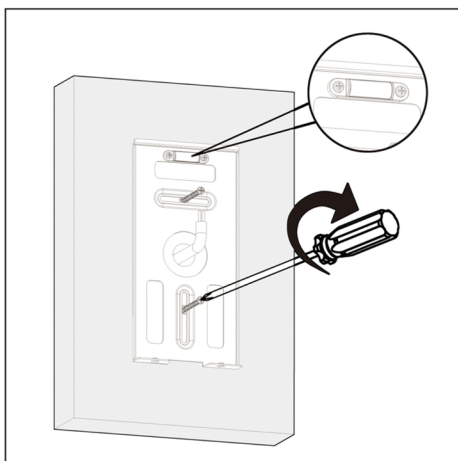
1. take off the mounting bracket by Allen-key screw driver.



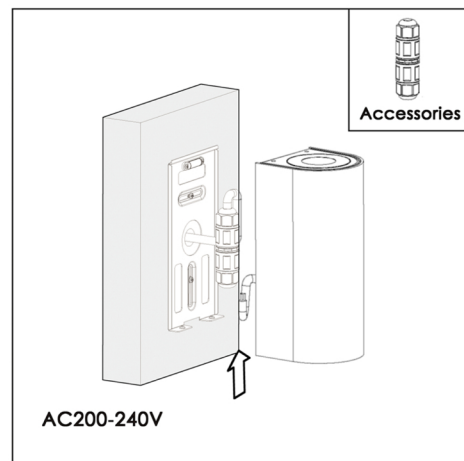
2. Drill two holes on the wall ($\Phi=8\text{mm}$, depth=50mm, distance 85-125mm)



3. Fix the expansion bolt into the holes

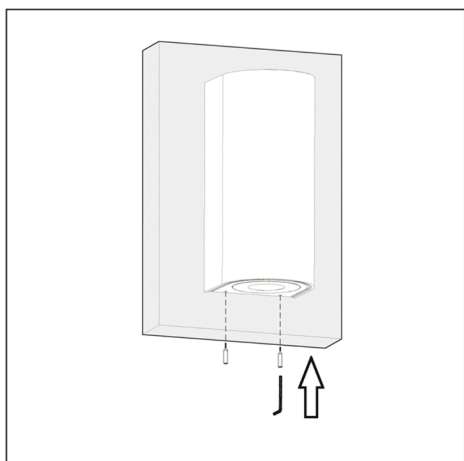


4. Fix the mounting bracket onto the wall by screws (gradienter to ensure the level)



AC200-240V

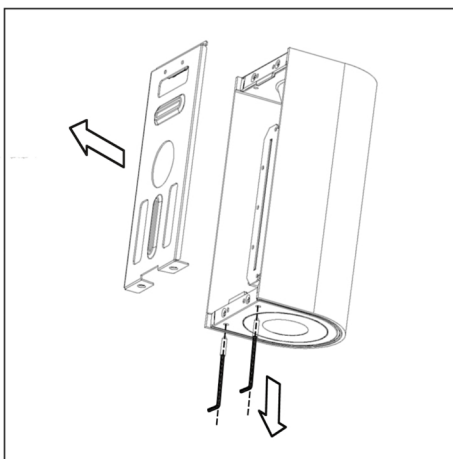
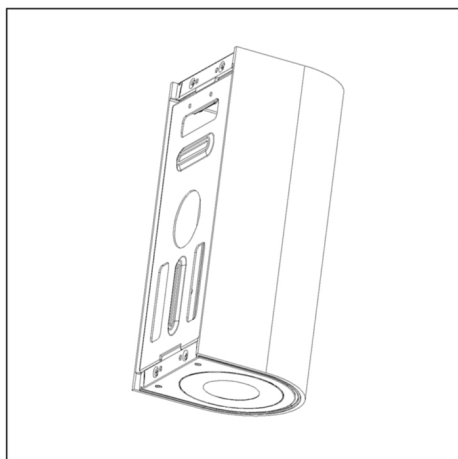
5. Connect the power cable (make sure the switch is turned off)



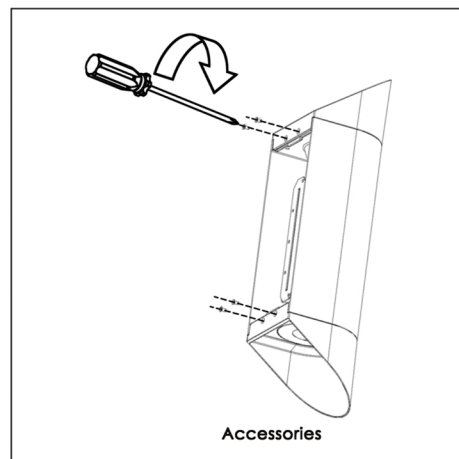
6. Fix the light to the bracket by screws

Pluxb luminaires are developed with globally recognized and tested components suppliers, however as per international standards tolerance in initial flux and connected load is at $\pm 5\%$. Unless stated otherwise, the values apply to an ambient temperature of 25°C

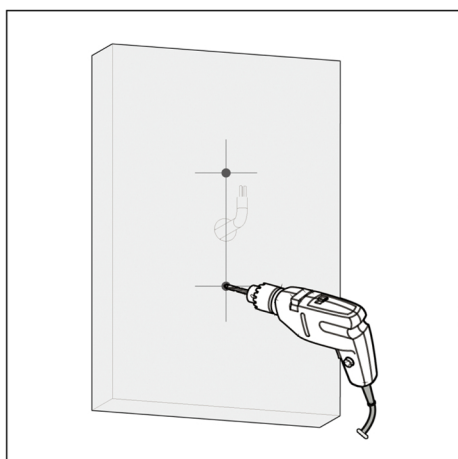
Installation instruction



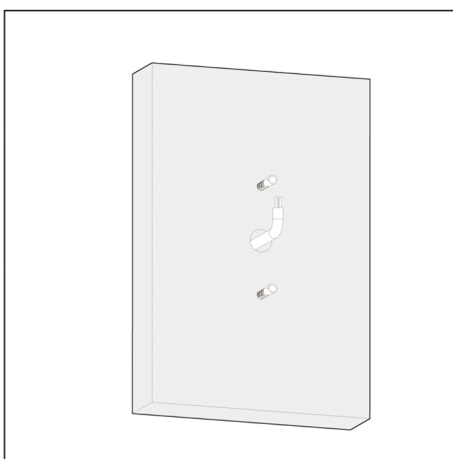
1. take off the mounting bracket by Allen-key screw driver.



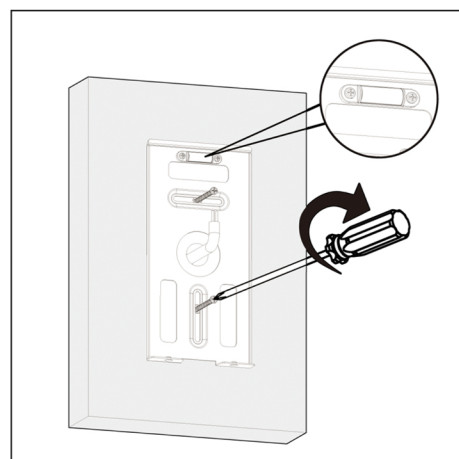
2. Install the anti-glare hood



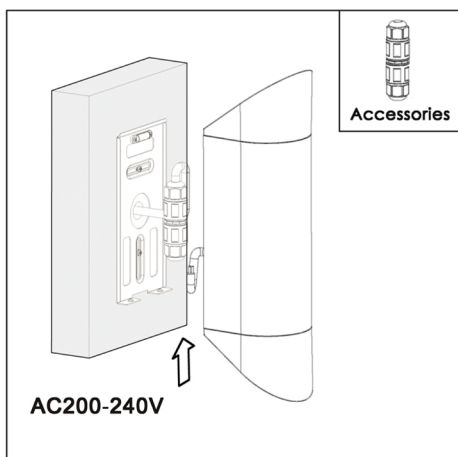
3. Drill two holes on the wall
($\Phi=8\text{mm}$, depth=50mm, distance 85-125mm)



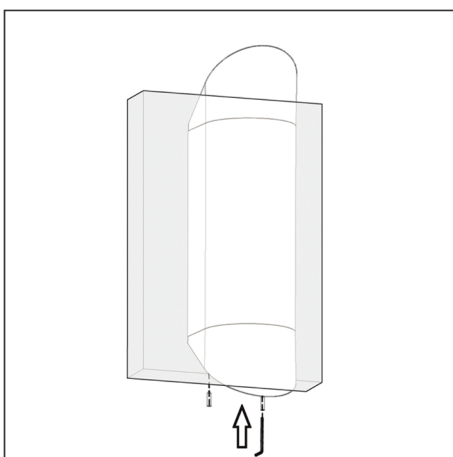
4. Fix the expansion bolt into the holes



5. Fix the mounting bracket onto the wall by screws
(gradienter to ensure the level)



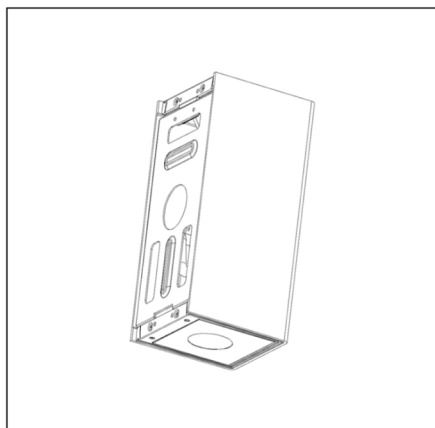
6. Connect the power cable
(make sure the switch is turned off)



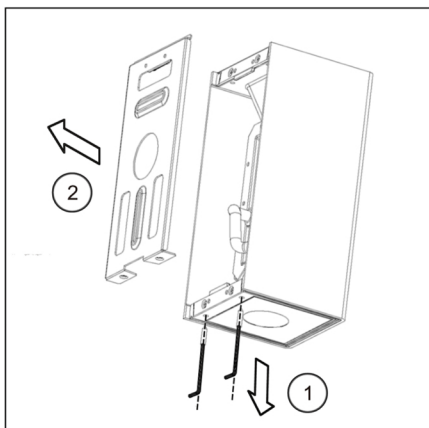
7. Fix the light to the bracket by screws

Pluxb luminaires are developed with globally recognized and tested components suppliers, however as per international standards tolerance in initial flux and connected load is at $\pm 5\%$. Unless stated otherwise, the values apply to an ambient temperature of 25°C

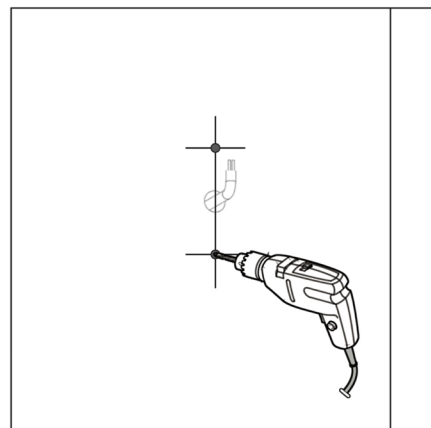
Installation instruction



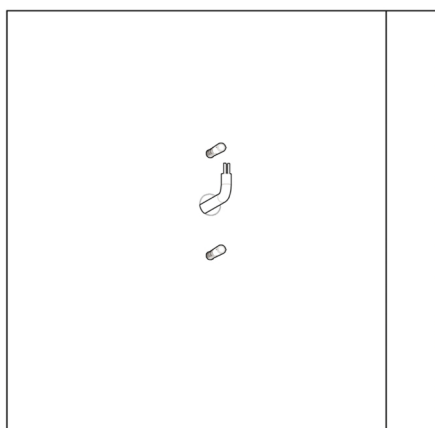
the leds are not replaceable



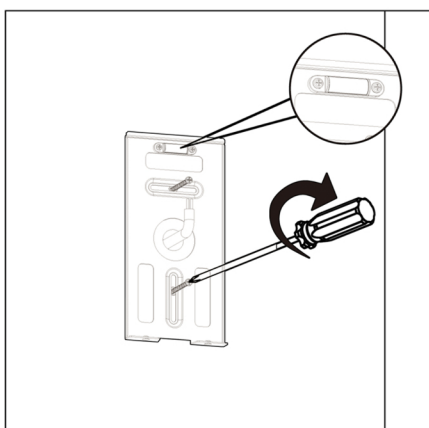
1. take off the mounting bracket by Allen-key screw driver.



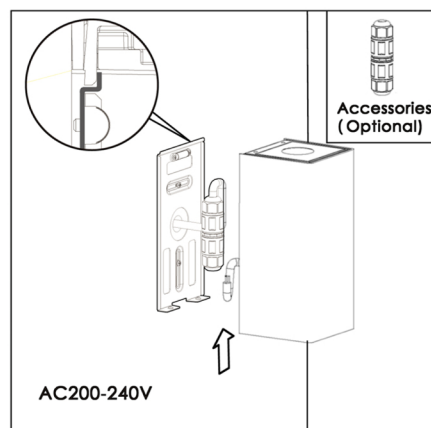
2. Drill two holes on the wall
($\Phi=8\text{mm}$, depth=50mm, distance 85-125mm)



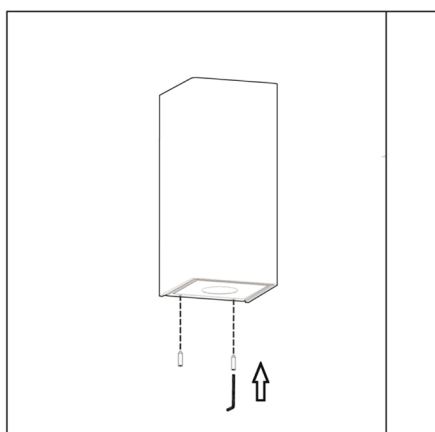
3. Fix the expansion bolt into the holes



4. Fix the mounting bracket onto the wall by screws
(gradienter to ensure the level)



5. Connect the power cable
(make sure the switch is turned off)

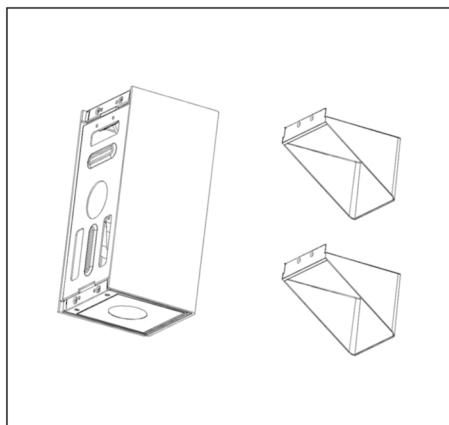


6. Fix the light to the bracket by screws

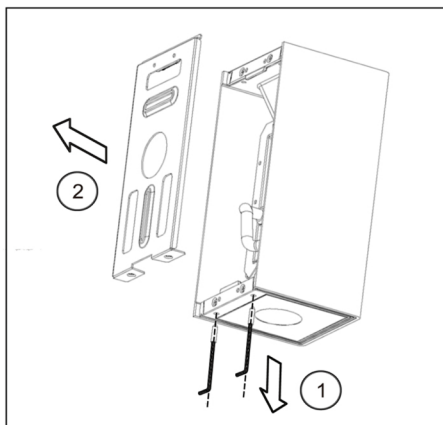
! if the external flexible cable or cord of this luminaire is damaged, it shall be exclusively replaced by the manufacturer or his service agent or a similar qualified person in order to avoid a hazard.

Pluxb luminaires are developed with globally recognized and tested components suppliers, however as per international standards tolerance in initial flux and connected load is at $\pm 5\%$. Unless stated otherwise, the values apply to an ambient temperature of 25°C

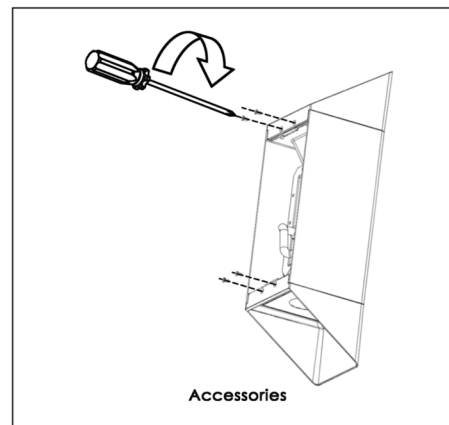
Installation instruction



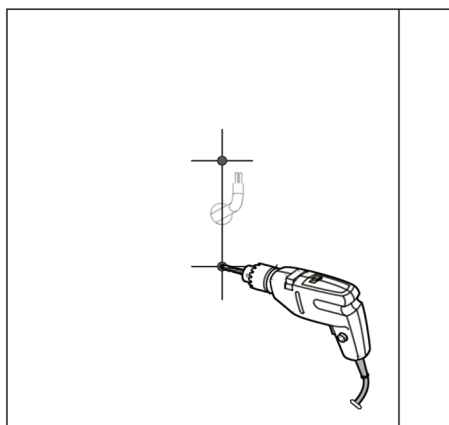
the leds are not replaceable



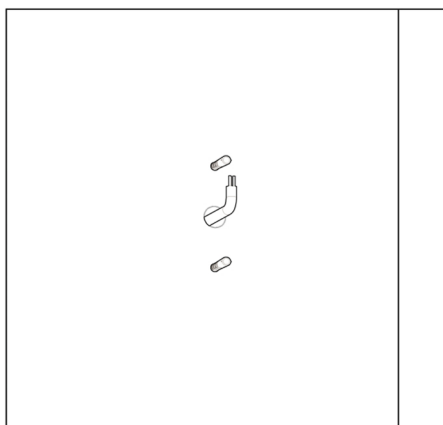
1. take off the mounting bracket by Allen-key screw driver.



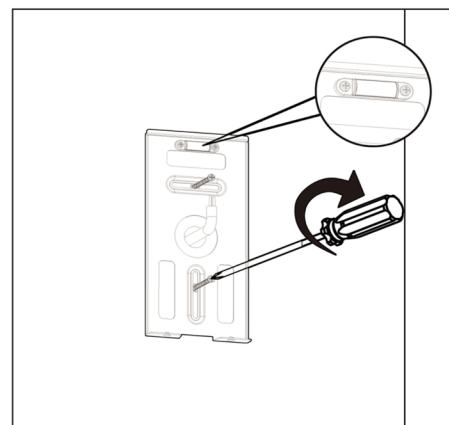
2. Install the anti-glare hood



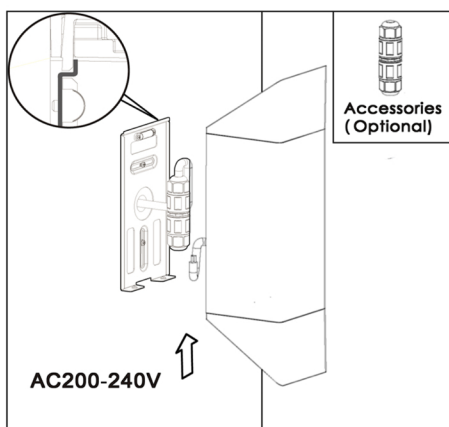
3. Drill two holes on the wall
($\Phi=8\text{mm}$, depth=50mm, distance 85-125mm)



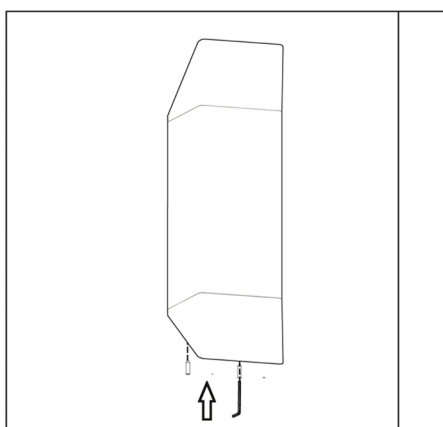
4. Fix the expansion bolt into the holes



5. Fix the mounting bracket onto the wall by screws
(gradienter to ensure the level)



6. Connect the power cable
(make sure the switch is turned off)



7. Fix the light to the bracket by screws

! if the external flexible cable or cord of this luminaire is damaged, it shall be exclusively replaced by the manufacturer or his service agent or a similar qualified person in order to avoid a hazard.

Pluxb luminaires are developed with globally recognized and tested components suppliers, however as per international standards tolerance in initial flux and connected load is at $\pm 5\%$. Unless stated otherwise, the values apply to an ambient temperature of 25°C