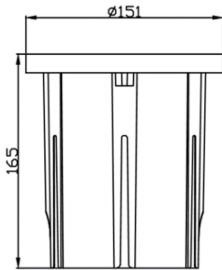
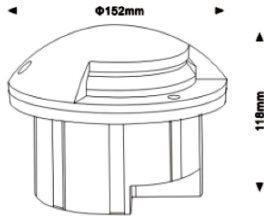
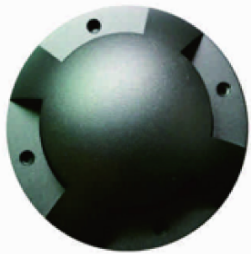


THRES'3H



Description:

THRES'3H is Inground side light typically feature durable, weather-resistant housings suitable for outdoor use. Excellent heat dissipation. It include features such as corrosion resistance , dustproof, anodized and polished, sand blasted, not easy to rust and fade. IK10 indicates they are highly resistant to impacts, equivalent to a high mass dropped from a height. Toughened surface, with high hardness, not easy to break. It comes with different CCT , R/G/B LED sources and various beam angles this family is a perfect solution to the requirement. It has very wide application like For landscape lighting, garden lighting, horticultural engineering design, public fountain square Lighting.

Product Specifications:

Front cover : Die cast Aluminum
 Housing : Die cast Aluminum grey
 Glass : PC Shade
 Gasket: Molding shaped silicone seal
 Lens/Reflector : Optical lens (efficiency>90%)
 Power Cable: 0.5 mt. power cable included
 Driver : High efficiency, low flicker driver
 Installation Type: Inground
 Adjustable: No

Technical Specifications:

Wattage: 10W
 Voltage: DC24V / 220-240VAC
 Frequency: 50-60Hz
 Light Source: OSRAM/EPISTAR/CREE
 Lumen: 100lm/W
 Mac Adam: 3 Step
 Safety Class: III / II
 Working Temperature:-20°C to 55°C
 Life Time: 50,000hrs (L80/B10) at 35°C
 Warranty: 5 Years

Parameter:

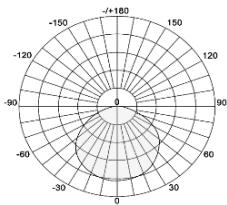
Wattage(W)	:	10W
Finish	:	Grey(G) / Customized (C)
Kelvin*	:	2700K/ 3000K / 4000K / 6000K / RGB
Beam Angle	:	120°
CRI	:	80
Control Mode	:	ON/OFF / DALI / 0 / 1-10V / Phase Cut

Order Code:

Product Code	Wattage	CCT	Voltage	Beam Angle	Finish	Control Mode
544149	10-10W(20*SMD 2835)	27-2700K	D-24VDC	120-120°	G-Grey	1-ON/OFF
		30-3000K			C-Customized	2-DALI
		40-4000K				3-0/1-10V
		60-6000K				4-Phase cut
		92-RGB				

Ex: Order Code: 5441491027D'120G1

Photometric:



Standards :

- EN 60598-1
- EN 60598-2-2
- EN 60598-3-2
- EN 60598-3-3

Pluxb luminaires are developed with globally recognized and tested components suppliers, however as per international standards tolerance in initial flux and connected load is at ±5%. Unless stated otherwise, the values apply to an ambient temperature of 25°C

Product Code	Wattage	CCT	Voltage	Beam Angle	Finish	Control Mode
544149	10-10W(20*SMD 2835)	27-2700K	A-220-240VAC	120-120°	G-Grey	1-ON/OFF
		30-3000K			C-Customized	2-DALI
		40-4000K				3-0/1-10V
		60-6000K				4-Phase cut

Ex: Order Code: 5441491027A120G1

Pluxb luminaires are developed with globally recognized and tested components suppliers, however as per international standards tolerance in initial flux and connected load is at $\pm 5\%$. Unless stated otherwise, the values apply to an ambient temperature of 25°C