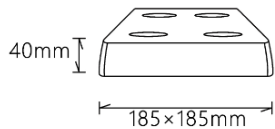
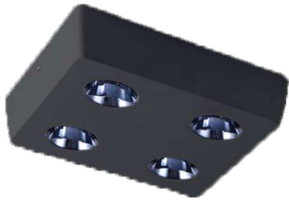


SURA



Features:

SURA Is Surface Mounted Up Downlight, means the fixture has a different shape from other shapes, which makes it elegant to suit all quiet places. This design is ideal for applications where a modern aesthetic is desired.

Die cast CNC aluminum body, is resistant to corrosion and physical impacts, that it has excellent thermal conductivity, which helps in dissipating heat generated by the light source. Product has Ultra compact design and ensures UGR<9.

Technical Specifications:

Input Voltage: 220- 240 V AC, 50 Hz.

Wattage: 20W

High Lumen: 95lm/w

3 STEP Mac Adam

High efficiency, low flicker driver

Lamp Type: COB

Operating Temperature: -20°C to 45°C

Glow Wire Test 850° C

Warranty: 5 Years

Life Time: 50,000hrs at ta 25°C

(L80/B10)



Fields of Application:

Retail

Education

Galleries hotels

Living spaces

Installation Method:

Surface Mounted.

Wattage(W)	:	20			
Finish	:	White(W)	Black(B)		
Kelvin*	:	2700K	3000K	4000K	5000K
Beam Angle	:	15°	24°	38°	60°
CRI	:	90+			
Driver	:	ON/OFF	0/1-10V	DALI	Phase Dimming Bluetooth

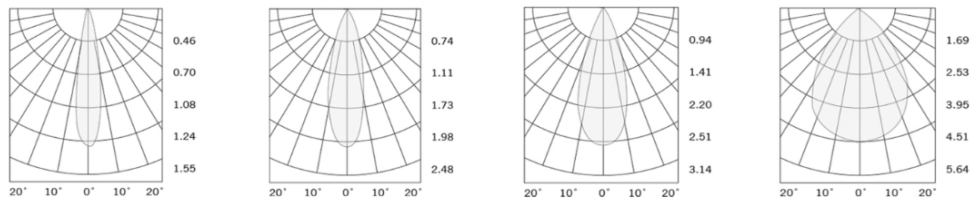
*Special Color and Finish on request

Product Code (96818520):

Wattage	Lumens(lm)	Dimension(LxWxH) mm
20	1900LM	185x185x40

*Luminous lux value is calculated for 4000K CRI>80

Photometric:



Standards

EN 60598-1

EN 60598-2-2

EN 60598-2-22

EN 60598-3-2

EN 60598-3-3

Order Code Ex: 96818520 27K 15D 9 1 W

CCT	Beam Angle	CRI	Driver	Finish
27K - 2700K	15D - 15°	9->90	1 - ON/OFF	W-White
30K - 3000K	24D - 24°		2 - 0/1-10V	B-Black
40K - 4000K	38D - 38°		3 - DALI	
50K - 5000K	60D - 60°		4 - Phase Dimming	
			5 - Bluetooth	

Pluxb luminaires are developed with globally recognized and tested components suppliers, however as per international standards tolerance in initial flux and connected load is at ±5%. Unless stated otherwise, the values apply to an ambient temperature of 25°C