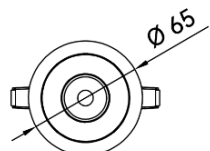
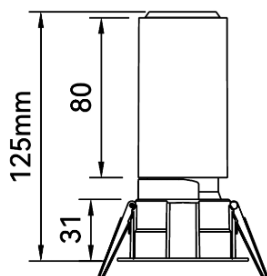


SNOW



Ø55-58mm



Features:

SNOW is simple and easy appearance, in line with contemporary aesthetic concept.

Aluminum Die-cast body with Excellent thermal property, Solvent Free Power Coating with RAL 9003, RAL 9005.

High reflectance aluminum reflector

Reflectors with Matt White, Matt Black, Chrome, Silver, Bronze and other special finish on request, and with Optical accessories Honeycomb, Spread Optics, Solite Optics.

The spot transition uniform and full without residual light.

High light Transmissivity.

Homogenous, well-balanced light dispersing, no shadow.

Technical Specifications:

Input Voltage: 220-240 V AC, 50 Hz.

Wattage: 15W

High Lumen: 100 lm/w

3 STEP Mac Adam

High efficiency, low flicker driver

Lamp Type: COB

Operating Temperature: -20°C to 45°C

Glow Wire Test 850° C

Warranty: 5 Years

Life Time: 50,000hrs at 25°C

(L80/B10).

Fields of Application:

Retail

Education

Galleries hotels

Living spaces

Conference rooms

Counters

Restaurants

Installation Method:

Recessed

Wattage(W)	:	15				
Finish	:	White(W)	Black(B)	Chrome(C)		
Kelvin*	:	2700K	3000K	4000K	5000K	5700K
Beam Angle	:	20°	30°	40°	50°	
CRI	:	90+				
Driver	:	ON/OFF	0/1-10V	DALI	Phase Dimming	Bluetooth

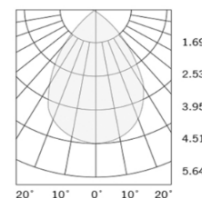
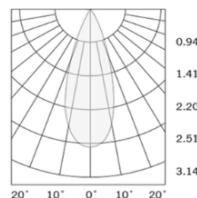
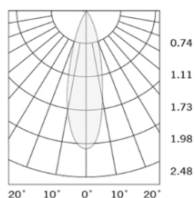
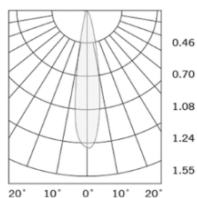
*Special Color and Finish on request

Product Code (96806515.50):

Wattage	Lumens(lm)	Dimension(Øx H) mm	Cut out  (mm)
15	1500LM	65x125	58

*Luminous flux value is calculated for 4000K CRI>80

Photometric:



- Standards
- EN 60598-1
- EN 60598-2-2
- EN 60598-2-22
- EN 60598-3-2
- EN 60598-3-3

Order Code Ex: ~~96806515.50~~ 27K 20D 9 1 W

CCT	Beam Angle	CRI	Driver	Finish
27K - 2700K	20D - 20°	9->90	1 - ON/OFF	W-White
30K - 3000K	30D - 30°		2 - 0/1-10V	B-Black
40K - 4000K	40D - 40°		3 - DALI	C-Chrome
50K - 5000K	50D - 50°		4 - Phase Dimming	
57K - 5700K			5 - Bluetooth	

Pluxb luminaires are developed with globally recognized and tested components suppliers, however as per international standards tolerance in initial flux and connected load is at ±5%. Unless stated otherwise, the values apply to an ambient temperature of 25°C