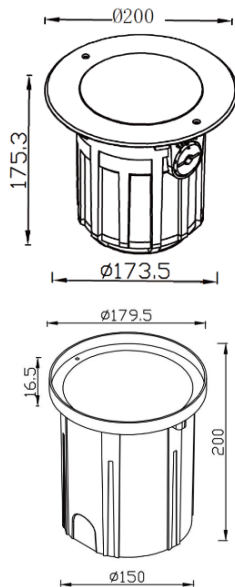
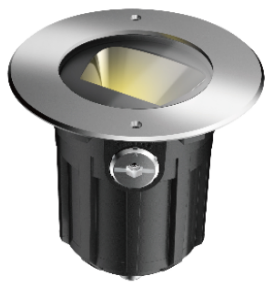


SKEW



Description:

SKEW is asymmetric reflector Inground light typically feature durable, weather-resistant housings suitable for outdoor use. Excellent heat dissipation.

It include features such as corrosion resistance , dustproof, anodized and polished, sand blasted, not easy to rust and fade.

Toughened glass surface, with high hardness, not easy to break.

It comes with different CCT sources and various beam angles this family is a perfect solution to the requirement.

It has very wide application like For landscape lighting, garden lighting, horticultural engineering design, public fountain square Lighting.

Product Specifications:

Front cover : Stainless Steel 316 SUS

Housing : Die cast aluminum grey

Coating: Powder Coating

Glass : Tempered glass

Gasket: Molding shaped silicone seal

Lens/Reflector : Optical lens (efficiency>90%)

Power Cable: 0.5 mt. power cable included

Driver : High efficiency, low flicker driver

Installation Type: Inground

Adjustable: Yes

Technical Specifications:

Wattage:35W

Voltage: DC24V / 220-240V AC

Frequency: 50-60Hz

Light Source: OSRAM/EPISTAR/CREE

Lumen: 100lm/W

Mac Adam: 3 Step

Safety Class: III / II

Working Temperature:-20°C to 55°C

Life Time: 50,000hrs (L80/B10) at 35°C

Warranty: 5 Years

Parameter:

Wattage(W) : 35W

Finish : Stainless Steel 316 SUS (SS)

Kelvin* : 2700K/ 3000K / 4000K / 6000K

Beam Angle : 10° / 25° / 45° / 60° / Asymmetric

CRI : 80

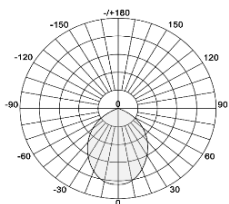
Control Mode : ON/OFF / DALI / 0 / 1-10V / Phase Cut / DMX

Order Code:

Product	Code	Wattage	CCT	Voltage(DC)	Beam Angle	Finish	Control Mode
544199		35C-35W COB	27-2700K	D-24VDC	10 - 10°	SS-Stainless Steel 316	1-ON/OFF
			30-3000K		25 - 25°		2-DALI
			40-4000K		45 - 45°		3-0/1-10V
			60-6000K		60 - 60°		4-Phase cut
					AS-Asymmetric		5-DMX

Ex: Order Code: 54419935C27D'10SS1

Photometric :



Standard:

EN 60598-1

EN 60598-2-2

EN 60598-3-2

EN 60598-3-3

Pluxb luminaires are developed with globally recognized and tested components suppliers, however as per international standards tolerance in initial flux and connected load is at $\pm 5\%$. Unless stated otherwise, the values apply to an ambient temperature of 25°C

Product Code	Wattage	CCT	Voltage(AC)	Beam Angle	Finish	Control Mode
544199	35C-35W COB	27-2700K	A-220-240VAC	10 - 10°	SS-Stainless Steel	3161-ON/OFF
		30-3000K		25- 25°		2-DALI
		40-4000K		45 - 45°		3-0/1-10V
		60-6000K		60 - 60°		4-Phase cut
				AS-Asymmetric		5-DMX
Ex: Order Code: 54419935C27A10SS1						

Pluxb luminaires are developed with globally recognized and tested components suppliers, however as per international standards tolerance in initial flux and connected load is at $\pm 5\%$. Unless stated otherwise, the values apply to an ambient temperature of 25°C