

## SCUBA WHITE



### DESCRIPTION:

SCUBA WHITE horizontal bend series constructed using Silicon extrusion process. Uniform, dot free light emission, good appearance consistency. Anti-yellowing, high temperature and corrosion resistance, weak acid and alkali resistance UV proof for true outdoor applications. Easy installation with clips and bendable track. Cuttable for Flexible application. Control mode : ON/OFF, DALI, Phase Cut, 0/1-10V.

### TECHNICAL DETAILS:

Power : 4W/M  
Voltage : DC24V  
Efficiency : 70 LM/W  
CRI >90  
Length/Reel : 5M  
Cutting length: 50mm  
Led Qty : 168LEDs/M  
Working Temperature : -25~55°C  
Storage Temperature : -30~80°C  
Voltage Range : 23 ~25V dc  
Reverse Voltage : 25V dc  
Warranty : 5 years

### LUMENS PER METER:

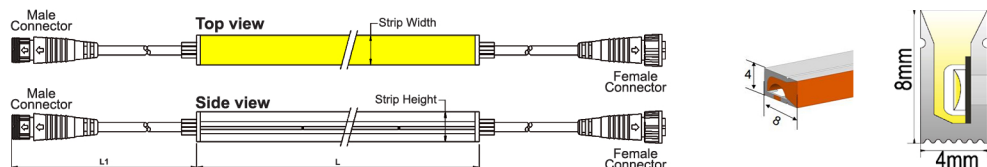
CCT	4W
2700K	266lm
3000K	280lm
4000K	294lm
5000K	295lm
5700K	297lm
6500K	303lm



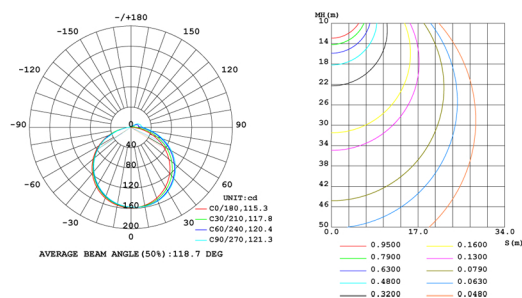
### INSTALLATION : Horizontal Bend

Product Code : 8700408

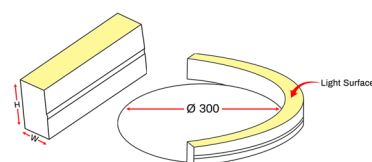
### DIMENSION:



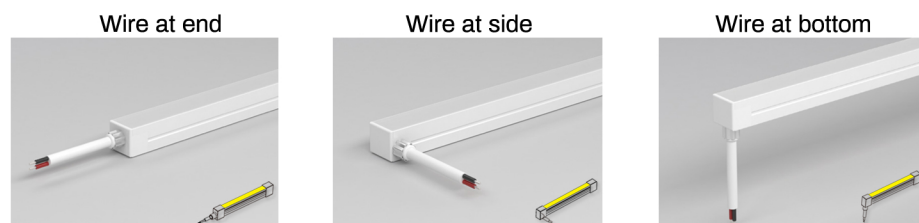
### LIGHT DISTRIBUTION:



### BENDING:



### End cap



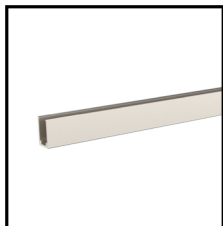
### Standards

EN 60598-1  
EN 60598-2-2  
EN 60598-3-2

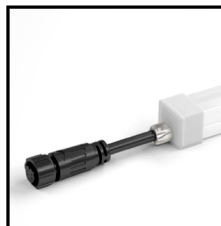
Order Code Ex : 8700408	4	27
Product Code 8700408	Power I 04-4W	CCT 27-2700K 30-3000K 40-4000K 50-5000K 57-5700K 65-6500K

Pluxb luminaires are developed with globally recognized and tested components suppliers, however as per international standards tolerance in initial flux and connected load is at  $\pm 5\%$ . Unless stated otherwise, the values apply to an ambient temperature of 25°C

## ACCESSORIES



Aluminium Profile  
Order Code: 8700408-01  
Dimension: L1000\*W5.4\*H9.2mm  
Material: aluminium  
Color: silver



End Cap 2PIN  
Order Code: 8700408-06  
Color: white  
Cable entry: front/side/bottom  
Picture: front



Curved Profile  
Order Code: 8700408-02  
Dimension: L1000\*W5\*H8.2mm  
Material: stainless steel  
Color: silver



Closed End Cap  
Order Code: 8700408-07  
Material: silicone  
Color: white



Mounting Clips  
Order Code: 8700408-03  
Dimension: L20\*W5.3\*H9.2mm  
Material: stainless steel  
Color: silver  
Each meter led strips needs  
2 clips + 2 screws



IP67 T Type Connector  
Order Code: 8700408-08  
Wire Gauge: 0.326mm<sup>2</sup>/22AWG  
Protection: IP67 (Mated)



IP67 Connector 2PIN  
Order Code: 8700408-04  
Wire gauge: 0.326mm<sup>2</sup>/22AWG  
Protection: IP67 (Mated)  
Connector type : Male

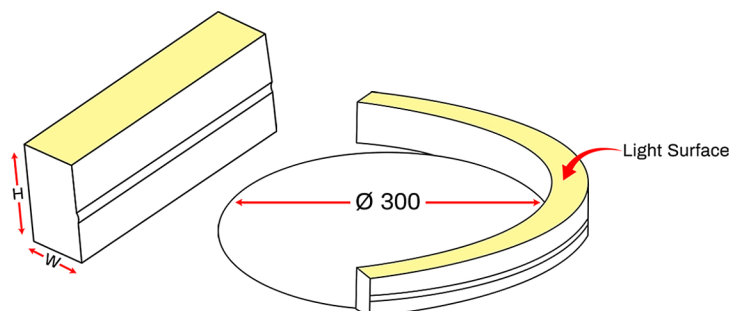


Scissor  
Order Code: 8700408-09

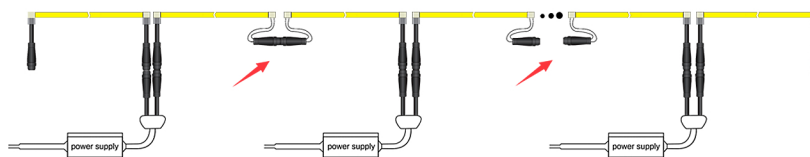


IP67 Connector 2PIN  
Order Code: 8700408-05  
Wire gauge: 0.326mm<sup>2</sup>/22AWG  
Protection: IP67 (Mated)  
Connector type : Female

## ADDITIONAL INFO.



- ▶ Please light it up for a quick check before installation.
- ▶ Bending diameter of SCUBA WHITE 0408 is 300mm, do not bend to Top direction, or bend too sharp or twist. If bend it wrongly, PCB inside will be damaged and the lighting fixture will not turn on.
- ▶ During installation, please make sure there are at least two workers to cooperate together and strictly follow the instruction manuals.
- ▶ Warranty: All LED light are warranted to be free from defects in product itself for 5 years from the date of purchase. This warranty does not cover failures due to abuse, misuse, improper handling, act of nature, negligence, normal wear, accidental damage, repairs made by the purchaser or incorrect voltage conditions.



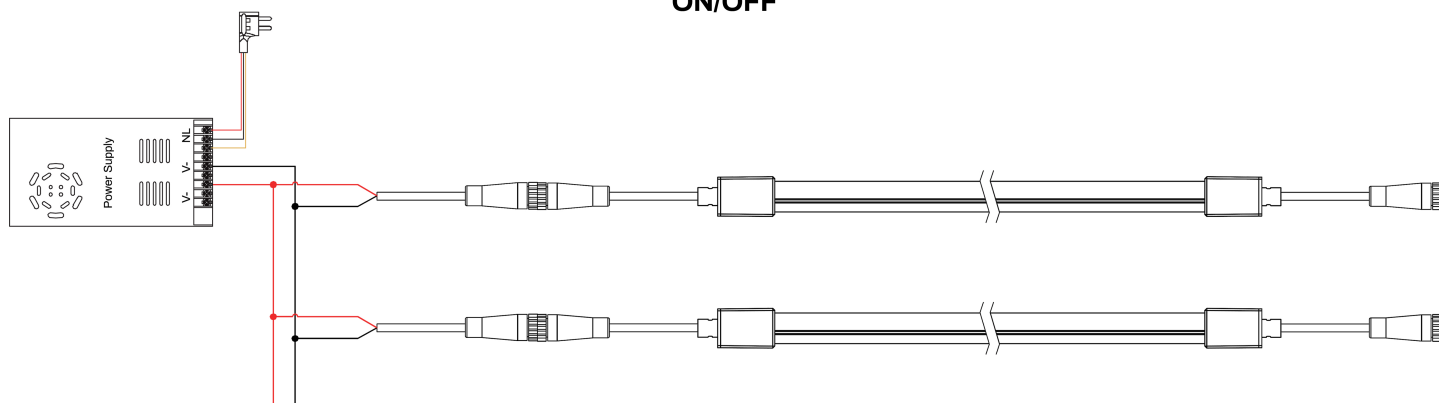
### Note:

-5W/M Max. 10mtr run length to single side feed.

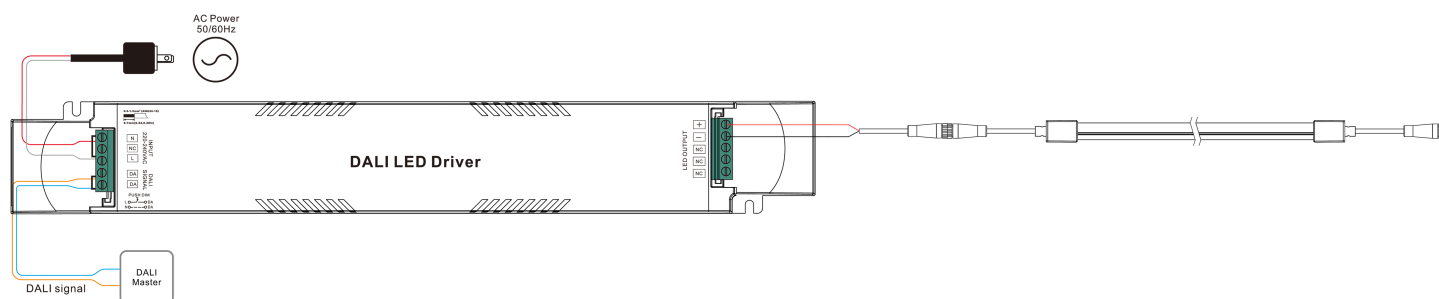
-The given data are typical values due to the tolerances of the production process and the electrical components, values for light output and electrical power can vary up to 5%.

# WIRING DIAGRAM

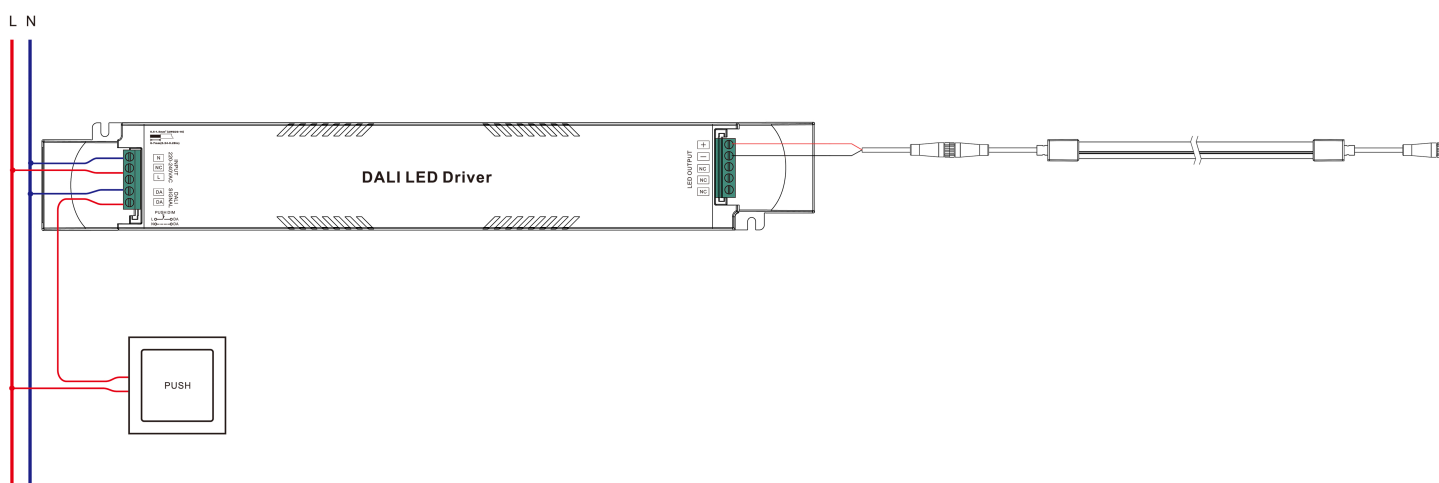
ON/OFF



## 1. DALI



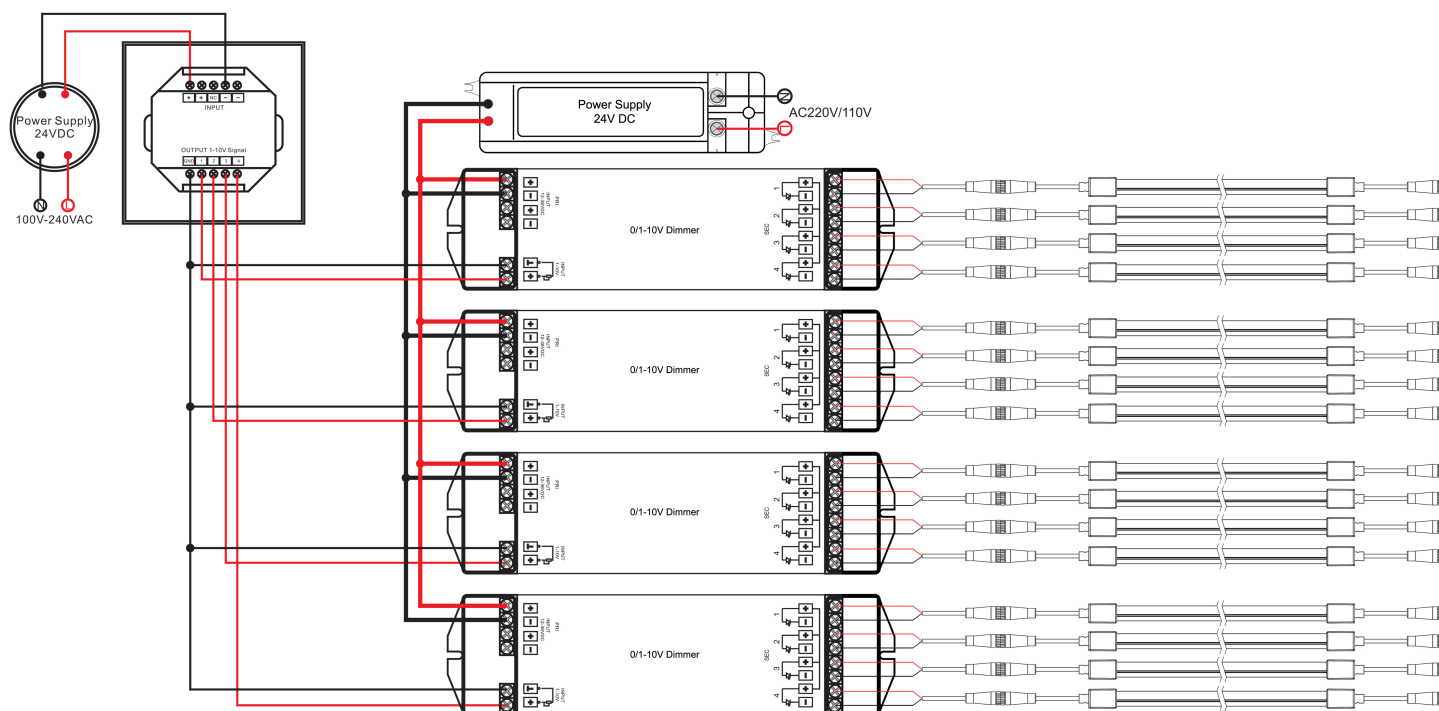
## 2. WITH PUSH DIM



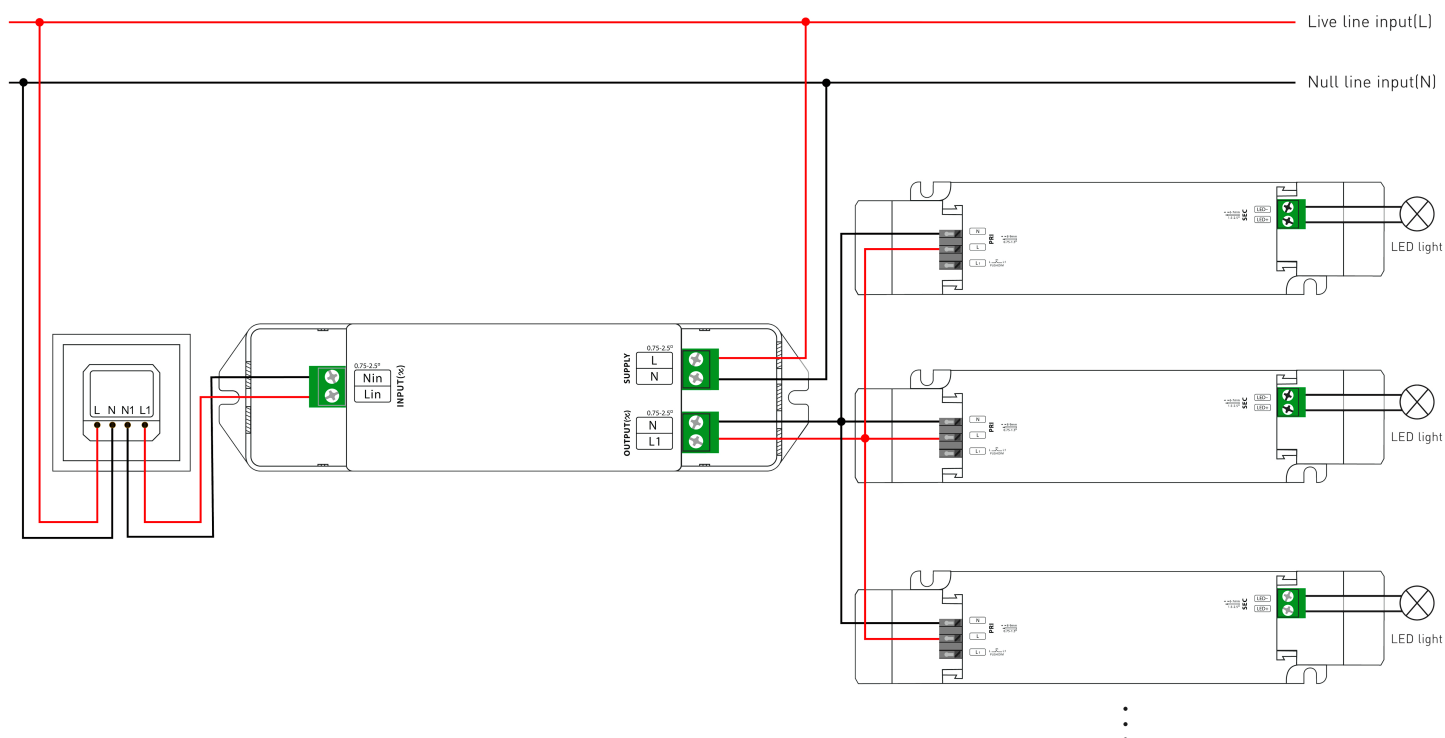


# WIRING DIAGRAM

## 0/1-10V



## PHASE CUT

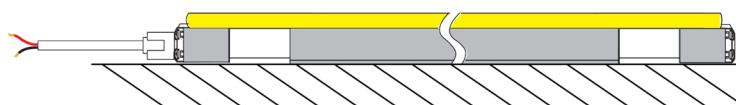
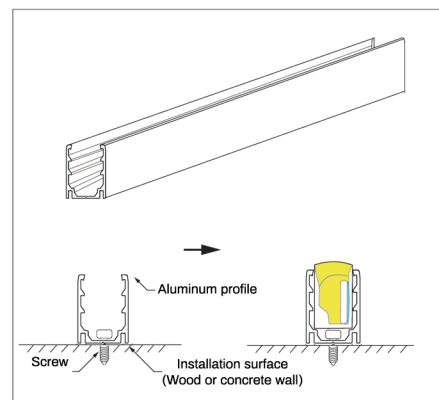


## GENERAL MOUNTING

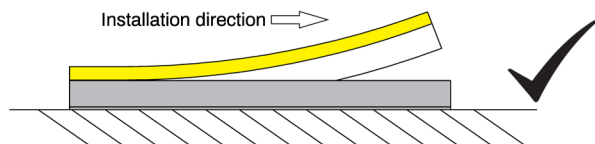
LED neon flex can be fastened to surfaces using appropriate accessories available from distributor. Please refer to data sheets or contact technical support for a copy. The use of glues and resins as fixing agents should be avoided. Use of glues and resins may invalidate the warranty of the product unless its use is agreed in writing by distributor as part of a detailed project specification.

The images indicate one type of fixing available in the accessories range. The different fixings serve obvious purposes, however when in doubt technical support should be contacted.

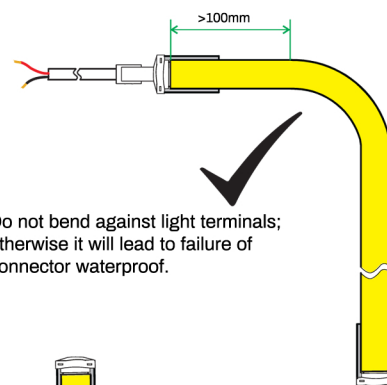
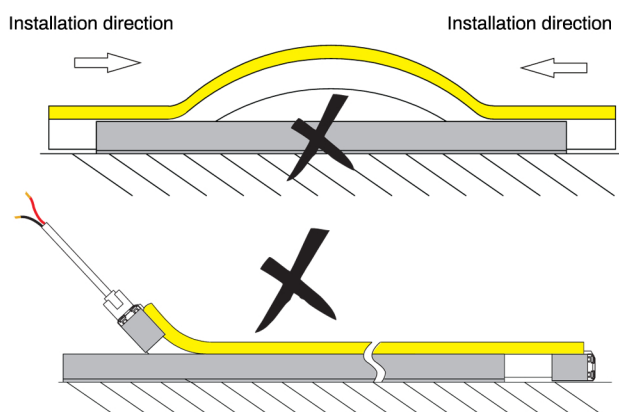
Quantities of accessories and fixings are dependent on the type and its effect on the variant it's being used with. Care should be taken to ensure drooping is avoided, and to ensure that is fastened adequately to avoid stresses on itself.



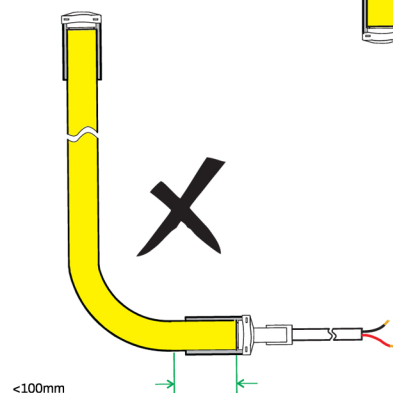
Press the flex light into mounted aluminum channel in one direction.



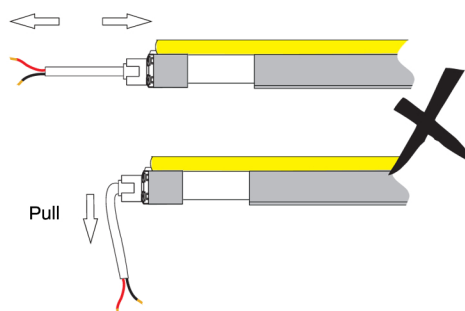
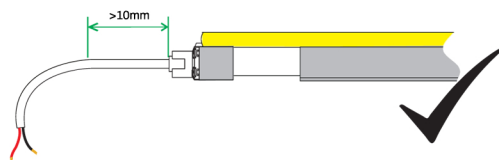
Incorrect installation like below picture could lead to light failure.



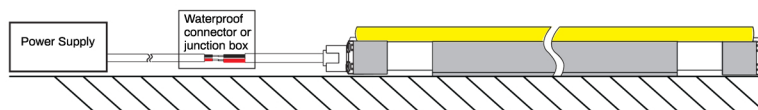
Do not bend against light terminals; otherwise it will lead to failure of connector waterproof.



Ensure the feeding cable not bear force, keep the head 10mm in natural loose.

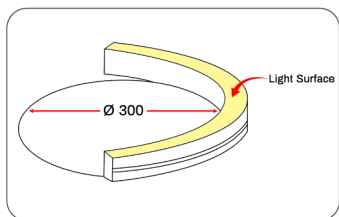


Mount the cable junction in hermetic enclosure like waterproof junction box in outdoor application.



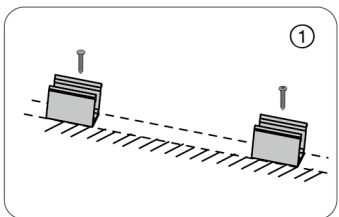
## INSTALL

### Attention



1. Correct bending way

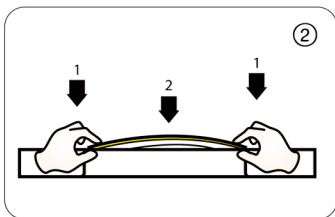
### Intallation



1. Installation of clip

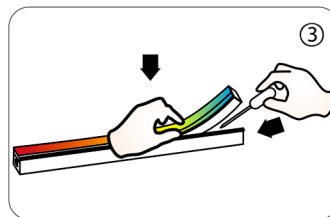
Fix the clips and aluminum profile via the screws

⚠ Suggestion: 2pcs clips per meter.



2. Installation of Neon

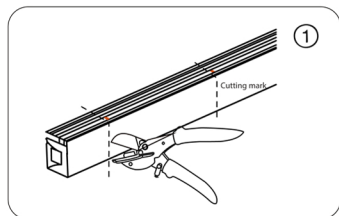
Simultaneously install the neon from both ends



3. Installation of Neon

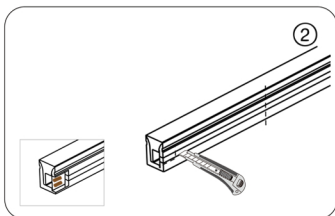
Should use tools to assist when remove the neon

### Cutting/Soldering/Intall end cap

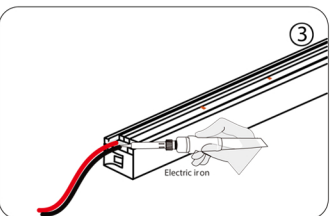


1. Cut the neon to be required length

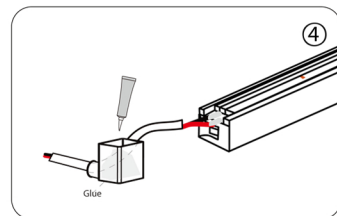
⚠ The minimum cutting unit is based on the cutting mark.



2. Cut the side of neon, expose the soldering pad

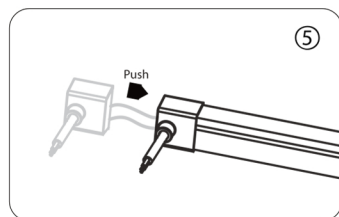


3. Solder the cable onto the PCB



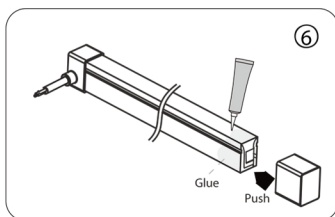
4. Put the wire into and inject glue into the end cap

⚠ The amount of glue is about 1/3-1/2 of end cap



5. Push the end cap to wrap end of neon

⚠ After the glue is injected, the neon needs to be laid flat for 2 hours to before other process.



6. Apply gel around the tail of neon and install the end cap

⚠ After the glue is injected, the neon needs to be laid flat for 2 hours to before project process. Glue will complete dry after 24 hours.

