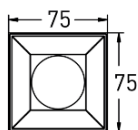
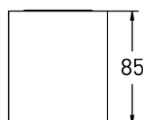
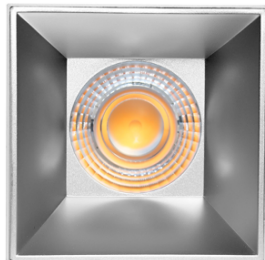


## SCOR



### Features:

SCOR surface mounted downlight, modern designed, and simple look.

High-quality die cast aluminum body, a durable, lightweight, and precise product, and anti-glare reflector and different options of optics lens with excellent light dispersion.

High thermal conductivity double-sided aluminum substrate, so it helps keep the light fixture cool.

The reflector enhances the light's intensity by reflecting more light onto the target area.

High light Transmissivity.

Homogenous, well-balanced, no shadow.

### Technical Specifications:

Input Voltage: 220-240 V AC, 50 Hz.

Wattage: 9-15W

High Lumen: 120lm/w

3 STEP Mac Adam

High efficiency, low flicker driver

Lamp Type: COB

Operating Temperature: -20°C to 45°C

Glow Wire Test 850° C

Warranty: 5 Years

Life Time: 50,000hrs at 25°C (L80/B10)

### Fields of Application:

Education

Galleries hotels

Living spaces

Conference rooms

Restaurants

### Installation Method:

Surface Mounted

Wattage(W)	:	9	12	15		
Finish	:	White(W)	Black(B)			
Kelvin*	:	2700K	3000K	4000K	5000K	5700K
Beam Angle	:	15°	24°	36°	55°	
CRI	:	90+	95+			
Driver	:	ON/OFF	0/1-10V	DALI	Phase Dimming	Bluetooth

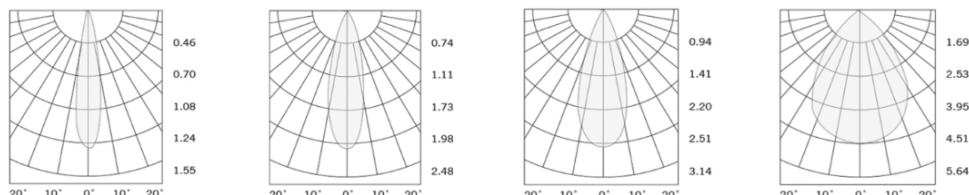
\*Special Color and Finish on request

### Product Code (97807615):

Wattage	Lumens(lm)	Dimension(LxWxH) mm
9	1080LM	75x75x85
12	1440LM	75x75x85
15	1800LM	75x75x85

\*Luminous lux value is calculated for 4000K CRI>90

### Photometric:



Pluxb luminaires are developed with globally recognized and tested components suppliers, however as per international standards tolerance in initial flux and connected load is at  $\pm 5\%$ . Unless stated otherwise, the values apply to an ambient temperature of 25°C

- Standards
- EN 60598-1
- EN 60598-2-2
- EN 60598-2-22
- EN 60598-3-2
- EN 60598-3-3

Order Code Ex: 97807615 27K 15D 9 1 W

CCT	Beam Angle	CRI	Driver	Finish
27K - 2700K	15D - 15°	9->90	1 - ON/OFF	W-White
30K - 3000K	24D - 24°	9->95	2 - 0/1-10V	B-Black
40K - 4000K	36D - 36°		3 - DALI	
50K - 5000K	55D - 55°		4 - Phase Dimming	
57K - 5700K			5 - Bluetooth	

Pluxb luminaires are developed with globally recognized and tested components suppliers, however as per international standards tolerance in initial flux and connected load is at ±5%. Unless stated otherwise, the values apply to an ambient temperature of 25°C