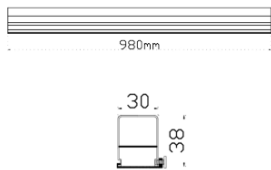
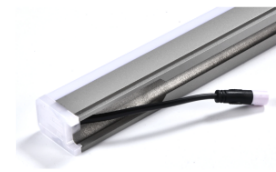
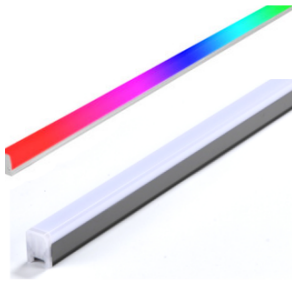


SAVY



Description:

SAVY Contour LED lighting for architecture outline is a direct view linear LED fixture ideally suited for creating long ribbons of colour and colour-changing effects.

Can change all kinds of colours And produce gradients, flicker, scanning, chasing, running water and other effects.

Monochromatic light can be selected with 1800~6500K , red light, blue light and green light. Length options: 250mm , 500mm , 750mm , 1mtr , 1.2mtr , can be customized on request.

The number of lenses within the system changes based on the selected length, ensuring optimal performance and functionality for each configuration.

LED linear cove lighting outdoor apply to façade lighting, Landscape lighting and architectural lighting.

Product Specifications:

Body Material : Aluminium Housing
 Diffuser : PMMA
 Gasket: Moulding shaped silicone seal
 Lens/Reflector : Optical lens (efficiency>90%)
 Power Cable: 0.5 mt. power cable included
 Driver : High efficiency, low flicker driver
 Installation Type: Surface Mounted
 Adjustable: No
 Warranty: 5 Years
 Life Time: 50,000hrs (L80/B10) at 35°C

Technical Specifications:

Wattage: 10 - 12W
 Voltage: DC24V
 Frequency: 50-60Hz
 Light Source: OSRAM/EPISTAR/CREE
 No. of pixel : 8 Pixel/M
 UCs512 IC for DMX
 Lumen: 100lm/W
 Mac Adam: 3 Step
 Safety Class: III
 Working Temperature:-20°C to 55°C

Parameter:

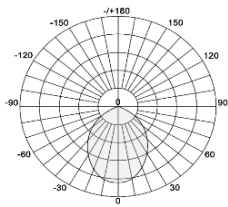
Wattage(W)	:	10W / 12W
Finish	:	Grey (G) / Customized (C)
Kelvin*	:	1800K~6500K / 2700K / 3000K / 4000K / 6000K / R / G / B / RGB / RGBW
Beam Angle	:	180°
CRI	:	80
Control Mode	:	ON/OFF / DALI / 0 / 1-10V / Phase Cut / DMX / SPI

Order Code:

Product Code	Wattage	CCT	Voltage(DC)	Beam Angle	Finish	Control Mode
5543038	10-10W	27-2700K	D-24VDC	180-180°	G-Grey	1-ON/OFF
		30-3000K			C-Customize	2-DALI
	40-4000K				3-0/1-10V	
	60-6000K				4-Phase Cut	
	92-RGB				5-DMX	
	93-RGB DMX				6-SPI (TTL)	
		82-RGBW				
		83-RGBW DMX				
		18-65-18K-65K				

Ex: Order Code: 55430381027D180G1

Photometric:



Standards:

- EN 60598-1
- EN 60598-2-2
- EN 60598-3-2
- EN 60598-3-3

Pluxb luminaires are developed with globally recognized and tested components suppliers, however as per international standards tolerance in initial flux and connected load is at ±5%. Unless stated otherwise, the values apply to an ambient temperature of 25°C