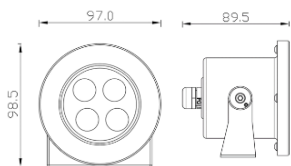
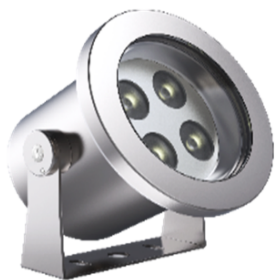


## SALIVA



### Description:

SALIVA is IP68 light, highly durable and versatile lighting devices with an Ingress Protection (IP) rating of 68. This rating signifies complete protection against dust and allows the lights to be submerged in water beyond 1 meter.

It comes with different CCT and RGB LED sources and various beam angles this family is a perfect solution to the requirement.

Ideal for challenging environments, IP68 lights are resilient, making them suitable for outdoor, marine, and demanding applications, ensuring reliable performance in harsh conditions.

### Product Specifications:

Housing : Stainless steel 316 SUS  
Front cover : Stainless steel 316 SUS  
Glass : Clear glass  
Gasket: Molding shaped silicone seal  
Lens/Reflector : Optical lens (efficiency>90%)  
Power Cable: 0.5 mt. power cable included  
Driver : High efficiency, low flicker driver  
Installation Type: Surface Mounted  
Adjustable: Yes

### Technical Specifications:

Wattage: 8 - 12W  
Voltage: DC24V  
Frequency: 50-60Hz  
Light Source: OSRAM/EPISTAR/CREE  
Lumen: 100lm/W  
Mac Adam: 3 Step  
Safety Class: III  
Working Temperature:-20°C to 55°C  
Life Time: 50,000hrs (L80/B10) at 35°C  
Warranty: 5 Years

### Parameter:

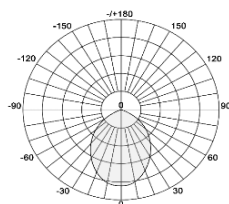
Wattage(W)	:	8W / 12W
Finish	:	Stainless Steel 316 SUS (SS)
Kelvin*	:	2700K/ 3000K/ 4000K/ 6000K /RGB / RGBW
Beam Angle	:	5° / 8° / 15° / 25° / 40° / 60°
CRI	:	80
Control Mode	:	ON/OFF /DALI / 0 / 1-10V / Phase Cut / DMX

### Order Code:

Product Code	Wattage	CCT	Voltage(DC)	Beam Angle	Finish	Control Mode
552098	08-8W(4X2W)	27-2700K	D-24VDC	5-5°	SS-Stainless Steel 316	1-ON/OFF
	12-12W(4X3W)	30-3000K		8-8°		2-DALI
		40-4000K		15-15°		3-0/1-10V
		60-6000K		25-25°		4-Phase Cut
		92-RGB		40-40°		5-DMX
		93-RGB DMX		60-60°		
		82-RGBW				
		83-RGBW DMX				

**Ex: Order Code:** 5520980827D'5SS1

### Photometric:



### Standards :

EN 60598-1

EN 60598-2-2

EN 60598-3-2

EN 60598-3-3

Pluxb luminaires are developed with globally recognized and tested components suppliers, however as per international standards tolerance in initial flux and connected load is at  $\pm 5\%$ . Unless stated otherwise, the values apply to an ambient temperature of 25°C