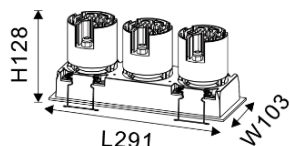
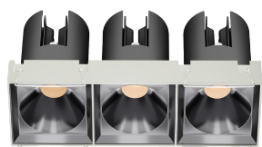


ROME IV



Features:

ROME IV Recessed Adjustable modern design, die cast aluminum body with solvent free power coating, with High Efficiency PMMA Lens and Deep Anti-Glare Reflector with an option of die cast aluminum reflector.

Aluminum Body helps in dissipating heat effectively, reducing the risk of overheating and extending the lifespan of the light with PMMA lens, With different finish reflector White/Black+ irony grey+ Matt White/Matt Black/Shiny black/Shiny silver reflector and any another special finish as your request.

Product has Ultra compact design and ensures UGR<13.

High thermal conductivity double-sided aluminum substrate.

High light Transmissivity.

Homogenous, well-balanced light dispersing, no shadow.

Technical Specifications:

Input Voltage: 220- 240 V AC, 50/60Hz.

Wattage: 60-90W

High Lumen: 105lm/w

2 STEP Mac Adam

High efficiency, low flicker driver

Lamp Type: COB

Operating Temperature: -20°C to 45°C

Glow Wire Test 850° C

Warranty: 5 Years

Lifetime 50,000hrs at a 25°C(L90/B10)

Fields of Application:

Retail

Education

Galleries hotels

Living spaces

Museums

Restaurants

Painting Exhibitions

Theaters


Installation Method:

Recessed Adjustable

Wattage(W)	:	3x20	3x30				
Finish	:	White(W)	Black(B)				
Kelvin*	:	2700K	3000K	3500K	4000K	5000K	5700K
Beam Angle	:	24°	30°	40°	55°		
CRI	:	90+					
Driver	:	ON/OFF	DALI	Phase Dimming			

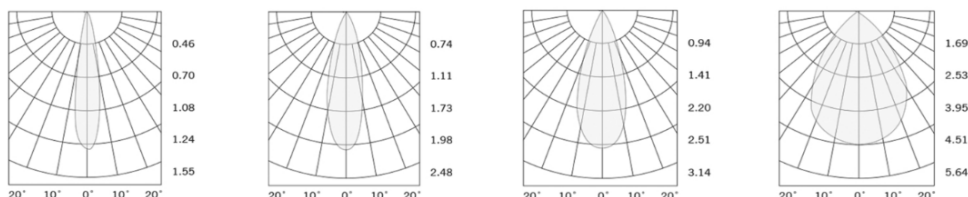
*Special Color and Finish on request

Product Code (96809590.60):

Wattage	Lumens(lm)	Dimension (LxWxH) mm	Cut Out  (mm)
60	6300LM	291x103x128	287x95
90	9450LM	291x103x128	287x95

*Luminous lux value is calculated for 4000K CRI>90

Photometric:



Pluxb luminaires are developed with globally recognized and tested components suppliers, however as per international standards tolerance in initial flux and connected load is at $\pm 5\%$. Unless stated otherwise, the values apply to an ambient temperature of 25°C

- Standards
- EN 60598-1
- EN 60598-2-2
- EN 60598-2-22
- EN 60598-3-2
- EN 60598-3-3

Order Code Ex: ~~96809590.60~~ 27K 24D 9 1 W

CCT	Beam Angle	CRI	Driver	Finish
27K - 2700K	24D - 24°	9->90	1 - ON/OFF	W-White
30K - 3000K	30D - 30°		2 - DALI	B-Black
35K - 3500K	40D - 40°		3 - Phase Dimming	
40K - 4000K	55D - 55°			
50K - 5000K				
57K - 5700K				

Pluxb luminaires are developed with globally recognized and tested components suppliers, however as per international standards tolerance in initial flux and connected load is at ±5%. Unless stated otherwise, the values apply to an ambient temperature of 25°C