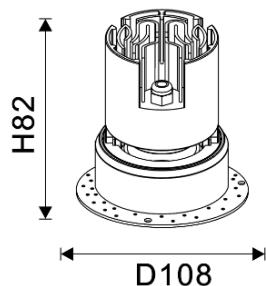
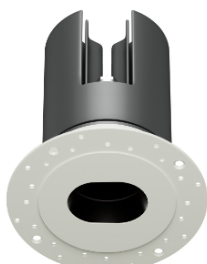
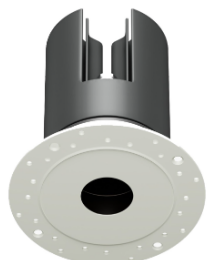


ROME III



Features:

ROME III Recessed Adjustable modern design, die cast aluminum body with solvent free power coating, with High Efficiency PMMA Lens.

The product available with Deep Anti-Glare, Pinhole, and Oval Reflector with an option of die cast aluminum reflector.

Aluminum Body helps in dissipating heat effectively, reducing the risk of overheating and extending the lifespan of the light with PMMA lens, With different finish reflector White/Black+ irony grey+ Matt White/Matt Black/Shiny black/Shiny silver reflector and any another special finish as your request.

Product has Ultra compact design and ensures UGR<13.

High thermal conductivity double-sided aluminum substrate.

High light Transmissivity.

Homogenous, well-balanced light dispersing, no shadow.

Technical Specifications:

Input Voltage: 220- 240 V AC, 50/60Hz.

Wattage: 10-15W

High Lumen: 105lm/w

2 STEP Mac Adam

High efficiency, low flicker driver

Lamp Type: COB

Operating Temperature: -20°C to 45°C

Glow Wire Test 850° C

Warranty: 5 Years

Lifetime 50,000hrs at a 25°C(L90/B10)

Fields of Application:

Retail

Education

Galleries hotels

Living spaces

Museums

Restaurants

Painting Exhibitions

Theaters

Installation Method:

Recessed Adjustable

Wattage(W)	:	10	12	15			
Finish	:	White(W)	Black(B)				
Kelvin*	:	2700K	3000K	3500K	4000K	5000K	5700K
Beam Angle	:	12°	18°	24°	36°	40°	50°
CRI	:	90+					
Driver	:	ON/OFF	DALI	Phase Dimming			
Reflector Type	:	Deep Anti-Glare (D)	Pinhole(PH)	Oval(O)			

*Special Color and Finish on request

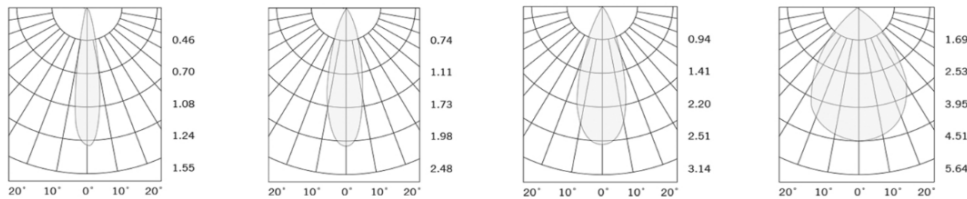
Product Code (96807515.20):

Wattage	Lumens(lm)	Dimension (ØxH) mm	Cut Out (mm)
10	1050LM	108x82	75
12	1260LM	108x82	75
15	1575LM	108x82	75

*Luminous lux value is calculated for 4000K CRI>90

Pluxb luminaires are developed with globally recognized and tested components suppliers, however as per international standards tolerance in initial flux and connected load is at ±5%. Unless stated otherwise, the values apply to an ambient temperature of 25°C

Photometric:



Standards

- EN 60598-1
- EN 60598-2-2
- EN 60598-2-22
- EN 60598-3-2
- EN 60598-3-3

Order Code Ex: 96807515.20 27K 12D 9 1 W D

CCT	Beam Angle	CRI	Driver	Finish	Type
27K -	12D - 12°	9- >90	1 - ON/OFF	W-	Deep Anti-Glare
2700K	18D - 18°		2 - DALI	White	(D)
30K -	24D - 24°		3 - Phase	B-Black	Pinhole(PH)
3000K	36D - 36°		Dimming		Ovel(O)
35K -	40D - 40°				
3500K	50D - 50°				
40K -					
4000K					
50K -					
5000K					
57K -					
5700K					

Pluxb luminaires are developed with globally recognized and tested components suppliers, however as per international standards tolerance in initial flux and connected load is at ±5%. Unless stated otherwise, the values apply to an ambient temperature of 25°C