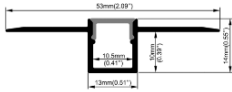
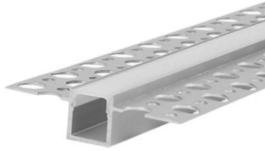


## ROLE 53



### Features:

ROLE 53 High Quality Trimless Extruded Aluminum using the highest standard 6063-T6 aluminum stronger than 6063-T5, and deep anodizing (more than 12µm) of profile protects the aluminum against corrosion, extends durability.

Lighting fixtures can be connected into linear and polygonal lighting lines.

Lens Options: PMMA Matt Diffuser / Micro Prismatic Lens / Prism Lens + Optics Diffusion sheet, all diffusers and lens are UV stabilized, no inclusions or scratches on the surface.

Standard Length: 570 mm / 1120 mm / 1480 mm / 1750 mm /2100mm

Other lengths can be customized as per design.

### Technical Specifications:

Input Voltage : 220- 240 V AC, 50 Hz.

Wattage : 15-40W/M

Luminaire Efficacy : 130lm/W

3 STEP Mac Adam

High efficiency, low flicker driver

Lamp Type : Linear Rigid Module

Operating Temperature: -20°C to 45°C

Glow Wire Test 850° C

Warranty : 5 Years

Life Time : 50,000hrs at ta 25°C

(L80/B10)

### Fields of Application:

Retail

Education

Galleries hotels

Living spaces

### Installation Method:

Recessed Trimless.

Wattage(W)/M :	15	25	35	40		
Finish :	White(W)	Black(B)	Silver(S)	Customized(C)		
Kelvin* :	3000K	4000K	5000K	5700K	6500K	Tunable
Beam Angle :	120°					
CRI :	80+	90+				
Driver :	ON/OFF	0/1-10V	DALI	Bluetooth		

\*Special Color and Finish on request

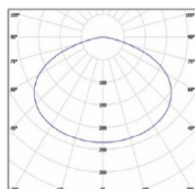
### Product Code (984531040):

Wattage/M	Lumens(LM)	Dimension(W x H) mm	Length(L) mm
15	1950LM	53x10	990
25	3250LM	53x10	1200
35	4550LM	53x10	1480
40	5200LM	53x10	1970

\*Luminous flux value is calculated for 4000K and CRI>80.

\*Above mentioned wattages can be customized according to designed requirement.

### Photometric:



Pluxb luminaires are developed with globally recognized and tested components suppliers, however as per international standards tolerance in initial flux and connected load is at ±5%. Unless stated otherwise, the values apply to an ambient temperature of 25°C

## Standards

EN 60598-1

EN 60598-2-2

EN 60598-2-22

EN 60598-3-2

EN 60598-3-3

Order Code Ex: 984531040 30K 120D 8 1 W

CCT	Beam Angle	CRI	Driver	Finish
30K - 3000K	120D - 120°	8->80	1 - ON/OFF	W-White
40K - 4000K		9->90	2 - 0/1-10V	B-Black
50K - 5000K			3 - DALI	S-Silver
57K - 5700K			4 - Bluetooth	C-Customized
65K - 6500K				
TuK - Tunable				

Pluxb luminaires are developed with globally recognized and tested components suppliers, however as per international standards tolerance in initial flux and connected load is at  $\pm 5\%$ . Unless stated otherwise, the values apply to an ambient temperature of 25°C