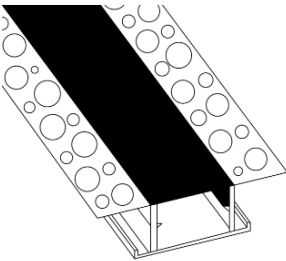
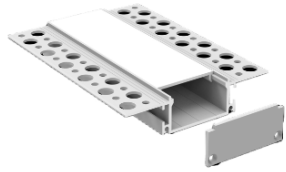


ROLE 35



Features:

ROLE 35 Linear Extruded Aluminum Profile with highest standard 6063-T6 aluminum, deep anodizing (more than 12µm) that protects against corrosion and extends durability, Matt surface treatment.

Opal PC Diffuser / Micro Prismatic Lens / Prism Lens + Optics Diffusion sheet, all diffusers and lens are UV stabilized, no inclusions or scratches on the surface.

Continues Seamless diffuser up to 30mm length.

Standard Length with Zagher Linear Modules 1000 mm / 1200 mm/ 2000 mm/ 3000mm, 4000mm, 5000mm tailored length can be manufactured as per design.

Homogenous, well-balanced light dispersing with no shadow.

Technical Specifications:

Input Voltage: 220- 240 V AC, 50 Hz.

Wattage /M: 10-25W

Efficacy: 130lm/w

3 STEP Mac Adam

High Efficiency, Low Flicker Driver

Lamp Type: Linear SMD VS Rigid Module

Operating Temperature: -20°C to 45°C

Glow Wire Test 850° C

Warranty: 5 Years

Life Time: 50,000hrs at ta 25°C (L90/B10)

Fields of Application:

Retail

Education

Galleries hotels

Living spaces

Installation Method:

Surface Mounted / Suspended.

Wattage(W) :	10	15	20	25		
Finish :	White(W)	Black(B)	Silver(S)	Customized		
Kelvin* :	2700K	3000K	4000K	5000K	5700K	Tunable
Beam Angle :	120°					
CRI :	80+	90+	Tunable			
Driver :	ON/OFF	0/1-10V	DALI	Phase Dimming	Bluetooth	

*Special Color and Finish on request

Product Code (984353525):

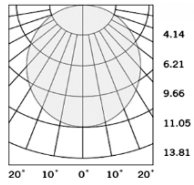
Wattage	Lumens(lm)	Dimension(W XH) mm	Dimension (L) mm
10	1300LM	35x35	1000
15	1950LM	35x35	1500
20	2600LM	35x35	2000
25	3250LM	35x35	3500

*Luminous flux value is calculated for 4000K CRI>80

* Length and Wattage can be customized as per design

Pluxb luminaires are developed with globally recognized and tested components suppliers, however as per international standards tolerance in initial flux and connected load is at ±5%. Unless stated otherwise, the values apply to an ambient temperature of 25°C

Photometric:



Standards

EN 60598-1

EN 60598-2-2

EN 60598-3-2

EN 60598-3-3

Order Code Ex: 984353525 27K 120D 8 1 W

CCT	Beam Angle	CRI	Driver	Finish
27K - 2700K	120D - 120°	8->80	1 - ON/OFF	W-White
30K - 3000K		9->90	2 - 0/1-10V	B-Black
40K - 4000K		T->Tunable	3 - DALI	S-Silver
50K - 5000K			4 - Phase Dimming	C-Customized
57K - 5700K			5 - Bluetooth	
TuK - Tunable				

Pluxb luminaires are developed with globally recognized and tested components suppliers, however as per international standards tolerance in initial flux and connected load is at $\pm 5\%$. Unless stated otherwise, the values apply to an ambient temperature of 25°C