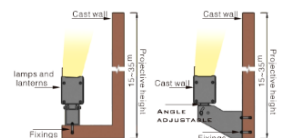
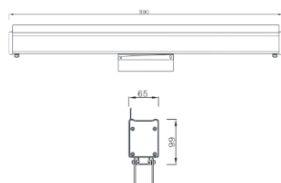
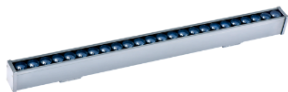


## ROCKET



### Description:

ROCKET is a Linear outdoor lighting fixtures designed to be installed flush with the ground surface, providing subtle and aesthetically pleasing illumination.

These lights typically have a linear or elongated shape, allowing them to seamlessly blend into pathways, driveways, or other outdoor areas. Linear inground lights often feature durable and weather-resistant materials to withstand outdoor conditions.

Toughened glass surface, with high hardness, not easy to break. It comes with different CCT and C5 Marine Grade Coating, this family is a perfect solution to the requirement.

Control Mode : DMX and RDM

The length can be customized 250mm, 500mm, 750mm, 1.5mtr. They are commonly used for accentuating architectural features, guiding pathways, or creating ambiance in outdoor spaces.

### Product Specifications:

Housing : Die cast Aluminum

Glass : Tempered glass

No. of LEDs : 24 LEDs

Gasket: Molding shaped silicone seal

Accessory: Side cover

Lens/Reflector : Optical lens (efficiency>90%)

Power Cable: 0.5 mt. power cable included

Driver : High efficiency, low flicker driver

Installation Type: Surface Mounted

### Technical Specifications:

Wattage: 120W

Voltage: DC24V

Frequency: 50-60Hz

Light Source: OSRAM/EPISTAR/CREE

Lumen: 50lm/W

Mac Adam: 3 Step

Safety Class: III

Working Temperature:-25°C to 60°C

Life Time: 50,000hrs (L80/B10) at 35°C

Humidity : <95%

Warranty: 5 Years

### Parameter:

Wattage(W) : 120W

Finish : Black (B) / Grey (G)

Kelvin\* : RGBW / RGBW DMX

Beam Angle : 10°/ 15°/ 30°/ 45°/ 60°/ 20°\* 45°/ 15°\*60°

CRI : 80+

Control Mode : ON/OFF / DALI / DMX

### Order Code:

Product Code	Wattage	CCT	Voltage	Beam Angle	Finish	Control Mode
5496599	120-120W	82-RGBW	D-24VDC	15-15°	B-Black	1-ON/OFF
		83-RGBW DMX			G-Grey	2-DALI
						3-DMX

549659912082D'15B

Ex: Order Code: 1

### Standards :

EN 60598-1

EN 60598-2-2

EN 60598-3-2

EN 60598-3-3