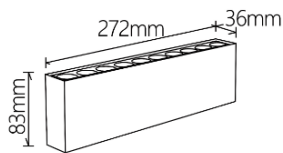
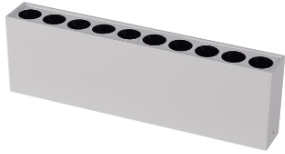


## NOVA



### Features:

NOVA Is Surface Mounted linear downlight, means the fixture has a long, narrow form, providing a sleek, continuous line of light. This design is ideal for applications where a modern aesthetic is desired.

Die cast CNC aluminum body, is resistant to corrosion and physical impacts, that it has excellent thermal conductivity, which helps in dissipating heat generated by the light source. Product has Ultra compact design and ensures UGR<16.

### Technical Specifications:

Input Voltage: 220- 240 V AC, 50 Hz.  
 Wattage: 24W  
 High Lumen: 95lm/w  
 3 STEP Mac Adam  
 High efficiency, low flicker driver  
 Lamp Type: COB  
 Operating Temperature: -20°C to 45°C  
 Glow Wire Test 850° C  
 Warranty: 5 Years  
 Life Time: 50,000hrs at ta 25°C  
 (L80/B10)

### Fields of Application:

Retail  
 Education  
 Galleries hotels  
 Living spaces

### Installation Method:

Surface Mounted.

Wattage(W)	:	24			
Finish	:	White(W)	Black(B)		
Kelvin*	:	2700K	3000K	4000K	5000K
Beam Angle	:	15°	24°	38°	
CRI	:	90+			
Driver	:	ON/OFF	0/1-10V	DALI	Phase Dimming Bluetooth

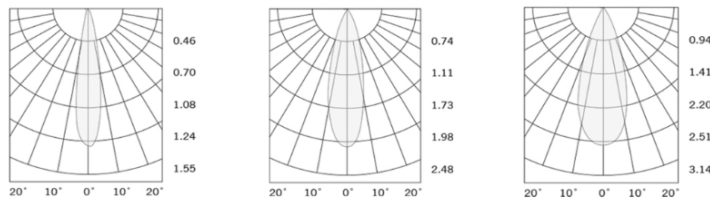
\*Special Color and Finish on request

### Product Code (96827224):

Wattage	Lumens(lm)	Dimension(LxWxH) mm
24	2280LM	272x36x83

\*Luminous lux value is calculated for 4000K CRI>80

### Photometric:



### Standards

- EN 60598-1
- EN 60598-2-2
- EN 60598-2-22
- EN 60598-3-2
- EN 60598-3-3

Order Code Ex: 96827224 27K 15D 9 1 W

CCT	Beam Angle	CRI	Driver	Finish
27K - 2700K	15D - 15°	9->90	1 - ON/OFF	W-White
30K - 3000K	24D - 24°		2 - 0/1-10V	B-Black
40K - 4000K	38D - 38°		3 - DALI	
50K - 5000K			4 - Phase Dimming	
			5 - Bluetooth	

Pluxb luminaires are developed with globally recognized and tested components suppliers, however as per international standards tolerance in initial flux and connected load is at ±5%. Unless stated otherwise, the values apply to an ambient temperature of 25°C