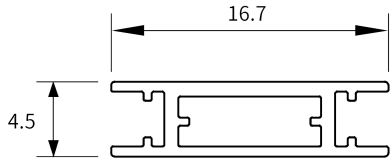
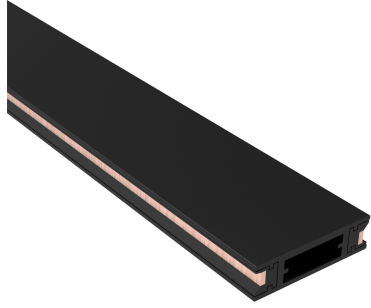


Magnetic Track Rail



Feature :

The magnetic track system, precise and let you have the choice of creating your ideal lighting systems that suits your interior designs and needs.

Snap in place and connect automatically by magnets.

System with low voltage DC 40V input voltage.

It is available in two length 1000mm and 2000mm track rail, with Recessed Trim and Recessed Trimless and Surface Mounted, and Original Black/White / Silver finish.

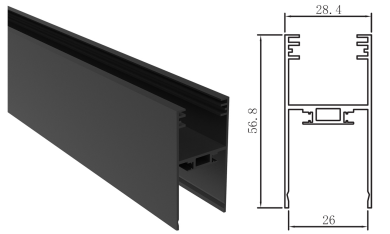
Fields Of Applcation:

- | | |
|------------------|------------------|
| Retail | Conference rooms |
| Education | Counters |
| Galleries hotels | Restaurants |
| Healthcare | Living space |

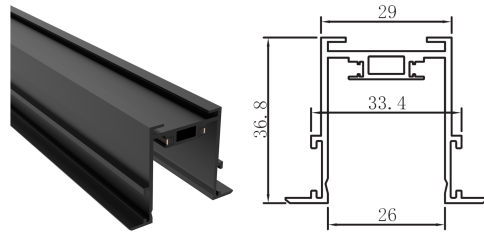
Installation Method:

- Recessed Trim / Recessed Trimless / Surface Mounted.

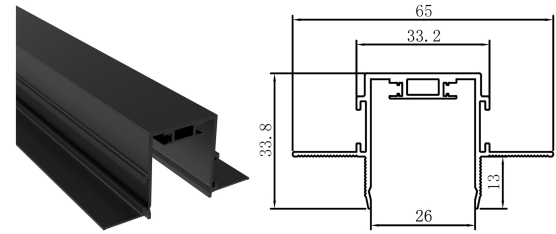
Type Of Rail :



Surface Mounted Track Rail
7652000

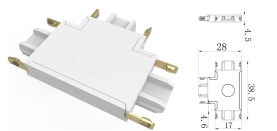


Recessed Trim Track Rail
765-05

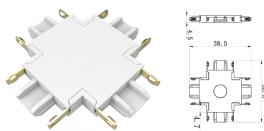


Recessed TrimLess Track Rail
765-03

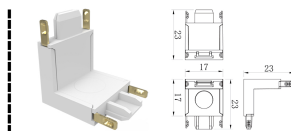
Track Components :



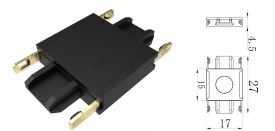
765-15



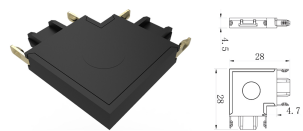
765-16



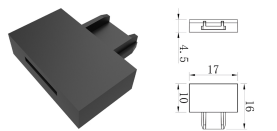
765-14



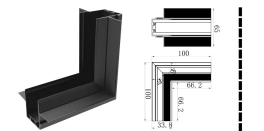
765-13



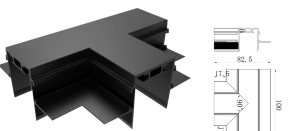
765-18



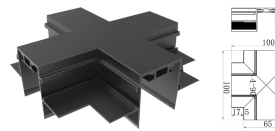
765-19



765-20



765-21



765-22



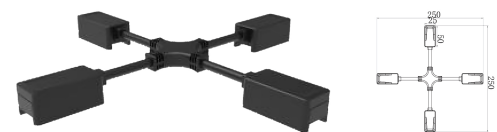
765-23



765-02



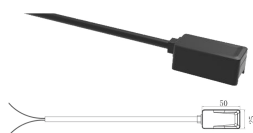
765-24



765-25



765-11

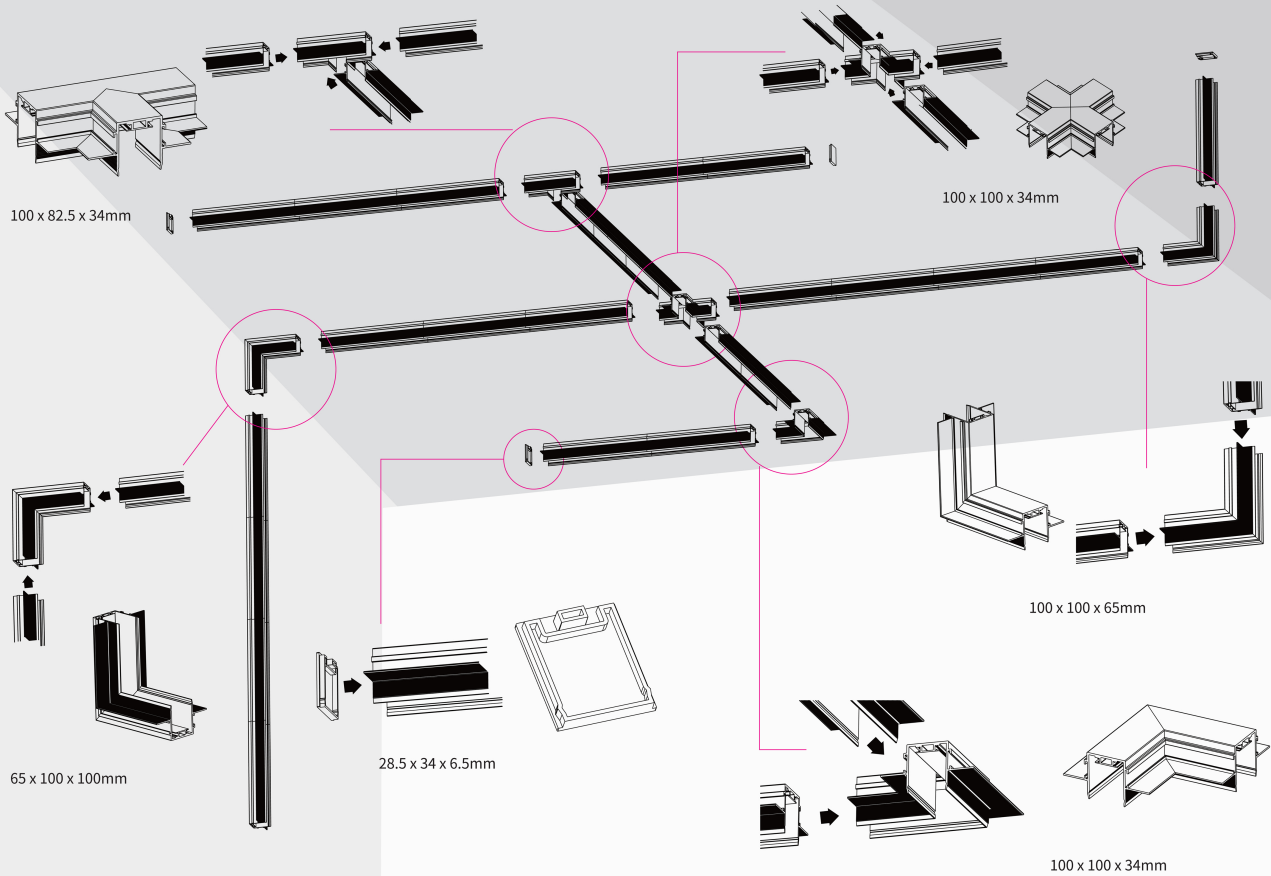
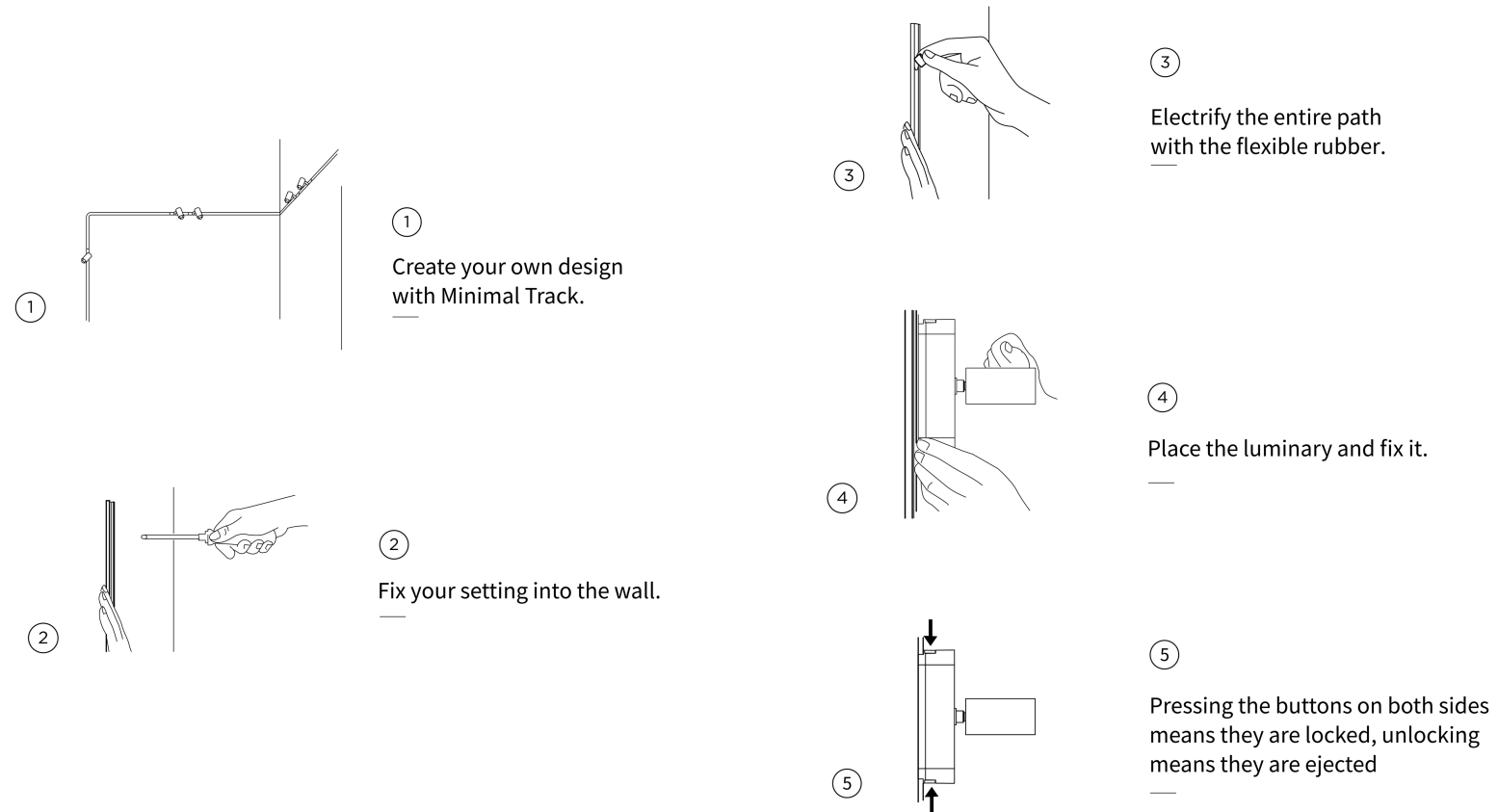


765-10

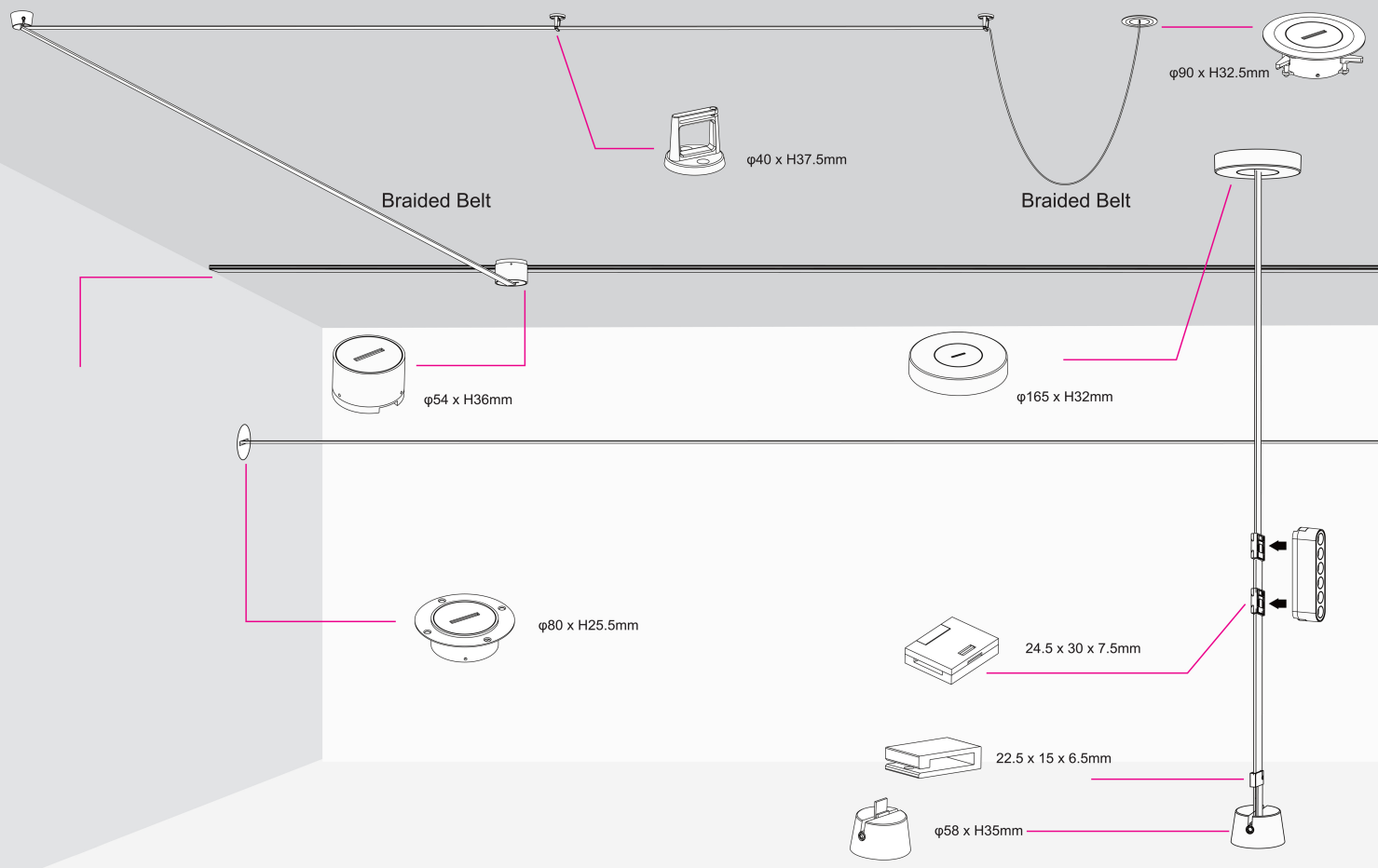
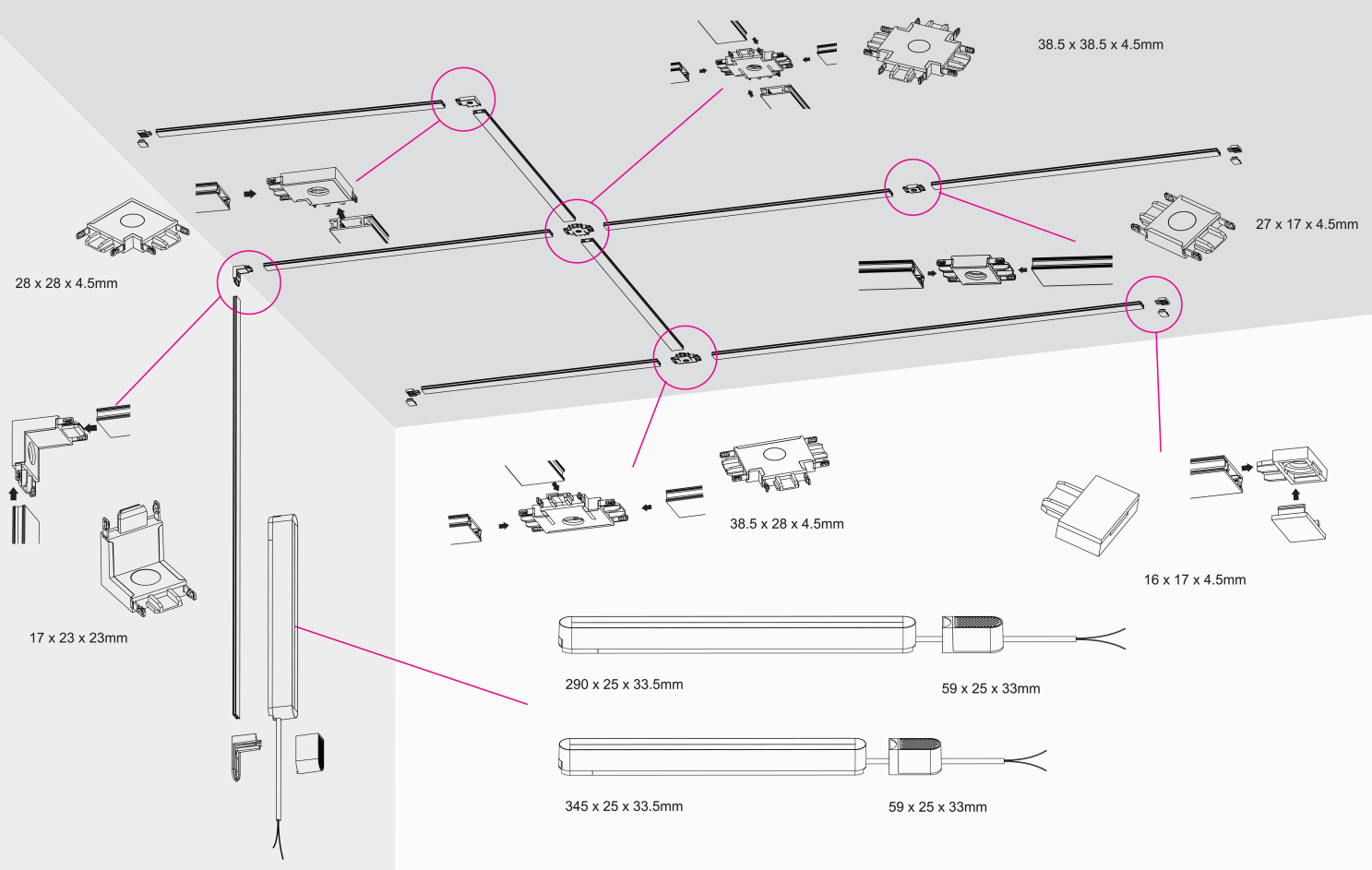


765-12

Ultrathin Track Installation



Pluxb luminaires are developed with globally recognized and tested components suppliers, however as per international standards tolerance in initial flux and connected load is at $\pm 5\%$. Unless stated otherwise, the values apply to an ambient temperature of 25°C



Pluxb luminaires are developed with globally recognized and tested components suppliers, however as per international standards tolerance in initial flux and connected load is at $\pm 5\%$. Unless stated otherwise, the values apply to an ambient temperature of 25°C