

## LUMINO



### Description:

LUMINO is a linear wall washer delivers glare-free illumination using a 6063 high-density extruded aluminum alloy body and optical-grade PMMA optics for superior light performance and durability.

Its advanced baffle system ensures uniform wall-washing while producing bold vertical illumination with minimal glare.

It comes in Metallic Gray (RAL9023) with high-gloss liquid coating and high-temperature grilling. A 50µm liquid coating enhances heat dissipation and lifespan, while a 120µm RAL7011 metallic grey powder coating provides robust UV protection.

Available with different CCT options and C5 Marine Grade Coating, this family is a perfect solution to a wide range of project requirements.

Lengths can be customized to 250mm, 500mm, 750mm, and 1.5m.

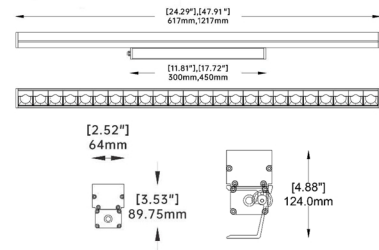
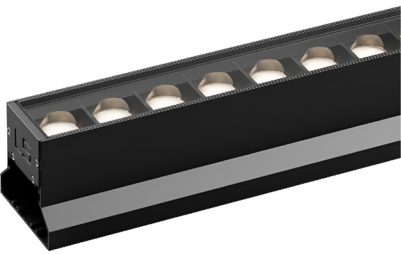
These fixtures are commonly used for accentuating architectural features, guiding pathways, or creating ambiance in outdoor spaces.

### Product Specifications:

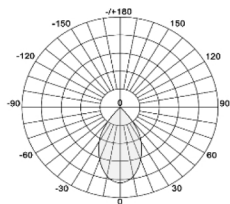
- Housing : 6063 Aluminum Alloy
- Glass : Tempered glass
- Coating : Powder Coating / Liquid Coating
- Gasket: Molding shaped silicone seal
- Lens/Reflector : Optical lens (efficiency>90%)
- Power Cable: 0.5 mt. power cable included
- Driver : High efficiency, low flicker driver
- Installation Type: Surface Mounted
- Adjustable : Yes

### Technical Specifications:

- Wattage: 18 - 36W
- Voltage: 100-277VAC
- Frequency: 50-60Hz
- Light Source: OSRAM / LumiLeds / CREE
- Lumen: 75lm/W
- Mac Adam: 3 Step
- Safety Class: III
- Working Temperature:-30°C to 35°C
- Life Time: 50,000hrs (L80/B10) at 25°C
- Humidity : <95%
- Warranty: 5 Years



### Photometric :



### Standards :

- EN 60598-1
- EN 60598-2-2
- EN 60598-3-2
- EN 60598-3-3

### Parameter:

Wattage(W)	:	18W / 36W
Finish	:	RAL 9001 (W) / RAL 9006 (G) / RAL 7011 (B) / RAL 9023 (DG)
Kelvin*	:	2700K / 3000K / 3500K / 4000K / 5000K / 6500K / RGB / RGBW
Beam Angle	:	30°
CRI	:	90+
Control Mode	:	ON/OFF / DALI / 0/1-10V / DMX

Text Here...

### Order Code:

Product Code	Wattage	CCT	Voltage(AC)	Beam Angle	Finish	Control Mode
5426424	18 - 18W (617mm)	27 - 2700K	A - 100-277VAC	30-30°	W - RAL 9001	1-ON/OFF
	36 - 36W (1217mm)	30 - 3000K			G - RAL 9006	2- DALI
		35 - 3500K			B - RAL 7011	3-0/1-10V
		40 - 4000K			DG - RAL 9023	4-DMX
		50 - 5000K				

Pluxb luminaires are developed with globally recognized and tested components suppliers, however as per international standards tolerance in initial flux and connected load is at ±5%. Unless stated otherwise, the values apply to an ambient temperature of 25°C

65-6500K

82-RGB

83-RGB DMX

92-RGBW

93-RGBW DMX

**Ex: Order Code:** 54264241827A'30W1

Pluxb luminaires are developed with globally recognized and tested components suppliers, however as per international standards tolerance in initial flux and connected load is at  $\pm 5\%$ . Unless stated otherwise, the values apply to an ambient temperature of 25°C