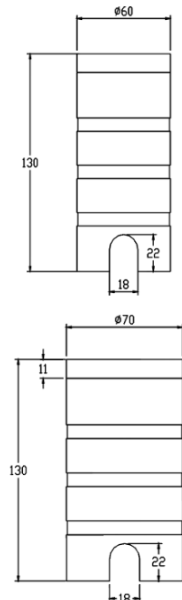


LUMEX



Description:

LUMEX is a Trimless underground light typically feature durable, weather-resistant housings suitable for outdoor use. Excellent heat dissipation.

It include features such as corrosion resistance , dustproof, anodized and polished, sand blasted, not easy to rust and fade.

Toughened glass surface, with 6mm thickness, not easy to break.

It comes with different CCT and various beam angles this family is a perfect solution to the requirement.

It has very wide application like For landscape lighting, garden lighting, horticultural engineering design, public fountain square Lighting.

Product Specifications:

Housing : Die cast aluminum

Coating: Powder Coating

Glass : Tempered glass

Gasket: Molding shaped silicone seal

Lens/Reflector : Optical lens (efficiency>90%)

Power Cable: 0.5 mt. power cable included

Driver : High efficiency, low flicker driver

Installation Type: Inground

Technical Specifications:

Wattage: 7W

Voltage: DC24V

Frequency: 50-60Hz

Light Source: OSRAM/EPISTAR/CREE

Lumen: 100lm/W

Mac Adam: 3 Step

Safety Class: III

Working Temperature:-40°C to 50°C

Life Time: 50,000hrs (L80/B10) at 35°C

Warranty: 5 Years

Parameter:

Wattage(W)	:	7W
Finish	:	Grey (G) / Black (B)
Kelvin*	:	2200K / 2700K / 3000K / 4000K / 6000K
Beam Angle	:	30°x125°
CRI	:	80
Control Mode	:	ON/OFF / DALI / 0 / 1-10V / Phase Cut

Standard:

EN 60598-1

EN 60598-2-2

EN 60598-3-2

EN 60598-3-3

Order Code:

Product Code	Wattage	CCT	Voltage(DC)	Beam Angle	Finish	Control Mode
544070	7 - 7W	22-2200K	D-24VDC	30x10 - 30°x125°	G-Grey	1-ON/OFF
		27-2700K			B-Black	2-DALI
		30-3000K				3-0/1-10V
		40-4000K				4-Phase cut
		60-6000K				

Ex: Order Code: 5440707 22D'30x10G1