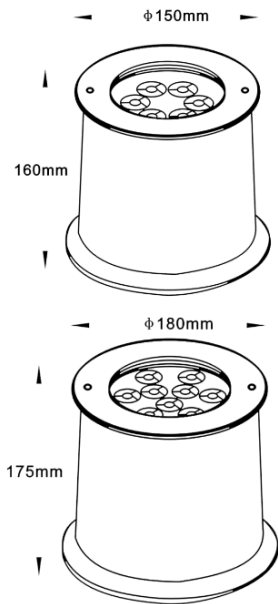
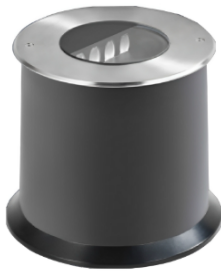


LUME



Description:

LUME is an inground high-quality aluminum alloy die-casting lamp body, featuring a surface outdoor powder electrostatic spraying finish.

The cover, made from SUS304 or 316 stainless steel die-casting, makes it ideal for outdoor harsh environments. The entire lamp structure is waterproof with advanced technology, offering a reliable IP67 protection grade.

Engineered with a built-in anti-glare cover, this light delivers exceptional glare control with 0 glare for superior visual comfort. It provides a wall washer effect, enhancing architectural aesthetics with smooth and even illumination. The ultra-clear tempered glass and imported material lens are designed to minimize light efficiency loss.

Additionally, it incorporates inductive lightning electrostatic (ESD) protection, compliant with the LEVEL 4 standard, ensuring robust protection against electrical surges.

Product Specifications:

Front cover : Stainless Steel 316
 Housing : Die cast aluminum grey
 Coating: Powder Coating
 Glass : Tempered glass
 Gasket: Molding shaped silicone seal
 Lens/Reflector : Optical lens (efficiency>90%)
 Power Cable: 0.5 mt. power cable included
 Driver : High efficiency, low flicker driver
 Installation Type: Inground

Technical Specifications:

Wattage: 12 - 20W
 Voltage: DC24V / 170-265V AC
 Frequency: 50-60Hz
 Light Source: OSRAM/EPISTAR/CREE
 Lumen: 100lm/W
 Mac Adam: 3 Step
 Safety Class: III
 Working Temperature:-40°C to 50°C
 Life Time: 50,000hrs (L80/B10) at 35°C
 Warranty: 5 Years

Parameter:

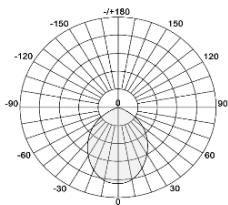
Wattage(W)	:	12W / 20W
Finish	:	Grey (G) / Black (B)
Kelvin*	:	2200K/2700K/ 3000K / 4000K / 6000K
Beam Angle	:	30°x125°
CRI	:	80
Control Mode	:	ON/OFF / DALI / 0 / 1-10V / Phase Cut

Order Code:

Product Code	Wattage	CCT	Voltage(DC)	Beam Angle	Finish	Control Mode
544181	12 - 12W	22-2200K	D-24VDC	30x125 - 30°x125°	G-Grey	1-ON/OFF
		27-2700K				2-DALI
	30-3000K	3-0/1-10V				
	40-4000K	4-Phase cut				
	60-6000K					

Ex: Order Code: 5441811222D'30x125G1

Photometric :



Standard:

- EN 60598-1
- EN 60598-2-2
- EN 60598-3-2
- EN 60598-3-3

Pluxb luminaires are developed with globally recognized and tested components suppliers, however as per international standards tolerance in initial flux and connected load is at ±5%. Unless stated otherwise, the values apply to an ambient temperature of 25°C

Product Code	Wattage	CCT	Voltage(AC)	Beam Angle	Finish	Control Mode
544181	12 - 12W	22-2200K	A-170-265VAC	30x125 - 30°x125°	G-Grey	1-ON/OFF
	20 - 20W	27-2700K			B-Black	2-DALI
		30-3000K				3-0/1-10V
		40-4000K				
		60-6000K				

Ex: Order Code: 5441811222A'30x125G1

Pluxb luminaires are developed with globally recognized and tested components suppliers, however as per international standards tolerance in initial flux and connected load is at $\pm 5\%$. Unless stated otherwise, the values apply to an ambient temperature of 25°C