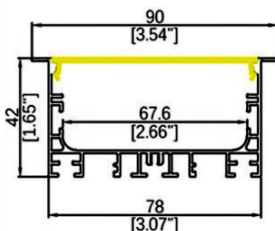
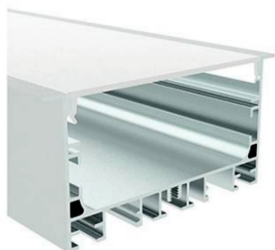
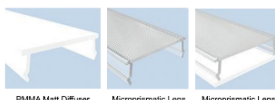


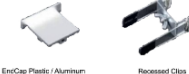
LINE 78



- Optics Diffuser :



- Accessories :



Features:

LINE 78 Linear Extruded Aluminum Profile with highest standard 6063-T6 aluminum, deep anodizing (more than 12µm) that protects against corrosion and extends durability, Matt surface treatment.

Opal PC Diffuser / Micro Prismatic Lens / Prism Lens + Optics Diffusion sheet, all diffusers and lens are UV stabilized, no inclusions or scratches on the surface.

Continues Seamless diffuser upto 30mm length.

Standard Length with Zagha Linear Modules 570 mm / 1200 mm/ 1480 mm/ 1920 mm, tailored length can be manufactured as per design.

Homogenous, well-balanced light dispersing with no shadow.

Technical Specifications:

Input Voltage: 220- 240 V AC, 50 Hz.

Wattage/M: 25-65W

Efficacy: 130lm/w

Material: 6063 T6 Aluminum + PMMA

3 STEP Mac Adam

High Efficiency, Low Flicker Driver

Lamp Type: Linear SMD Rigid Module

Light Source: 17.6MM Led Strip / PCB Board

Operating Temperature: -20°C to 45°C

Glow Wire Test 850° C

Warranty: 5 Years

Life Time: 50,000hrs at ta 25°C

(L80/B10)

Fields of Application:

Retail

Education

Galleries hotels

Living spaces

Installation Method:

Recessed Trim.

Wattage(W)	:	25	40	55	65		
Finish	:	White(W)	Black(B)	Sliver(S)	Customized		
Kelvin*	:	2700K	3000K	4000K	5000K	5700K	Tunable
Beam Angle	:	120°					
CRI	:	80+	90+				
Driver	:	ON/OFF	0/1-10V	DALI	Phase Dimming	Bluetooth	

*Special Color and Finish on request

Product Code (974784295):

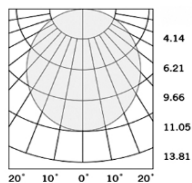
Wattage	Lumens(lm)	Dimension(W XH) mm	Dimension (L) mm
25	3250LM	78x42	990
40	5200LM	78x42	1200
55	7150LM	78x42	1480
65	8450LM	78x42	1970

*Luminous flux value is calculated for 4000K CRI>80

* Length and Wattage can be customized as per design

Pluxb luminaires are developed with globally recognized and tested components suppliers, however as per international standards tolerance in initial flux and connected load is at ±5%. Unless stated otherwise, the values apply to an ambient temperature of 25°C

Photometric:



Standards

EN 60598-1

EN 60598-2-2

EN 60598-2-22

EN 60598-3-2

EN 60598-3-3

Order Code Ex: 974784295 27K 120D 8 1 W

CCT	Beam Angle	CRI	Driver	Finish
27K - 2700K	120D - 120°	8->80	1 - ON/OFF	W-White
30K - 3000K		9->90	2 - 0/1-10V	B-Black
40K - 4000K			3 - DALI	S-Silver
50K - 5000K			4 - Phase Dimming	C-Customized
57K - 5700K			5 - Bluetooth	
TuK - Tunable				

Pluxb luminaires are developed with globally recognized and tested components suppliers, however as per international standards tolerance in initial flux and connected load is at $\pm 5\%$. Unless stated otherwise, the values apply to an ambient temperature of 25°C