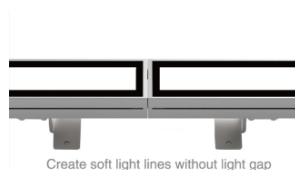
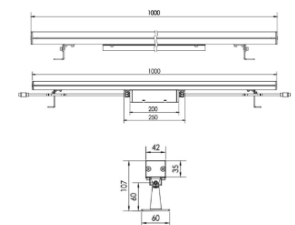


LEO



Create soft light lines without light gap

Description:

LEO series of high-power LED wall washers combines sophisticated design with advanced thermal management, thereby ensuring fixture stability and prolonged operational lifespan. The fixture's housing is precision-molded from premium 6063 aluminum alloy and finished with an anodized coating, providing exceptional durability and corrosion resistance. Available in Metallic Gray (RAL9023) with a high-gloss liquid coating and high-temperature grilling, the fixture also offers a 50µm liquid coating to enhance heat dissipation and lifespan, or a 120µm RAL7011 metallic grey powder coating for robust UV protection. With THD less than 10% and a power factor greater than 0.9, it ensures high electrical efficiency and superior performance. The toughened glass surface offers high hardness and impact resistance, and the series provides various CCT options, C5 Marine Grade Coating, Honeycomb, and Anti-glare shield options, making it a versatile solution for diverse project specifications. Customizable lengths include 250mm, 500mm, 750mm, and 1.5m. These fixtures are ideally suited for accentuating architectural elements, illuminating pathways, and enhancing the ambiance of outdoor environments.

Product Specifications:

Housing : Die cast Aluminum
Glass : Tempered glass
Coating : Powder Coating / Liquid Coating.
Gasket: Molding shaped silicone seal
Lens/Reflector : Optical lens (efficiency>90%)
Power Cable: 0.5 mt. power cable included
Driver : High efficiency, low flicker driver
Installation Type: Surface Mounted
Adjustable : Yes

Technical Specifications:

Wattage: 48W
Voltage: 24VDC
Frequency: 50-60Hz
Power Factor : >0.9
Light Source: OSRAM/EPISTAR/CREE
Lumen: 50lm/W
Mac Adam: 3 Step
Safety Class: III
Working Temperature:-25°C to 50°C
Life Time: 50,000hrs (L80/B10) at 25°C
Humidity : <95%
Warranty: 5 Years

Standards :

EN 60598-1
EN 60598-2-2
EN 60598-3-2
EN 60598-3-3

Parameter:

Wattage(W)	:	48W
Finish	:	Black (B) / White (W)
Kelvin*	:	RGBWCLA
Beam Angle	:	30° / 45° / 60° / 30x60°
CRI	:	80+
Control Mode	:	ON/OFF / DALI / DMX

Order Code:

Product Code	Wattage	CCT	Voltage	Beam Angle	Finish	Control Mode
5424208	48-48W (1000mm)	97 - RGBWCLA	D - 24VDC	30-30°	B-Black	1-ON/OFF
				45-45°	W-White	2-DALI
				60-60°		3-DMX

Pluxb luminaires are developed with globally recognized and tested components suppliers, however as per international standards tolerance in initial flux and connected load is at ±5%. Unless stated otherwise, the values apply to an ambient temperature of 25°C

30x60 - 30x60°

Ex: Order Code: 54242084897D'30B1

Pluxb luminaires are developed with globally recognized and tested components suppliers, however as per international standards tolerance in initial flux and connected load is at $\pm 5\%$. Unless stated otherwise, the values apply to an ambient temperature of 25°C