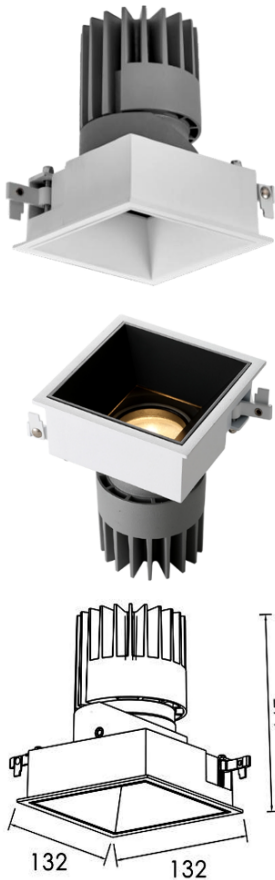


## JOYA



### Features:

JOYA Trim and deep adjustable design, die cast aluminum body with optics Lens.  
 Product has good design with the low glare and aluminum reflector and can be tiltable up to 30°.  
 Different colors of reflector are available Matt Black, Matt White, Gloss Black, Matt Gold, Dark Chrome, Chrome, and accessories of lens HoneyComb / Spread Lens/ Solite Lens.  
 The product has customized IP20 / IP44 / IP65, it will be as required.  
 Thermally engineered heatsink creates highly efficient passive cooling system.  
 Product has Ultra compact design and ensures UGR<18.  
 Homogenous, well-balanced light dispersing, no shadow.

### Technical Specifications:

Input Voltage: 220- 240V AC, 50/60Hz.  
 Wattage: 35W  
 High Lumen: 100lm/w  
 3 STEP Mac Adam  
 High efficiency, low flicker driver  
 Light source: Citizen CLU02Q-1202  
 Lamp Type: COB  
 Operating Temperature: -20°C to 45°C  
 Glow Wire Test 850° C  
 Warranty: 5 Years  
 Life Time: 50,000hrs at ta 25°C  
 (L90/B20)

### Fields of Application:

Retail  
 Education  
 Galleries hotels  
 Living spaces

### Installation Method:

Recessed Adjustable

Wattage(W)	:	35				
Finish	:	White(W)	Black(B)	Gray(G)		
Kelvin*	:	2700K	3000K	4000K	5000K	5700K
Beam Angle	:	15°	24°	36°	60°	
CRI	:	90+				
Driver	:	ON/OFF	0/1-10V	DALI	Phase Dimming	Bluetooth

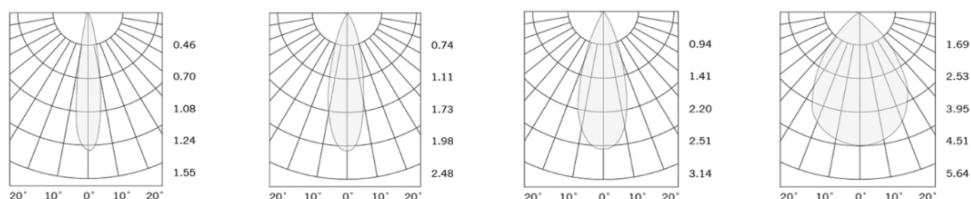
\*Special Color and Finish on request

### Product Code (96813235.60):

Wattage	Lumens(lm)	Dimension(LxWxH) mm	Cut Out (mm)
35	3500LM	132x132x145	125x125

\*Luminous Lux value is calculated for 4000K CRI>90

### Photometric:



Pluxb luminaires are developed with globally recognized and tested components suppliers, however as per international standards tolerance in initial flux and connected load is at ±5%. Unless stated otherwise, the values apply to an ambient temperature of 25°C

## Standards

EN 60598-1

EN 60598-2-2

EN 60598-2-22

EN 60598-3-2

EN 60598-3-3

Order Code Ex: 96813235.60 27K 15D 9 1 W

CCT	Beam Angle	CRI	Driver	Finish
27K - 2700K	15D - 15°	9->90	1 - ON/OFF	W-White
30K - 3000K	24D - 24°		2 - 0/1-10V	B-Black
40K - 4000K	36D - 36°		3 - DALI	G-Gray
50K - 5000K	60D - 60°		4 - Phase Dimming	
57K - 5700K			5 - Bluetooth	

Pluxb luminaires are developed with globally recognized and tested components suppliers, however as per international standards tolerance in initial flux and connected load is at  $\pm 5\%$ . Unless stated otherwise, the values apply to an ambient temperature of 25°C