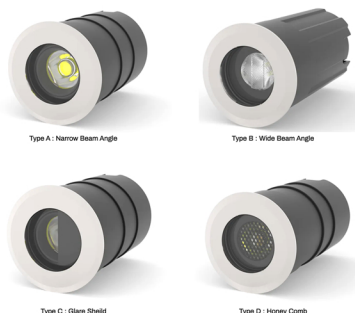
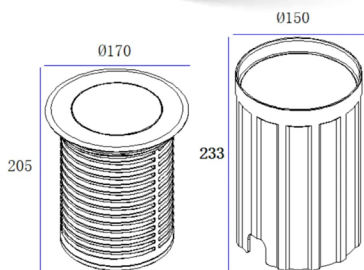
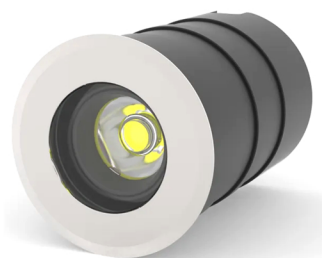


## HALVES



### Description:

HALVES is a Compact trim inground luminaire constructed from high-quality 6063-T5 aluminum with a SUS316 stainless steel cover ring for superior corrosion resistance and durability.

Features a surface screwless design for a clean, modern appearance. The luminaire is equipped with toughened clear glass, optionally available with half black-printed glass or honeycomb louver for enhanced anti-glare performance.

Built-in optical lens offers a range of beam angles from narrow to wide, ensuring precise light distribution for various outdoor applications. Ideal for underground installation in squares, gardens, pathways, and architectural landscapes.

### Product Specifications:

Front cover : Stainless Steel 316 L  
Housing : Die cast aluminum  
Coating: Powder Coating  
Glass : Toughened glass  
Gasket: Molding shaped silicone seal  
Lens/Reflector : Optical lens (efficiency>90%)  
Power Cable: 0.5 mt. power cable included  
Driver : High efficiency, low flicker driver  
Installation Type: Inground  
Adjustable: No

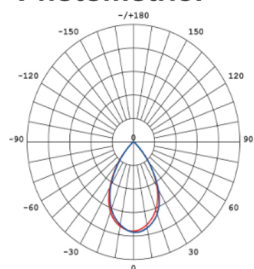
### Technical Specifications:

Wattage: 28W  
Voltage: 220-240VAC  
Frequency: 50-60Hz  
Light Source: OSRAM/EPISTAR/CREE  
Lumen: 95lm/W  
Mac Adam: 3 Step  
Safety Class: I  
Cut out : Ø152xH233mm  
Working Temperature:-20°C to 50°C  
Life Time: 50,000hrs (L80/B10) at 25°C  
Warranty: 5 Years

### Parameter:

Wattage(W)	:	28W
Finish	:	Stainless Steel (SS)
Kelvin*	:	2700K / 3000K / 4000K / 6000K
Beam Angle	:	15° / 24° / 36° / 50°
CRI	:	80+
Control Mode	:	ON/OFF / 0/1-10V / DALI
Type	:	Type A / Type B / Type C / Type D

### Photometric:



### Standard:

EN 60598-1  
EN 60598-2-2  
EN 60598-3-2  
EN 60598-3-3

### Order Code:

Product Code	Wattage	CCT	Voltage(AC)	Beam Angle	Finish	Control Mode
544174	28 - 28W	27-2700K	A - 220 - 240VAC	15-15°	SS - Stainless Steel	1-ON/OFF
		30-3000K		24-24°		2-0/1-10V
		40-4000K		36-36°		3-DALI
		60-6000K		50-50°		

Ex: Order Code: 5441742827A15SS1

Pluxb luminaires are developed with globally recognized and tested components suppliers, however as per international standards tolerance in initial flux and connected load is at ±5%. Unless stated otherwise, the values apply to an ambient temperature of 25°C