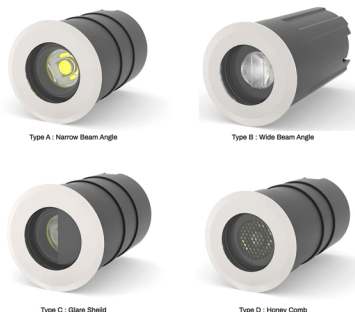
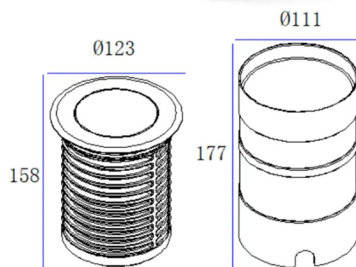
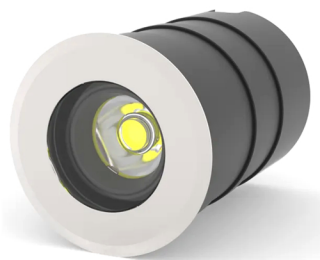


HALVES



Description:

HALVES is a Compact trim inground luminaire constructed from high-quality 6063-T5 aluminum with a SUS316 stainless steel cover ring for superior corrosion resistance and durability.

Features a surface screwless design for a clean, modern appearance. The luminaire is equipped with toughened clear glass, optionally available with half black-printed glass or honeycomb louver for enhanced anti-glare performance.

Built-in optical lens offers a range of beam angles from narrow to wide, ensuring precise light distribution for various outdoor applications. Ideal for underground installation in squares, gardens, pathways, and architectural landscapes.

Product Specifications:

Front cover : Stainless Steel 316 L
Housing : Die cast aluminum
Coating: Powder Coating
Glass : Toughened glass
Gasket: Molding shaped silicone seal
Lens/Reflector : Optical lens (efficiency>90%)
Power Cable: 0.5 mt. power cable included
Driver : High efficiency, low flicker driver
Installation Type: Inground
Adjustable: No

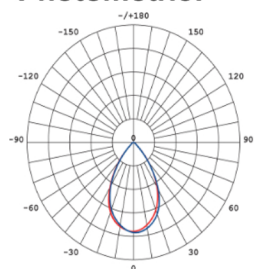
Technical Specifications:

Wattage: 20.4W
Voltage: 220-240VAC
Frequency: 50-60Hz
Light Source: OSRAM/EPISTAR/CREE
Lumen: 95lm/W
Mac Adam: 3 Step
Safety Class: I
Cut out : $\varnothing 112 \times H177$ mm
Working Temperature: -20°C to 50°C
Life Time: 50,000hrs (L80/B10) at 25°C
Warranty: 5 Years

Parameter:

Wattage(W)	:	20.4W
Finish	:	Stainless Steel (SS)
Kelvin*	:	2700K / 3000K / 4000K / 6000K
Beam Angle	:	15° / 24° / 36° / 50°
CRI	:	80+
Control Mode	:	ON/OFF / 0/1-10V / DALI
Type	:	Type A / Type B / Type C / Type D

Photometric:



Standard:

EN 60598-1
EN 60598-2-2
EN 60598-3-2
EN 60598-3-3

Order Code:

Product Code	Wattage	CCT	Voltage(AC)	Beam Angle	Finish	Control Mode
544123	20 - 20.4W	27-2700K	A - 220 - 240VAC	15-15°	SS - Stainless Steel	1-ON/OFF
		30-3000K		24-24°		2-0/1-10V
		40-4000K		36-36°		3-DALI
		60-6000K		50-50°		

Ex: Order Code: 5441232027A'15SS1

Pluxb luminaires are developed with globally recognized and tested components suppliers, however as per international standards tolerance in initial flux and connected load is at $\pm 5\%$. Unless stated otherwise, the values apply to an ambient temperature of 25°C