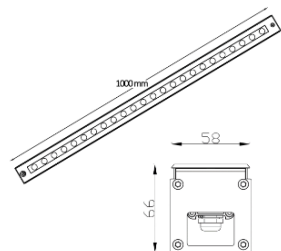
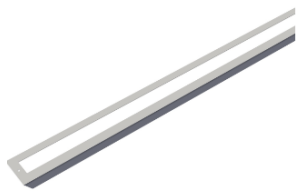


GLOSS'F



Description:

GLOSS'F is a Linear inground outdoor lighting fixtures designed to be installed flush with the ground surface, providing subtle and aesthetically pleasing illumination.

These lights typically have a linear or elongated shape, allowing them to seamlessly blend into pathways, driveways, or other outdoor areas.

Linear inground lights often feature durable and weather-resistant materials to withstand outdoor conditions

It comes with different CCT, R/G/B LED sources and various beam angles this family is a perfect solution to the requirement.

They are commonly used for accentuating architectural features, guiding pathways, or creating ambiance in outdoor spaces.

Product Specifications:

Front cover : Stainless steel 316 SUS
Housing : Die cast Aluminum grey
Glass : Matt glass
Gasket: Molding shaped silicone seal
Lens/Reflector : Optical lens (efficiency>90%)
Power Cable: 0.5 mt. power cable included
Driver : High efficiency, low flicker driver
Installation Type: Inground
Adjustable: No

Technical Specifications:

Wattage: 24 - 32W
Voltage: DC24V / 220-240VAC
Frequency: 50-60Hz
Light Source: OSRAM/EPISTAR/CREE
Lumen: 100lm/W
Mac Adam: 3 Step
Safety Class: III / II
Working Temperature:-20°C to 55°C
Life Time: 50,000hrs (L80/B10) at 35°C
Warranty: 5 Years

Parameter:

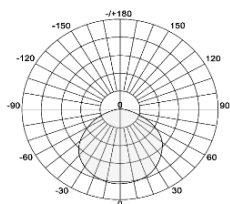
| | | |
|--------------|---|---|
| Wattage(W) | : | 24W / 32W |
| Finish | : | Stainless Steel SUS 316 (SS) |
| Kelvin* | : | 2700K/ 3000K / 4000K / 6000K / RGB /RGBW |
| Beam Angle | : | 120° |
| CRI | : | 80 |
| Control Mode | : | ON/OFF / DALI / 0 / 1-10V / Phase Cut / DMX |

Order Code:

| Product Code | Wattage | CCT | Voltage | Beam Angle | Finish | Control Mode |
|--------------|-----------------|-------------|---------|------------|------------------------|--------------|
| 5495967 | 24-24W(48X0.5W) | 27-2700K | D-24VDC | 120-120° | SS-Stainless Steel 316 | 1-ON/OFF |
| | 32-32W(48X0.7W) | 30-3000K | | | | 2-DALI |
| | | 40-4000K | | | | 3-0/1-10V |
| | | 60-6000K | | | | 4-Phase cut |
| | | 92-RGB | | | | 5-DMX |
| | | 93-RGB DMX | | | | |
| | | 92-RGBW | | | | |
| | | 93-RGBW DMX | | | | |

54959672427D'120S

Photometric:



Standards

EN 60598-1
EN 60598-2-2
EN 60598-3-2
EN 60598-3-3

Pluxb luminaires are developed with globally recognized and tested components suppliers, however as per international standards tolerance in initial flux and connected load is at $\pm 5\%$. Unless stated otherwise, the values apply to an ambient temperature of 25°C

Ex: Order Code: S1

| Product Code | Wattage | CCT | Voltage | Beam Angle | Finish | Control Mode |
|--------------|-----------------|-------------|------------|------------|------------------------|--------------|
| 5495967 | 24-24W(48X0.5W) | 27-2700K A- | 220-240VAC | 120-120° | SS-Stainless Steel 316 | 1-ON/OFF |
| | | 30-3000K | | | | 2-DALI |
| | | 40-4000K | | | | 3-0/1-10V |
| | | 60-6000K | | | | 4-Phase cut |
| | | | | | | 5-DMX |

54959672427A'120S

Ex: Order Code: S1

Pluxb luminaires are developed with globally recognized and tested components suppliers, however as per international standards tolerance in initial flux and connected load is at $\pm 5\%$. Unless stated otherwise, the values apply to an ambient temperature of 25°C