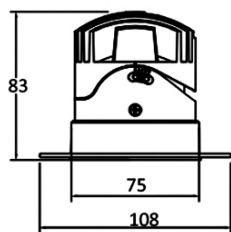
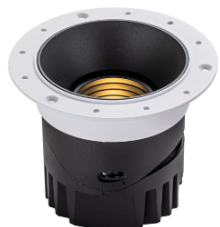


GEM



Features:

Gem Series Trimless spot and downlight with high quality CNC aluminum body and optical lens, solvent free power coating for a perfect finish.

Deeply hidden reflector UGR < 16.

Increase the length between the COB and the light outlet which can improve the anti-glare performance.

The light is reflected from the reflector and filtered by the anti-glare honeycomb to decrease stray light effectively.

Pre-embedded design, quick installation and convenient maintenance of fixtures innovation and high efficiency mirror reflector.

Technical Specifications:

Input Voltage: 220-240 V AC, 50 Hz.

Wattage: 8-10-15 W

High Lumen: 120lm/W

3 STEP Mac Adam

High efficiency, low flicker driver

Lamp Type: COB

Operating Temperature: -20°C to 45°C

Glow Wire Test 850° C

Warranty: 5 Years

Life Time: 50,000hrs at 25°C

(L80/B10).

Fields of Application:

Retail

Education

Galleries hotels

Living spaces

Conference rooms

Counters

Restaurants

Installation Method:

Recessed Adjustable.

Wattage(W)	:	8	10	12			
Finish	:	White(W)	Black(B)				
Kelvin*	:	2700K	3000K	4000K	5000K	6000K	6500K
Beam Angle	:	15°	24°	36°			
CRI	:	80+	90+				
Driver	:	ON/OFF	0/1-10V	DALI	Phase Dimming	Bluetooth	

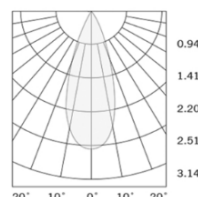
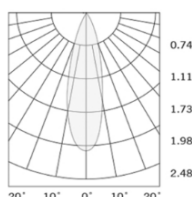
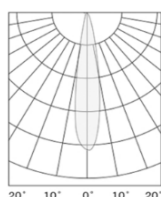
*Special Color and Finish on request

Product Code (96810815.20):

Wattage	Lumens(lm)	Dimension(ØxH) mm	Cut out (mm)
8	960LM	108x83	75
10	1200LM	108x83	75
15	1800LM	108x83	75

*Luminous flux value is calculated for 4000K CRI>80

Photometric:



Pluxb luminaires are developed with globally recognized and tested components suppliers, however as per international standards tolerance in initial flux and connected load is at ±5%. Unless stated otherwise, the values apply to an ambient temperature of 25°C

- Standards
- EN 60598-1
- EN 60598-2-2
- EN 60598-2-22
- EN 60598-3-2
- EN 60598-3-3

Order Code Ex: 96810815.20 27K 15D 8 1 W

CCT	Beam Angle	CRI	Driver	Finish
27K - 2700K	15D - 15°	8->80	1 - ON/OFF	W-White
30K - 3000K	24D - 24°	9->90	2 - 0/1-10V	B-Black
40K - 4000K	36D - 36°		3 - DALI	
50K - 5000K			4 - Phase Dimming	
60K - 6000K			5 - Bluetooth	
65K - 6500K				

Pluxb luminaires are developed with globally recognized and tested components suppliers, however as per international standards tolerance in initial flux and connected load is at ±5%. Unless stated otherwise, the values apply to an ambient temperature of 25°C