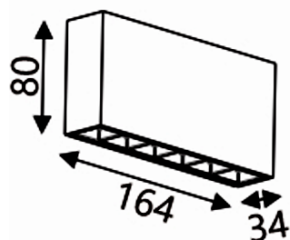
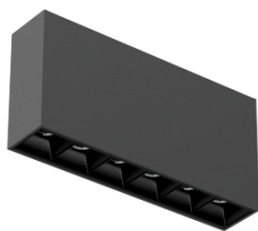


FLUR



Features:

FLUR Surface Mounted linear downlight, can be molded into sleek, modern designs that suit contemporary spaces.

The body of the linear light is made from die cast CNC aluminum, which is a manufacturing process where molten aluminum is poured into a mold to create precise, durable, and lightweight components, which helps in dissipating heat generated by the light source, with PMMA Lens re highly transparent, ensuring excellent light output while also diffusing light evenly across a surface to reduce glare.

Product has Ultra compact design and ensures UGR<16.

Ideal for spaces with limited ceiling height or areas that need additional lighting without the complexity of installation.

Technical Specifications:

Input Voltage: 220- 240 V AC, 50 Hz.

Wattage: 10W

High Lumen: 105lm/w

3 SDCM / 2 SDCM

High efficiency, low flicker driver

Lamp Type: COB

Operating Temperature: -20°C to 45°C

Glow Wire Test 850° C

Warranty: 5 Years

Life Time: 50,000hrs at ta 25°C

(L80/B10)

Fields of Application:

Retail

Education

Galleries hotels

Living spaces

Installation Method:

Surface Mounted

Wattage(W)	:	10				
Finish	:	White(W)	Black(B)	Gray(G)		
Kelvin*	:	2700K	3000K	4000K	5000K	5700K
Beam Angle	:	15°	24°	36°	50°	
CRI	:	80+	90+	97+		
Driver	:	ON/OFF	0/1-10V	DALI	Phase Dimming	Bluetooth

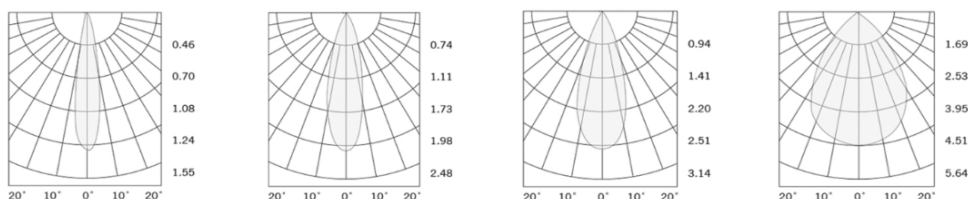
*Special Color and Finish on request

Product Code (96816410):

Wattage	Lumens(lm)	Dimension(LxWxH) mm
10	1050LM	164x34x80

*Luminous lux value is calculated for 4000K CRI>80

Photometric:



Pluxb luminaires are developed with globally recognized and tested components suppliers, however as per international standards tolerance in initial flux and connected load is at $\pm 5\%$. Unless stated otherwise, the values apply to an ambient temperature of 25°C

- Standards
- EN 60598-1
- EN 60598-2-2
- EN 60598-2-22
- EN 60598-3-2
- EN 60598-3-3

Order Code Ex: ~~96816410~~ 27K 15D 8 1 W

CCT	Beam Angle	CRI	Driver	Finish
27K - 2700K	15D - 15°	8->80	1 - ON/OFF	W-White
30K - 3000K	24D - 24°	9->90	2 - 0/1-10V	B-Black
40K - 4000K	36D - 36°	9->97	3 - DALI	G-Gray
50K - 5000K	50D - 50°		4 - Phase Dimming	
57K - 5700K			5 - Bluetooth	

Pluxb luminaires are developed with globally recognized and tested components suppliers, however as per international standards tolerance in initial flux and connected load is at ±5%. Unless stated otherwise, the values apply to an ambient temperature of 25°C