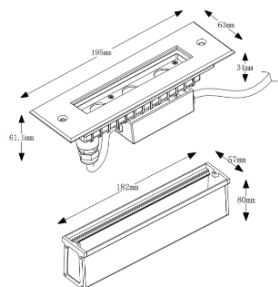
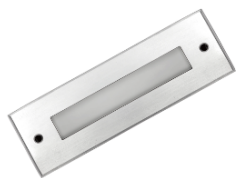


FLASH'F



Description:

FLASH'F is a Linear inground outdoor lighting fixtures designed to be installed flush with the ground surface, providing subtle and aesthetically pleasing illumination. These lights typically have a linear or elongated shape, allowing them to seamlessly blend into pathways, driveways, or other outdoor areas.

Linear inground lights often feature durable and weather-resistant materials to withstand outdoor conditions

It comes with different CCT , R/G/B LED sources and various beam angles this family is a perfect solution to the requirement.

They are commonly used for accentuating architectural features, guiding pathways, or creating ambiance in outdoor spaces.

Product Specifications:

Front cover : Stainless steel 316 SUS
Housing : Die cast Aluminum grey
Glass : Tempered Frosted glass
Gasket: Molding shaped silicone seal
Lens/Reflector : Optical lens (efficiency>90%)
Power Cable: 0.5 mt. power cable included
Driver : High efficiency, low flicker driver
Installation Type: Inground
Adjustable: No

Technical Specifications:

Wattage: 2W
Voltage: DC24V / 220-240VAC
Frequency: 50-60Hz
Light Source: OSRAM/EPISTAR/CREE
Lumen: 100lm/W
Mac Adam: 3 Step
Safety Class: III / II
Working Temperature:-20°C to 55°C
Life Time: 50,000hrs (L80/B10) at 35°C
Warranty: 5 Years

Parameter:

Wattage(W)	:	2W
Finish	:	Stainless Steel 316 SUS (SS)
Kelvin*	:	2700K/ 3000K / 4000K / 6000K / RGB
Beam Angle	:	120°
CRI	:	80
Control Mode	:	ON/OFF / DALI / 0 / 1-10V / Phase Cut / DMX

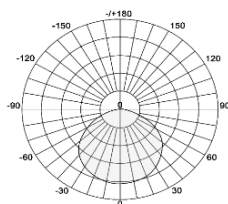
Order Code:

Product Code	Wattage	CCT	Voltage	Beam Angle	Finish	Control Mode
5496461	02-2W	27-2700K	D-24VDC	120-120°	SS-Stainless Steel 316	1-ON/OFF
		30-3000K				2-DALI
		40-4000K				3-0/1-10V
		60-6000K				4-Phase cut
		92-RGB				5-DMX
		93-RGB DMX				

54964610227D'120S

Ex: Order Code: S1

Photometric:



Standards:

EN 60598-1

EN 60598-2-2

EN 60598-3-2

EN 60598-3-3

Pluxb luminaires are developed with globally recognized and tested components suppliers, however as per international standards tolerance in initial flux and connected load is at $\pm 5\%$. Unless stated otherwise, the values apply to an ambient temperature of 25°C

Product Code	Wattage	CCT	Voltage	Beam Angle	Finish	Control Mode
5496461	02-2W	27-2700K	A-220-240VAC	120-120°	SS-Stainless Steel 316	1-ON/OFF
		30-3000K				2-DALI
		40-4000K				3-0/1-10V
		60-6000K				4-Phase cut
						5-DMX
					54964610227A'120SS	
Ex: Order Code: 1						

Pluxb luminaires are developed with globally recognized and tested components suppliers, however as per international standards tolerance in initial flux and connected load is at $\pm 5\%$. Unless stated otherwise, the values apply to an ambient temperature of 25°C