

## FINN



### Features:

FINN is a canopy light is crafted from non-corrosive materials, ensuring durability with no risk of corrosion while maintaining an exquisite, modern appearance. Equipped with Lumileds 3030/5050 illumination-grade LED light source, it delivers outstanding lumen output, high efficacy of over 140 lm/W, and long-lasting stability for brilliant lighting performance. Its thoughtfully engineered heat sink design allows effective ventilation, prevents laceration risks, and accelerates heat dissipation through the gaps between modules—also minimizing dust accumulation. The innovative frame holder design enhances both simplicity and firmness during installation. For added reliability, the fixture integrates a waterproof connector for internal wiring, ensuring safety, convenience, and quick installation.

### Technical Specifications:

Input Voltage: AC100V-277V,50-60Hz  
Wattage: 40 - 240W  
Housing : Die cast aluminum  
High Lumen: 140lm/w  
3 Step Mac Adam  
Lamp Type: Lumiled 3030/5050  
Operating Temperature: -25°C to 50C  
Warranty: 5 Years  
Life Time: 50,000hrs at 25°C (L80/B10)

### Fields of Application:

Airport  
Stadium  
Parking Lot  
Petrol Stations  
Warehouses  
Building Entrances  
Transport Hubs

### Installation Method:

Surface Mounted / Ceiling Recessed

Wattage(W)	:	40	50	60	80	100	120	150	180	160	200	240
Finish	:	Black(B)										
Kelvin*	:	3000K		4000K		5000K		5700K		6500K		
Beam Angle	:	60°		90°		110°						
CRI	:	70+		80+								
Driver	:	ON/OFF		0/1-10V		DALI						

\*Special Color and Finish on request

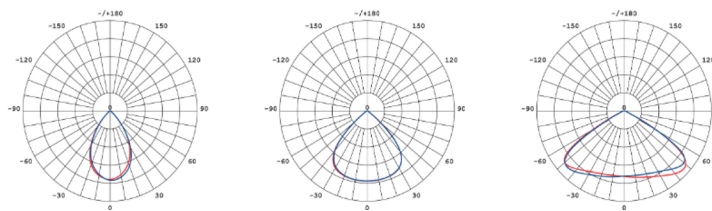
### Product Code (558450240):

Wattage	Lumens(lm)	Dimension(LxWxH) mm	Cut Out(φmm)
40	5,600LM	231x316x120	202x285
50	7,000LM	231x316x120	202x285
60	8,400LM	231x316x120	202x285
80	11,200LM	304x316x120	275x285
100	14,000LM	304x316x120	275x285
120	16,800LM	304x316x120	275x285
150	21,000LM	377x316x120	348x285
180	25,200LM	377x316x120	348x285
160	22,400LM	450x316x120	421x285
200	28,000LM	450x316x120	421x285
240	33,600LM	450x316x120	421x285

\*Luminous øux value is calculated for 4000K CRI>80

Pluxb luminaires are developed with globally recognized and tested components suppliers, however as per international standards tolerance in initial flux and connected load is at ±5%. Unless stated otherwise, the values apply to an ambient temperature of 25°C

## Photometric:



### Standards

EN 60598-1

EN 60598-2-2

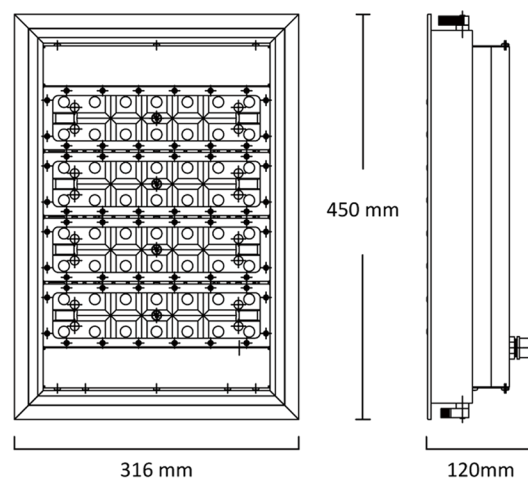
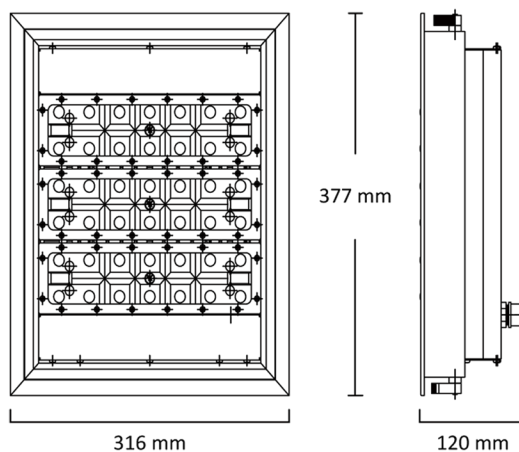
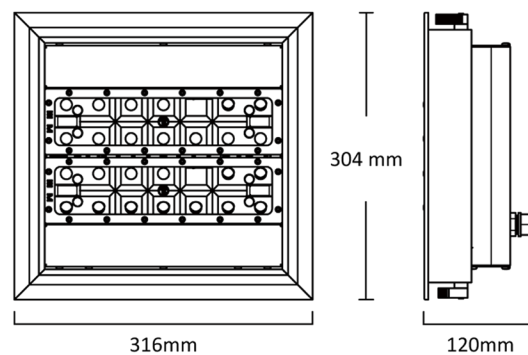
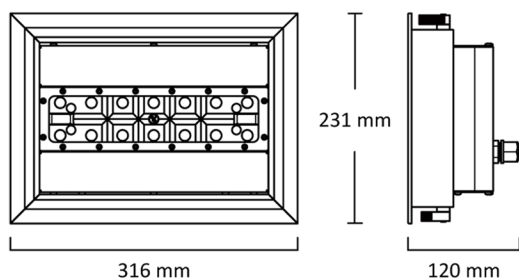
EN 60598-2-22

EN 60598-3-2

EN 60598-3-3

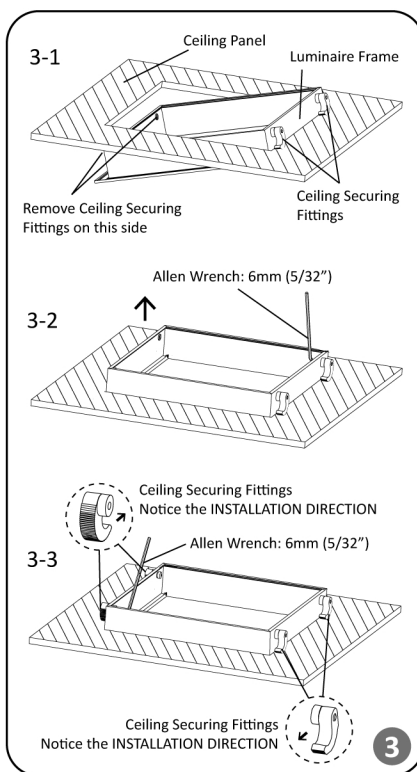
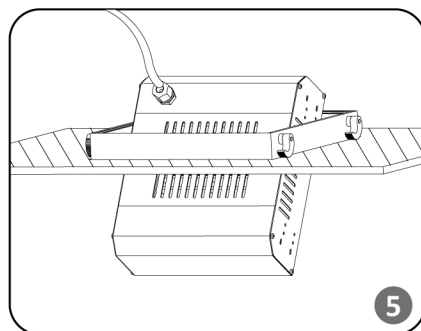
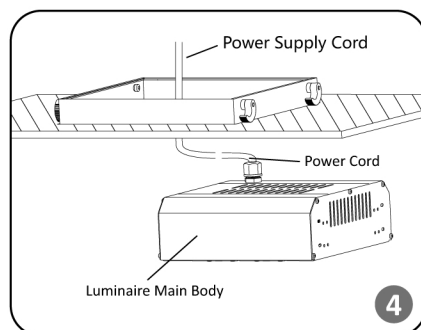
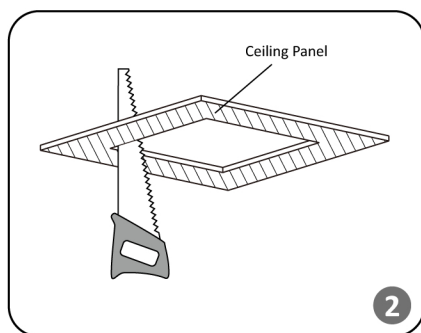
Order Code Ex: 558450240 30K 60D 7 1 B

CCT	Beam Angle	CRI	Driver	Finish
30K - 3000K	60D - 60°	7->70	1 - ON/OFF	B-Black
40K - 4000K	90D - 90°	8->80	2 - 0/1-10V	
50K - 5000K	110D - 110°		3 - DALI	
57K - 5700K				
65K - 6500K				



Pluxb luminaires are developed with globally recognized and tested components suppliers, however as per international standards tolerance in initial flux and connected load is at  $\pm 5\%$ . Unless stated otherwise, the values apply to an ambient temperature of 25°C

# Installation Manual :



## STEP 1:

Open the mounting hole on the Ceiling Panel. (See **Figure 1** for opening size)

## STEP 2:

Remove two(2) Ceiling Securing Fittings of one side, bring the side of Luminaire Frame with Ceiling Securing Fittings into Ceiling Panel. See **Figure 3-1**.

Bring entire Luminaire Frame into Ceiling Panel, Clamp the Ceiling Panel by Ceiling Securing Fittings and tighten by 6mm (5/32") Allen Wrench. See **Figure 3-2**.

Mount the removed Ceiling Securing Fittings back to Luminaire Frame, notice that the both sides are opposited. Clamp and tighten by 6mm (5/32") Allen Wrench. See **Figure 3-3**.

## STEP 3:

Connect the **Power Cord** to the supply wiring per "**Electrical Connections**" section for completing electrical connections.

## STEP 4:

Tilt and bring the Luminaire Main Body into Luminaire Frame after the step of "**Electrical Connections**". See **Figure 5**.

## STEP 5:

Place the Luminaire Main Body by horizontal onto Luminaire Frame, fine tuning and ensure the Luminaire Main Body is snapped into to the slot of Luminaire Frame. See **Figure 6**.

Pluxb luminaires are developed with globally recognized and tested components suppliers, however as per international standards tolerance in initial flux and connected load is at  $\pm 5\%$ . Unless stated otherwise, the values apply to an ambient temperature of 25°C