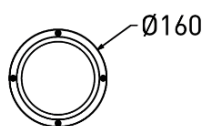
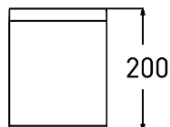


EZL



Features:

EZL Cylindrical surface mounted downlight, modern designed and clean lines, simple look. High-quality die cast aluminum body, a durable, lightweight, and precise product, and anti-glare reflector with excellent light dispersion.

High thermal conductivity double-sided aluminum substrate, so it helps keep the light fixture cool.

The reflector enhances the light's intensity by reflecting more light onto the target area.

This IP65 rating makes the downlight suitable for both indoor and outdoor installations, providing durability in challenging conditions.

Technical Specifications:

Input Voltage: 220-240 V AC, 50 Hz.

Wattage: 35-50W

High Lumen: 120lm/w

3 STEP Mac Adam

High efficiency, low flicker driver

Lamp Type: COB

Operating Temperature: -20°C to 45°C

Glow Wire Test 850° C

Warranty: 5 Years

Life Time: 50,000hrs at 25°C (L80/B10)

Fields of Application:

Industrial spaces

Education

Galleries hotels

Living spaces

Conference rooms

Outdoor areas

Restaurants

Bathroom

Installation Method:

Surface Mounted

Wattage(W)	:	35	50			
Finish	:	White(W)				
Kelvin*	:	2700K	3000K	4000K	5000K	5700K
Beam Angle	:	57°				
CRI	:	80+	90+	95+		
Driver	:	ON/OFF	0/1-10V	DALI	Phase Dimming	Bluetooth

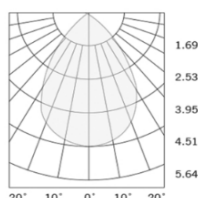
*Special Color and Finish on request

Product Code (97813532):

Wattage	Lumens(lm)	Dimension(ØxH) mm
35	4200LM	160x200
50	6000LM	160x200

*Luminous lux value is calculated for 4000K CRI>80

Photometric:



- Standards
- EN 60598-1
- EN 60598-2-2
- EN 60598-2-22
- EN 60598-3-2
- EN 60598-3-3

Order Code Ex: 97813532 27K 57D 8 1 W

CCT	Beam Angle	CRI	Driver	Finish
27K - 2700K	57D - 57°	8->80	1 - ON/OFF	W-White
30K - 3000K		9->90	2 - 0/1-10V	
40K - 4000K		9->95	3 - DALI	
50K - 5000K			4 - Phase Dimming	
57K - 5700K			5 - Bluetooth	

Pluxb luminaires are developed with globally recognized and tested components suppliers, however as per international standards tolerance in initial flux and connected load is at ±5%. Unless stated otherwise, the values apply to an ambient temperature of 25°C