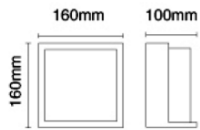
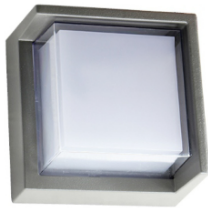


EXTIN'S



Description:

EXTIN'S is a modern decorative wall-mounted LED light fixture with a oval design. The light has a frosted or opaque diffuser, which softens the light it emits.

This type of light fixtures are often designed to be weather-resistant, ensuring durability and functionality in various environmental conditions.

These lights often contribute to ambient lighting and can enhance the visual appeal of indoor or outdoor spaces.

They come in various designs, wattages, and light sources, providing flexibility for different lighting preferences and applications.

It has very wide application like For enhance architectural features and provide ambient lighting in residential and commercial spaces, adding both style and functionality.

Product Specifications:

Housing : Die cast Aluminium
 Diffuser : PMMA Optics
 Gasket: Moulding shaped silicone seal
 Power Cable: 0.5 mt. power cable
 Driver : High efficiency, low flicker driver
 Installation Type: Wall Mounted
 Adjustable: No
 Warranty: 5 Years

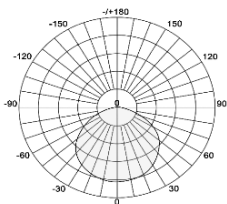
Technical Specifications:

Wattage: 9W
 Voltage: 85-265VAC, 50-60Hz
 Light Source: OSRAM/ EPISTAR/ CREE
 Lumen: 100lm/W
 Mac Adam: 3 Step
 Safety Class: II
 Working Temperature:-20°C to 55°C
 Life Time: 50,000hrs (L80/B10) at 35°C

Parameter:

Wattage(W)	:	9W
Finish	:	Grey (G) / Black (B) / White (W) / Customized (C)
Kelvin*	:	2700K/ 3000K / 4000K / 6000K
Beam Angle	:	120°
CRI	:	80
Control Mode	:	ON/OFF / DALI / 0 / 1-10V / Phase Cut

Photometric:



Order Code:

Product Code	Wattage	CCT	Voltage	Beam Angle	Finish	Control Mode
540160	09-9W	27-2700K	A-220-240VAC	120-120°	G-Grey	1-ON/OFF
		30-3000K			B-Black	2-DALI
		40-4000K			W-White	3-0/1-10V
		60-6000K			C-Customized	4-Phase cut

Ex: Order Code: 5401600927A'120G1

Standards :

- EN 60598-1
- EN 60598-2-2
- EN 60598-3-2
- EN 60598-3-3

Pluxb luminaires are developed with globally recognized and tested components suppliers, however as per international standards tolerance in initial flux and connected load is at ±5%. Unless stated otherwise, the values apply to an ambient temperature of 25°C