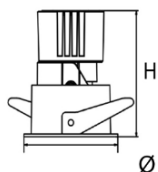
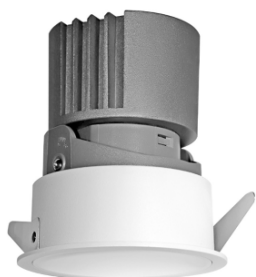


EVA PRO



Secondary Reflector



Features:

Eva Pro Recessed Adjustable downlight with PC reflector and PMMA lens.
 Precision engineered adjustment mechanism, easy to adjust to specific angle.
 Thermally engineered heatsink creates highly efficient passive cooling system.
 Different colors of secondary reflector are available.
 Product has Ultra compact design and ensures UGR<19.
 Anti-glare accessory provides maximum eye comfort.
 30° tilt and 355° rotation.

Technical Specifications:

Input Voltage: 220-240 V AC, 50 Hz.
 Wattage: 20 - 28 W
 High Lumen: 115lm/w
 3 STEP Mac Adam
 High efficiency, low flicker driver
 Lamp Type: COB
 Operating Temperature: -20°C to 45°C
 Glow Wire Test 850° C
 Warranty: 5 Years
 Life Time: 50,000hrs at 25°C (L80/B10)

Fields of Application:

Retail
 Galleries hotels
 Living spaces
 Conference rooms
 Counters
 Restaurants


Installation Method:

Recessed Adjustable

| | | | | | | |
|------------|---|----------|----------|---------|---------------|-----------|
| Wattage(W) | : | 20 | 25 | 28 | | |
| Finish | : | White(W) | Black(B) | Gray(G) | | |
| Kelvin* | : | 2700K | 3000K | 4000K | 5000K | 5700K |
| Beam Angle | : | 15° | 24° | 36° | | |
| CRI | : | 80+ | 90+ | | | |
| Driver | : | ON/OFF | 0/1-10V | DALI | Phase Dimming | Bluetooth |

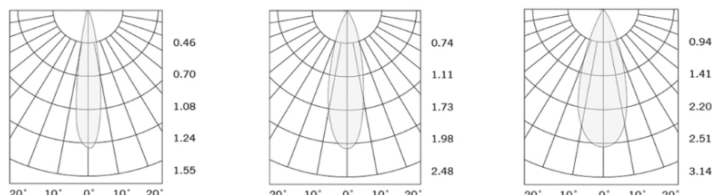
*Special Color & Finish on request

Product Code (96810528.50):

| Wattage | Lumens(lm) | Dimension(Øx H) mm | Cut out  (mm) |
|---------|------------|--------------------|--|
| 20 | 2300LM | 105x109.5 | 95 |
| 25 | 2875LM | 105x121.5 | 95 |
| 28 | 3220LM | 105x121.5 | 95 |

*Luminous flux value is calculated for 4000K CRI>80

Photometric:



- Standards
- EN 60598-1
- EN 60598-2-2
- EN 60598-2-22
- EN 60598-3-2
- EN 60598-3-3

Order Code Ex: 96810528.50 27K 15D 8 1 W

| CCT | Beam Angle | CRI | Driver | Finish |
|-------------|------------|-------|-------------------|---------|
| 27K - 2700K | 15D - 15° | 8->80 | 1 - ON/OFF | W-White |
| 30K - 3000K | 24D - 24° | 9->90 | 2 - 0/1-10V | B-Black |
| 40K - 4000K | 36D - 36° | | 3 - DALI | G-Gray |
| 50K - 5000K | | | 4 - Phase Dimming | |
| 57K - 5700K | | | 5 - Bluetooth | |

Pluxb luminaires are developed with globally recognized and tested components suppliers, however as per international standards tolerance in initial flux and connected load is at ±5%. Unless stated otherwise, the values apply to an ambient temperature of 25°C