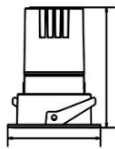
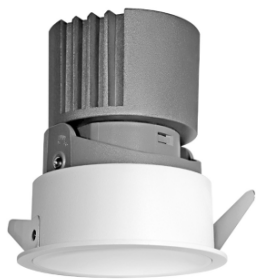


## EVA PRO



Secondary Reflector



### Features:

Eva Pro Recessed Adjustable downlight with PC reflector and PMMA lens.  
Precision engineered adjustment mechanism, easy to adjust to specific angle.  
Thermally engineered heatsink creates highly efficient passive cooling system.  
Different colors of secondary reflector are available.  
Product has Ultra compact design and ensures UGR<19.  
Anti-glare accessory provides maximum eye comfort.  
30° tilt and 355° rotation.

### Technical Specifications:

Input Voltage: 220-240 V AC, 50 Hz.  
Wattage: 5 - 8 W  
High Lumen: 115lm/w  
3 STEP Mac Adam  
High efficiency, low flicker driver  
Lamp Type: COB  
Operating Temperature: -20°C to 45°C  
Glow Wire Test 850° C  
Warranty: 5 Years  
Life Time: 50,000hrs at 25°C (L80/B10)

### Fields of Application:

Retail  
Galleries hotels  
Living spaces  
Conference rooms  
Counters  
Restaurants

### Installation Method:

Recessed Adjustable

Wattage(W)	:	5	8			
Finish	:	White(W)	Black(B)	Gray(G)		
Kelvin*	:	2700K	3000K	4000K	5000K	5700K
Beam Angle	:	15°	24°	36°		
CRI	:	80+	90+			
Driver	:	ON/OFF	0/1-10V	DALI	Phase Dimming	Bluetooth

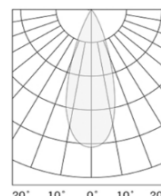
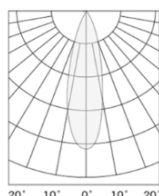
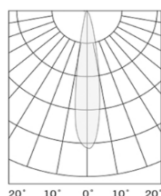
\*Special Color & Finish on request

### Product Code (96806508.50):

Wattage	Lumens(lm)	Dimension(Øx H) mm	Cut out (mm)
5	575LM	65x84.2	55
8	920LM	65x84.2	55

\*Luminous flux value is calculated for 4000K CRI>80

### Photometric:



### Standards

EN 60598-1

EN 60598-2-2

EN 60598-2-22

EN 60598-3-2

EN 60598-3-3

Order Code Ex: 96806508.50 27K 15D 8 1 W

CCT	Beam Angle	CRI	Driver	Finish
27K - 2700K	15D - 15°	8->80	1 - ON/OFF	W-White
30K - 3000K	24D - 24°	9->90	2 - 0/1-10V	B-Black
40K - 4000K	36D - 36°		3 - DALI	G-Gray
50K - 5000K			4 - Phase Dimming	
57K - 5700K			5 - Bluetooth	

Pluxb luminaires are developed with globally recognized and tested components suppliers, however as per international standards tolerance in initial flux and connected load is at ±5%. Unless stated otherwise, the values apply to an ambient temperature of 25°C