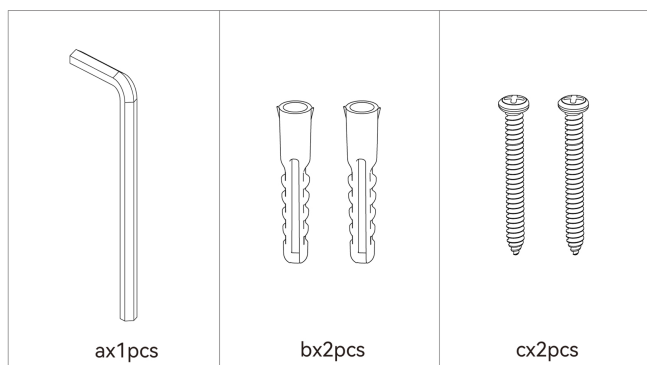
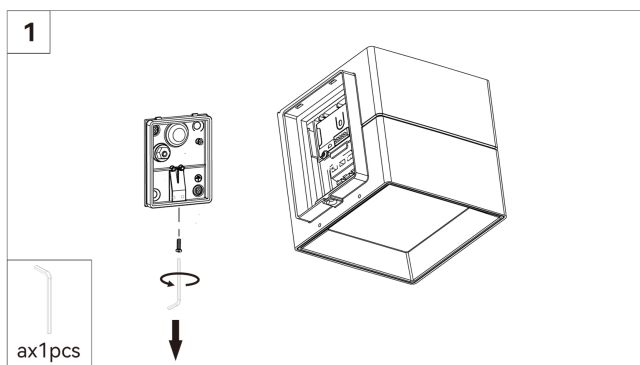


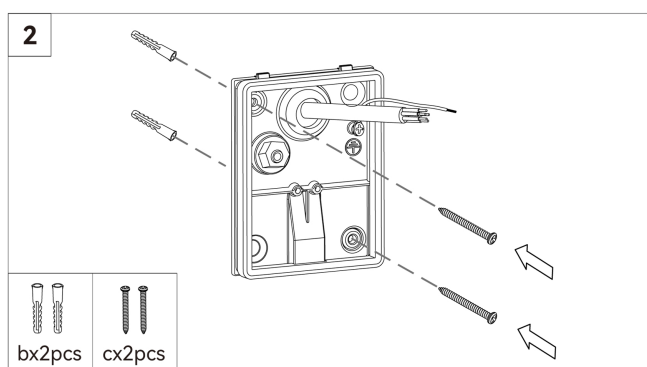
Installation instruction



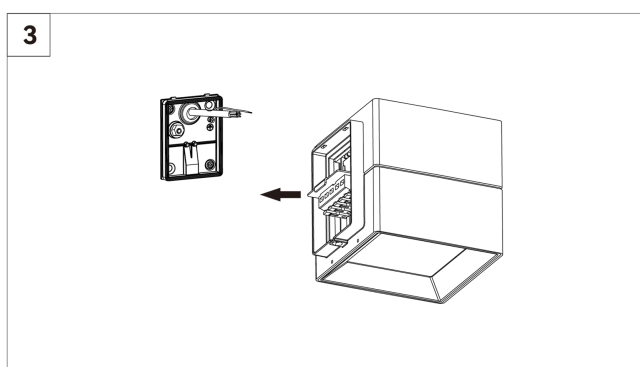
Accessories bag



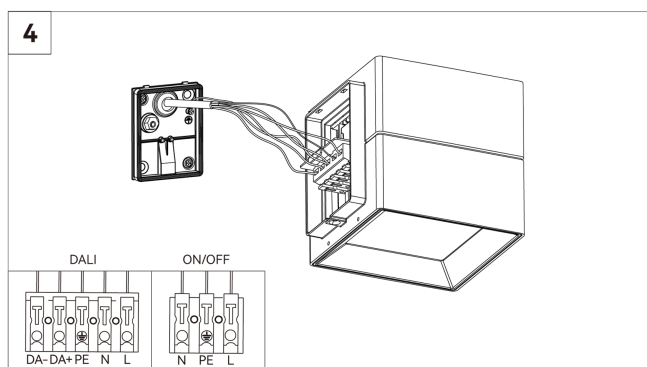
Unscrew and disassemble the mounting plate.



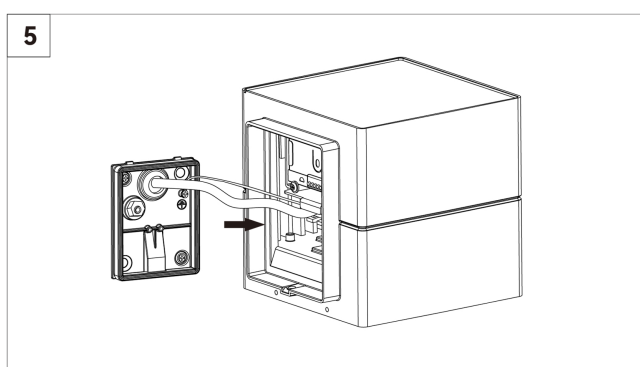
Thread the power cable through the mounting plate. Fasten the mounting plate to the wall.



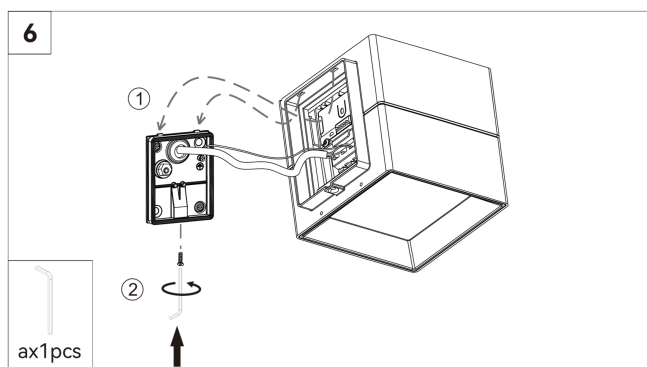
Pull out the terminal slide.



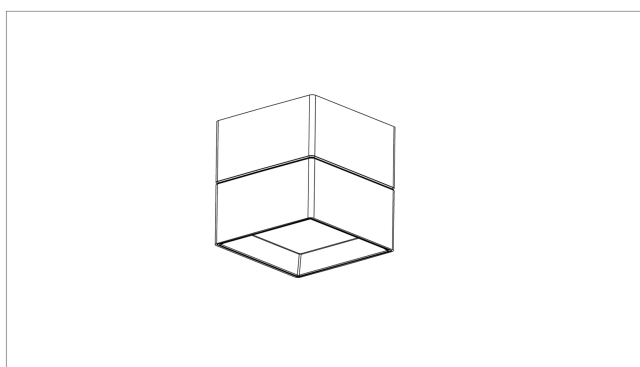
Connect the cable (make sure the power is off, AC200-240V).



After finishing the wiring, push the terminal board slide into the lamp body.



Hang the lamp body onto the mounting plate and secure it at the bottom using M4 hex socket screws.



Finish

Pluxb luminaires are developed with globally recognized and tested components suppliers, however as per international standards tolerance in initial flux and connected load is at $\pm 5\%$. Unless stated otherwise, the values apply to an ambient temperature of 25°C