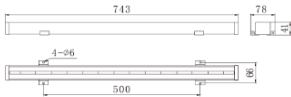
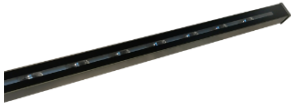


## CORAL



### Description:

CORAL is IP65-rated Window light is designed for durability and elegance, making it suitable for various environments. With a zero-glare design, it ensures uniform illumination without any light leakage, even when standing directly in front of it.

Tempered glass cover offers superior scratch and impact protection.

The integrated aluminum alloy housing provides excellent heat dissipation, keeping the LED heat sink surface less than 5°C above ambient temperature. Its sleek and modern design seamlessly blends with any interior while delivering flicker-free and energy-efficient lighting for a comfortable and visually appealing experience.

Control Mode : DMX512, RDM

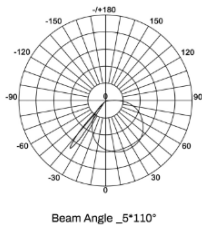
### Product Specifications:

Housing : Die cast Aluminum  
Glass : Tempered glass  
Gasket: Molding shaped silicone seal  
Lens/Reflector : Optical lens (efficiency>90%)  
Power Cable: 0.5 mt. power cable included  
Driver : High efficiency, low flicker driver  
Installation Type: Surface Mounted

### Technical Specifications:

Wattage: 30-35W  
Voltage: DC24V  
Frequency: 50-60Hz  
Light Source: OSRAM/EPISTAR/CREE  
Lumen: 60lm/W  
Mac Adam: 3 Step  
Safety Class: III  
Working Temperature: -25°C to 60°C  
Life Time: 50,000hrs (L80/B10) at 35°C  
Humidity : <95%  
Warranty: 5 Years

### Photometric:



### Parameter:

Wattage(W)	:	30W / 35W
Finish	:	Black (B)
Kelvin*	:	1700K/ 2200K/ 2700K/ 3000K/ 4000K/ 6000K / 6500K / RGB/ RGBW/ DMX
Beam Angle	:	5*110°
CRI	:	80+
Control Mode	:	ON/OFF / DALI / 0 / 1-10V / Phase Cut / DMX

### Standards :

- EN 60598-1
- EN 60598-2-2
- EN 60598-3-2
- EN 60598-3-3

### Order Code:

Product Code	Wattage	CCT	Voltage	Beam Angle	Finish	Control Mode
555743	30 - 30W (7x4.2W)	17-1700K	D-24VDC	5*110-5*110°	B - Black	1-ON/OFF
	35 - 35W (14x2.5W)	22-2200K				2-DALI
		27-2700K				3-0/1-10V
		30-3000K				4-DMX
		40-4000K				
		60-6000K				
		92-RGB				
		93-RGB DMX				
		82-RGBW				

Pluxb luminaires are developed with globally recognized and tested components suppliers, however as per international standards tolerance in initial flux and connected load is at ±5%. Unless stated otherwise, the values apply to an ambient temperature of 25°C

Pluxb luminaires are developed with globally recognized and tested components suppliers, however as per international standards tolerance in initial flux and connected load is at  $\pm 5\%$ . Unless stated otherwise, the values apply to an ambient temperature of 25°C