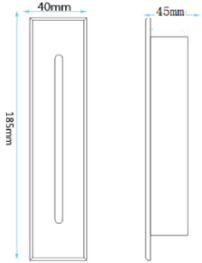
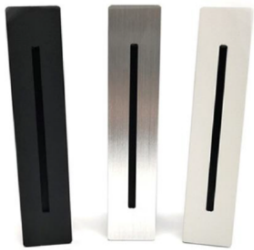


COMFY



Additional Option:

Low voltage DC12V/DC24V/DC48V
 Photocell (Dusk to Dawn)
 PIR/Motion Sensor

Features:

COMFY outdoor wall recessed light housing made up of die-cast aluminium body, Matt White/Grey/ Matt black/Chrome with embedded part is ABS recessed parts included.

This Wall light provide directional lighting to illuminate the steps evenly and prevent tripping hazards. The light is usually directed downward to focus on the walking path.

This type of light fixtures are often designed to be weather-resistant, ensuring durability and functionality in various environmental conditions.

They utilize energy-efficient LED technology, offering longevity, low heat emission, and a variety of color options.

They serve both functional and aesthetic purposes, enhancing safety while contributing to the overall design of a space

It is use for a specific application, it's essential to consider factors such as the level of illumination needed, the design aesthetic of the space, and any applicable safety regulations.

Technical Specifications:

Input Voltage : 220- 240 V AC, 50 Hz.

Wattage : 3W

High Lumen : 50lm/W

4 STEP Mac Adam

Isolated constant current driver

Lamp Type : SMD

Operating Temperature: -25°C to 60°C

Glow Wire Test 850° C

Warranty : 5 Years

Life Time : 50,000hrs at ta 35°C

Fields of Application:

Boundary Wall

Balcony

Roof

Shaft

Staircase

Installation Method:

Wall Recessed

| | | | | |
|------------|---|-----------------|-------------------|-------|
| Wattage(W) | : | 3 | | |
| Finish | : | White/Grey Matt | Black/Chrome Matt | |
| Kelvin* | : | 3000K | 4000K | 6500K |
| Beam Angle | : | 30° | 60° | 120° |
| CRI | : | 80+ | | |
| Driver | : | ON/OFF | 0/1-10V | DALI |

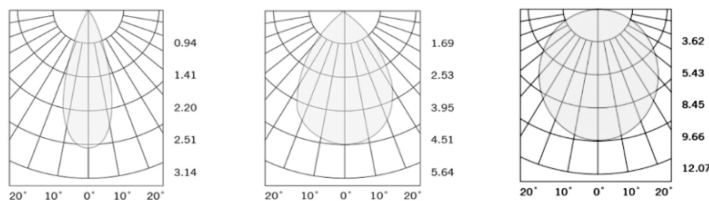
*Special Color & Finish on request

Product Code (53904003):

| Wattage | Lumens(lm) | Dimension(LxWxH) mm | Cut Out(φmm) |
|---------|------------|---------------------|--------------|
| 3 | 150LM | 86 x 86 x 45 | 80X 80 X51 |

*Luminous flux value is calculated for 4000K CRI>80

Photometric:



Pluxb luminaires are developed with globally recognized and tested components suppliers, however as per international standards tolerance in initial flux and connected load is at ±5%. Unless stated otherwise, the values apply to an ambient temperature of 25°C

Standards

EN 60598-1

EN 60598-2-2

EN 60598-3-2

EN 60598-3-3

Order Code Ex: 53904003 30K 30D 8 1 W

| CCT | Beam Angle | CRI | Driver | Finish |
|-------------|-------------|-------|-------------|---------------------|
| 30K - 3000K | 30D - 30° | 8->80 | 1 - ON/OFF | W-White/Grey Matt |
| 40K - 4000K | 60D - 60° | | 2 - 0/1-10V | B-Black/Chrome Matt |
| 65K - 6500K | 120D - 120° | | 3 - DALI | |

Pluxb luminaires are developed with globally recognized and tested components suppliers, however as per international standards tolerance in initial flux and connected load is at $\pm 5\%$. Unless stated otherwise, the values apply to an ambient temperature of 25°C