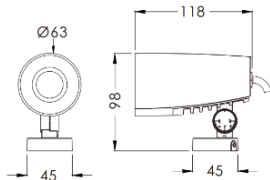


## CICA



### Description:

CICA is a high-quality Floodlights, bionic design, rich textured design composed of die-casting aluminum parts, reflector, tempered glass.

High-quality outdoor Powder coating spraying process. Tough weather resistance and protection grade is IP65.

Die-casting molding process, good heat dissipation performance. Deep anti-glare reflector design, clean light spot, with good anti-glare effect.

Easy installation, angle adjustable from two directions which can precisely meet the lighting needs of lighting trees, architecture and sculpture.

### Product Specifications:

Housing : Die cast aluminium

Coating: Powder Coating

Diffuser : Tempered glass

Net Weight : 0.51KG

Gasket : Molding shaped silicone seal

Lens/Reflector : Optical lens (efficiency>90%)

Power Cable: 0.5 mt. power cable included

Driver : High efficiency, low flicker driver

Installation Type: Surface Mounted

Adjustable: Yes

### Technical Specifications:

Wattage: 10W

Voltage: AC220-240V

Frequency: 50-60Hz

Light Source: CREE XPE2

Lumen: 65lm/W

Mac Adam: 3 Step

Safety Class: III / II

Working Temperature:-40°C to 50°C

Life Time: 50,000hrs (L90/B60) at 35°C

Warranty: 5 Years

### Parameter:

Wattage(W)	:	10W
Finish	:	Silver (S) / Black (B) / Customized (C)
Kelvin*	:	2700K/ 3000K / 4000K / 6000K
Beam Angle	:	15° / 24° / 38°
CRI	:	80
Control Mode	:	ON/OFF / DALI

EN 60598-1

EN 60598-2-2

EN 60598-3-2

EN 60598-3-3

Product Code	Wattage	CCT	Voltage(AC)	Beam Angle	Finish	Control Mode
541063	10-10W	27-2700K	A-220-265VAC	15 - 15°	S- Silver	1-ON/OFF
		30-3000K		24 - 24°	B-Black	2-DALI
		40- 4000K		38 - 38°	C-Customized	
		60-6000K				

Ex: Order Code: 5410631027A'15S1