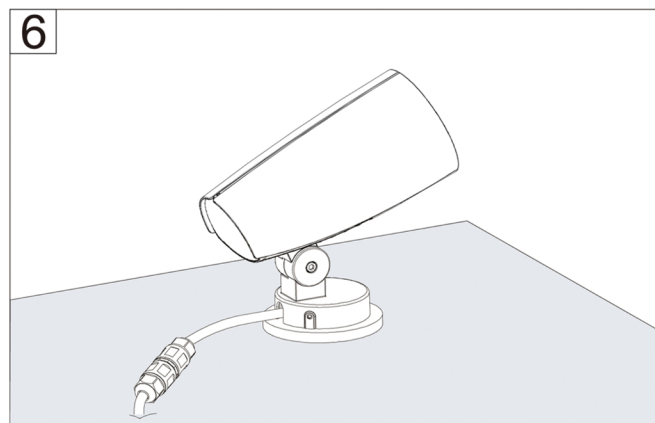
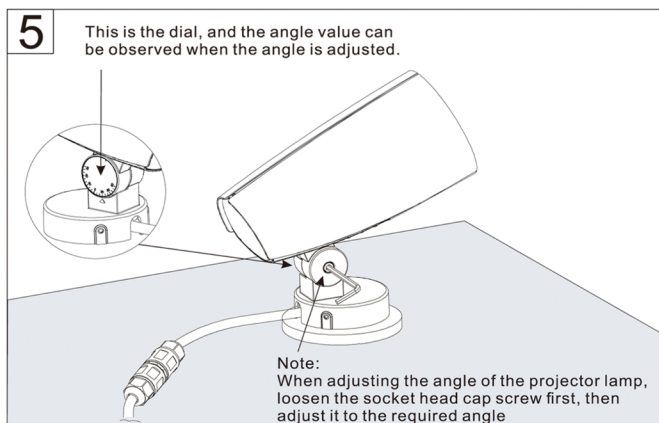
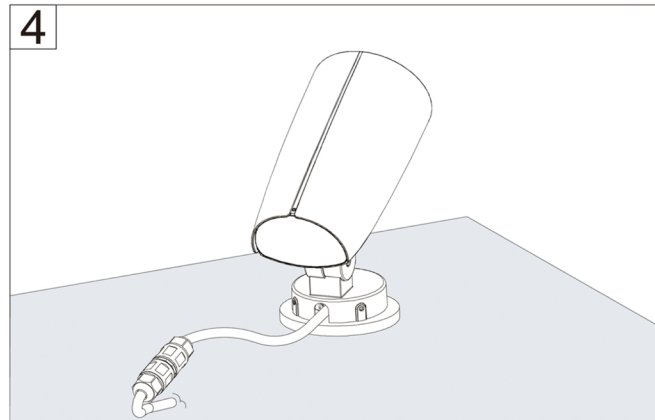
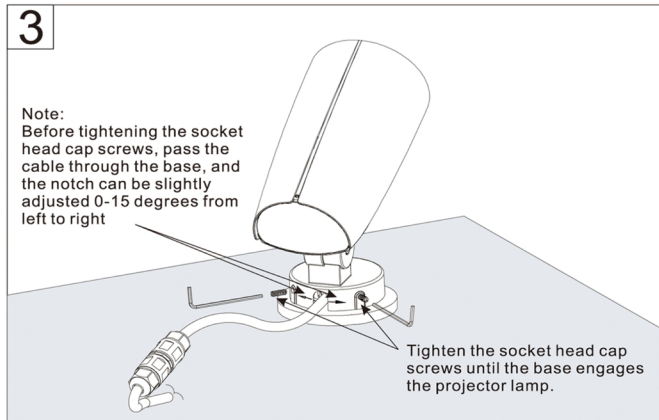
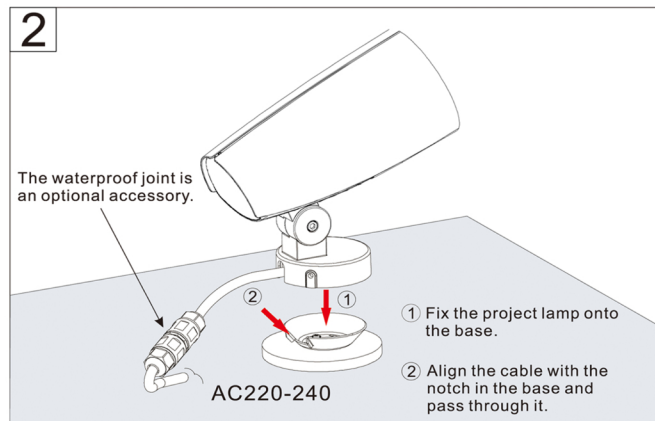
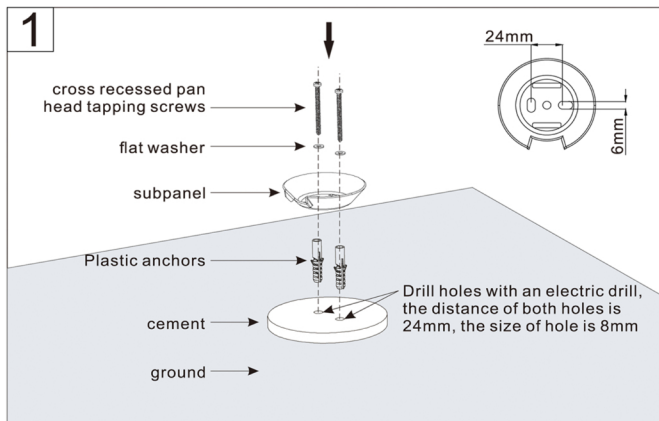
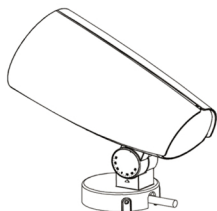


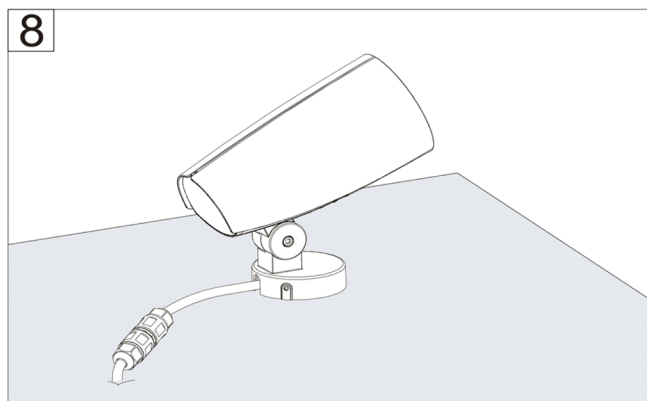
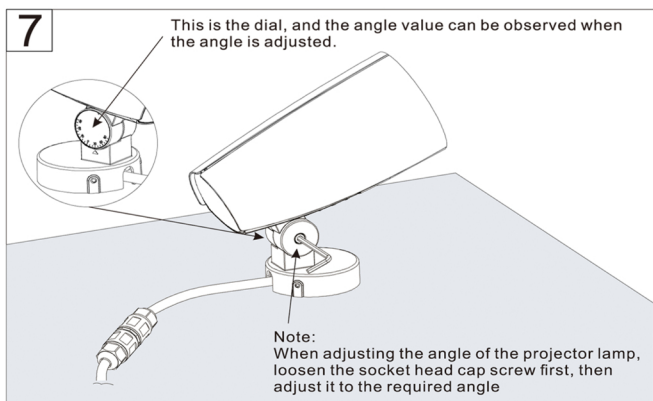
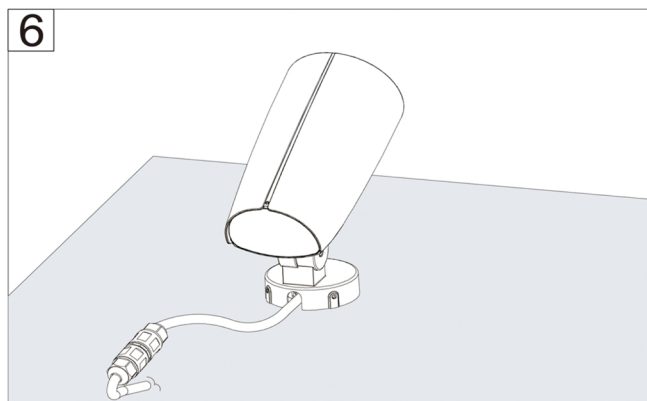
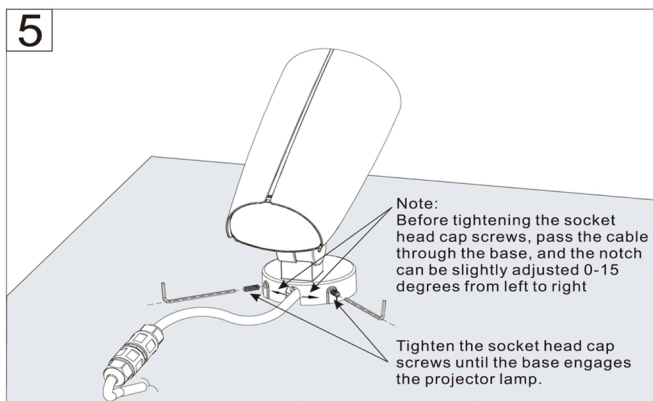
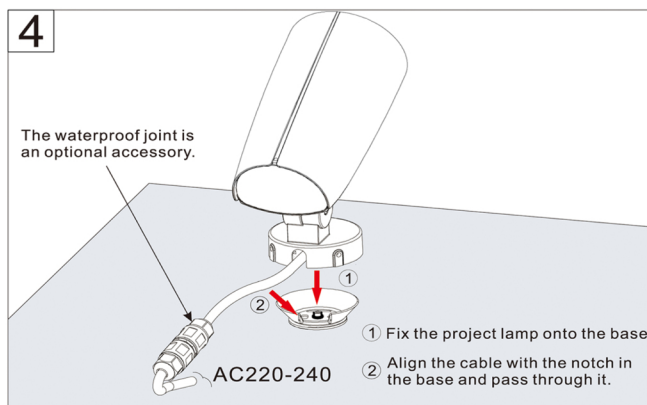
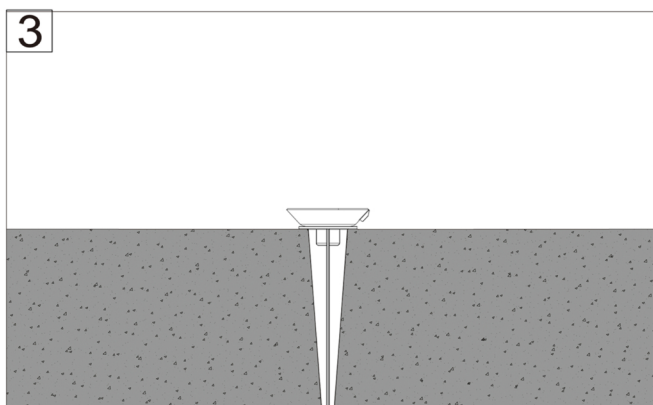
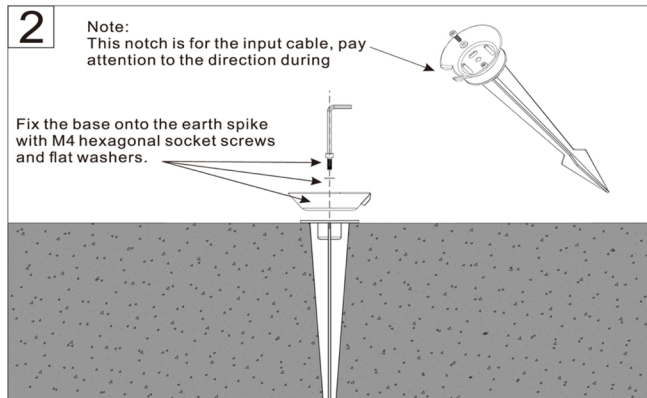
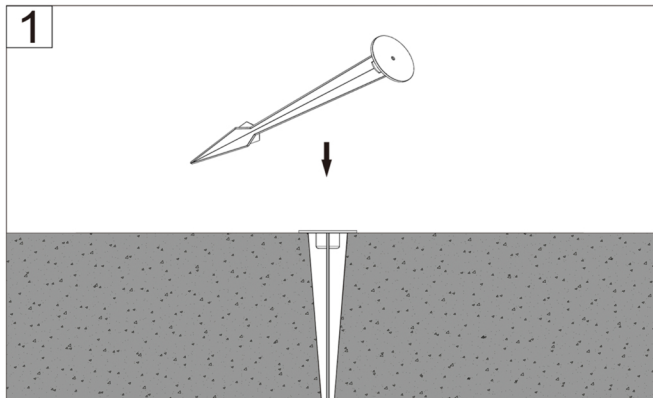
# Installation Instructions for 40W and 27W Projector Lamp



Pluxb luminaires are developed with globally recognized and tested components suppliers, however as per international standards tolerance in initial flux and connected load is at  $\pm 5\%$ . Unless stated otherwise, the values apply to an ambient temperature of  $25^{\circ}\text{C}$



# Installation Instructions for 40W and 27W Projector Lamp (with earth spike)



Pluxb luminaires are developed with globally recognized and tested components suppliers, however as per international standards tolerance in initial flux and connected load is at  $\pm 5\%$ . Unless stated otherwise, the values apply to an ambient temperature of  $25^{\circ}\text{C}$