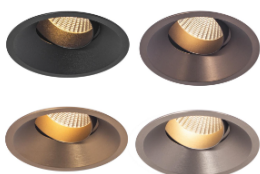
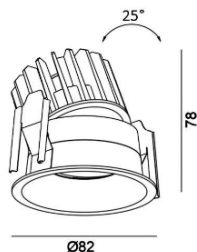


CHIO



Features:

CHIO sleek design, durability, and high-performance surface.

Die cast aluminum body with round tiltable Recessed Downlight design, and high-quality PC diffuser with different beam angle, renowned for its superior optical clarity and durability.

25° tiltable light focus make this fitting good for ambient lighting.

UGR <19 this spotlight sets a new standard in visual comfort.

Where innovation meets elegance to illuminate spaces with unparalleled brilliance and comfort.

Technical Specifications:

Input Voltage: 220- 240V AC, 50/60Hz.

Wattage: 8-10W

High Lumen: 100lm/w

Light source: Citizen CLU02Q-1202

2 STEP Mac Adam

High efficiency, low flicker driver

Lamp Type: COB

Operating Temperature: -20°C to 45°C

Glow Wire Test 850° C

Warranty: 5 Years

Life Time: 50,000hrs at ta 25°C
(L90/B10)

Fields of Application:

Retail

Education

Galleries hotels

Living spaces


Installation Method:

Round Semi tiltable Recessed Downlight

Wattage(W)	:	8	10			
Finish	:	White(W)	Black(B)	Varnish	Light Bronze	Dark Bronze
Kelvin*	:	2700K	3000K	4000K		
Beam Angle	:	15°	24°	36°	60°	
CRI	:	90+				
Driver	:	ON/OFF	0/1-10V	DALI	Phase Dimming	Bluetooth

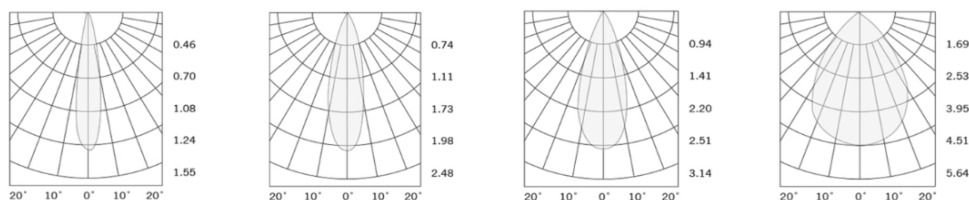
*Special Color and Finish on request

Product Code (96708210.50):

Wattage	Lumens(lm)	Dimension(Ø x H) mm	Cut Out  (mm)
8	800LM	82x78	75
10	1000LM	82x78	75

*Luminous lux value is calculated for 4000K CRI>90

Photometric:



- Standards
- EN 60598-1
- EN 60598-2-2
- EN 60598-2-22
- EN 60598-3-2
- EN 60598-3-3

Order Code Ex: 96708210.50 27K 15D 9 1 W

CCT	Beam Angle	CRI	Driver	Finish
27K - 2700K	15D - 15°	9->90	1 - ON/OFF	W-White
30K - 3000K	24D - 24°		2 - 0/1-10V	B-Black
40K - 4000K	36D - 36°		3 - DALI	V-Varnish
	60D - 60°		4 - Phase Dimming	L-Light Bronze
			5 - Bluetooth	D-Dark Bronze

Pluxb luminaires are developed with globally recognized and tested components suppliers, however as per international standards tolerance in initial flux and connected load is at ±5%. Unless stated otherwise, the values apply to an ambient temperature of 25°C