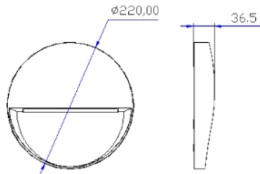
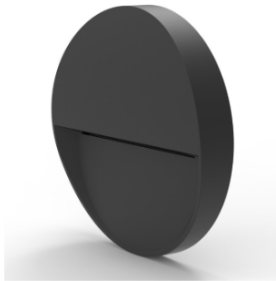


CARLO



Description:

CARLO is a wall light offers dual installation options—surface-mounted or recessed—providing flexibility to suit a wide range of architectural needs. Its sleek, slim curve design adds a modern aesthetic touch, while the indirect light distribution delivers a high-lumen output with clean, sharp lighting effects, ideal for both decorative and functional outdoor or indoor applications.

Crafted from die-cast aluminum with high corrosion resistance, the fixture ensures long-lasting durability.

With an IP66-rated main body, the luminaire is built to perform reliably in harsh environments.

C5 Marine Grade Coating available on request. Additionally, the interchangeable colored frames allow for easy customization, helping reduce inventory requirements while meeting diverse design preferences.

Product Specifications:

Front cover : Die cast Aluminium
Housing : Die cast Aluminium grey
Diffuser : Clear Glass
Gasket: Moulding shaped silicone seal
Lens/Reflector : Optical lens (efficiency>90%)
Power Cable: 0.5 mt. power cable included
Driver : High efficiency, low flicker driver
Installation Type: Surface mounted / Recessed
Adjustable: No

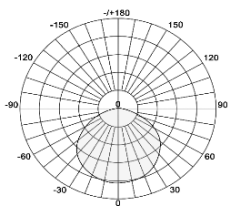
Technical Specifications:

Wattage: 10.6W
Voltage: 220-240VAC
Frequency: 50-60Hz
Light Source: OSRAM/EPISTAR/CREE
Lumen: 30lm/W
Mac Adam: 3 Step
Safety Class: I
Working Temperature:-20°C to 55°C
Life Time: 50,000hrs (L80/B10) at 35°C
Warranty: 5 Years

Parameter:

Wattage(W)	:	10.6W
Finish	:	Grey (G) / Black (B) / White (W)
Kelvin*	:	2700K/ 3000K / 4000K / 6000K
Beam Angle	:	Asymmetric Angle
CRI	:	80+ 90+
Control Mode	:	ON/OFF / DALI / 0 / 1-10V

Photometric:



Standards :

EN 60598-1
EN 60598-2-2
EN 60598-3-2
EN 60598-3-3

Order Code:

Product Code	Wattage	CCT	Voltage	Beam Angle	Finish	Control Mode
540220	10-10.6W	27-2700K 30-3000K 40-4000K 60-6000K	A-220-240VAC	AS- Asymmetric	G-Grey B-Black W-White	1-ON/OFF 2-DALI 3-0/1-10V

Ex: Order Code: 5402201027A/ASG1

Pluxb luminaires are developed with globally recognized and tested components suppliers, however as per international standards tolerance in initial flux and connected load is at $\pm 5\%$. Unless stated otherwise, the values apply to an ambient temperature of 25°C