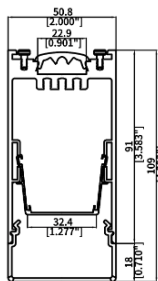
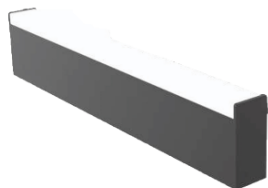


BAR IV 51



Features:

BAR IV 51 Linear Extruded Aluminum Profile with highest standard 6063-T6 aluminum, deep anodizing (more than 12µm) that protects against corrosion and extends durability, Matt surface treatment.

Elegant appearance with screwless aluminum endcap, and all the diffusers and lens are UV stabilized, no inclusions or scratches on the surface.

Continues Seamless diffuser up to 24mm length.

Standard Length with Zagha PCBs Linear Modules 570 mm / 1200 mm/ 1480 mm/ 1920mm, tailored length can be manufactured as per design, and different options of beam angels as project requirements.

The Mounting can be with Suspended Direct, suspended Direct / Indirect.

Direct Lighting Optics, PMMA Frosted diffuser, PMMA Frosted diffuser - 3 Sides, Micro prismatic Lens, Micro prismatic lens - 3 sides, Double Asymmetric lens, single Asymmetric lens.

Indirect Optics Lens is Batwing TIR lens.

Technical Specifications:

Input Voltage: 220- 240 V AC, 50 Hz.

Wattage /M: 20-70W

Efficacy/W: 130lm

Material: 6063 T6 Aluminum + PMMA

3 STEP Mac Adam

High Efficiency, Low Flicker Driver

Lamp Type: Linear SMD Rigid Module

Operating Temperature: -20°C to 45°C

Glow Wire Test 850° C

Warranty: 5 Years

Life Time: 50,000hrs at ta 25°C

(L80/B10)

Fields of Application:

Retail

Education

Galleries hotels

Living spaces

Installation Method:

Surface Mounted / Suspended.

Wattage(W)	:	20	35	45	60	70	
Finish	:	White(W)	Black(B)	Sliver (S)	Customized		
Kelvin*	:	2700K	3000K	4000K	5000K	6500K	Tunable
Beam Angle	:	120°					
CRI	:	80+	90+				
Driver	:	ON/OFF	0/1-10V	DALI	Phase Dimming	Bluetooth	

*Special Color and Finish on request

Product Code (9645110970):

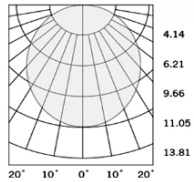
Wattage	Lumens(lm)	Dimension (WxH) mm	Length (L) mm
20	2600LM	51x109	990
35	4550LM	51x109	1200
45	5850LM	51x109	1480
60	7800LM	51x109	1970
70	9100LM	51x109	2100

*Luminous flux value is calculated for 4000K CRI>80

* Length and Wattage can be customized as per design

Pluxb luminaires are developed with globally recognized and tested components suppliers, however as per international standards tolerance in initial flux and connected load is at ±5%. Unless stated otherwise, the values apply to an ambient temperature of 25°C

Photometric:



Standards

EN 60598-1

EN 60598-2-2

EN 60598-2-22

EN 60598-3-2

EN 60598-3-3

Order Code Ex: 9645110970 27K 120D 8 1 W

CCT	Beam Angle	CRI	Driver	Finish
27K - 2700K	120D - 120°	8->80	1 - ON/OFF	W-White
30K - 3000K		9->90	2 - 0/1-10V	B-Black
40K - 4000K			3 - DALI	Ø-Ønbsp;Sliver
50K - 5000K			4 - Phase Dimming	C-Customized
65K - 6500K			5 - Bluetooth	
TuK - Tunable				

Pluxb luminaires are developed with globally recognized and tested components suppliers, however as per international standards tolerance in initial flux and connected load is at $\pm 5\%$. Unless stated otherwise, the values apply to an ambient temperature of 25°C