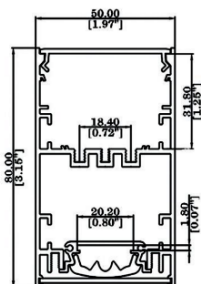
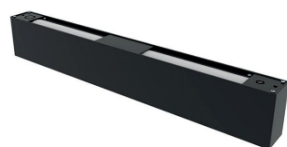


## BAR IV 50



### Features:

BAR IV 50 Linear Extruded Aluminum Profile with highest standard 6063-T6 aluminum, and invisible Screw aluminum endcap, deep anodizing (more than 12µm) that protects against corrosion and extends durability, Matt surface treatment.

Opal PC Diffuser / Micro Prismatic Lens / Prism Lens + Optics Diffusion sheet, all diffusers and lens are UV stabilized, no inclusions or scratches on the surface.

The diffuser available with UGR<16, and with extra wide beam for indirect.

Standard Length with Zagha Linear Modules 570 mm / 1200 mm/ 1480 mm/ 1920mm, tailored length can be manufactured as per design.

Homogenous, well-balanced light dispersing with no shadow.

### Technical Specifications:

Input Voltage: 220- 240 V AC, 50 Hz.

Wattage /M: 20 - 60W

Efficacy: 130lm/w

3 STEP Mac Adam

High Efficiency, Low Flicker Driver

Light Source: SMD 2835 / 3030 / 3535

Operating Temperature: -20°C to 45°C

Glow Wire Test 850° C

Warranty: 5 Years

Life Time: 50,000hrs at ta 25°C

(L90/B10)

### Fields of Application:

Retail

Education

Galleries hotels

Living spaces

### Installation Method:

Surface Mounted / Suspended.

Wattage(W)	:	20	35	45	60		
Finish	:	White(W)	Black(B)	Silver(S)	Customized		
Kelvin*	:	2700K	3000K	4000K	5000K	5700K	Tunable
Beam Angle	:	90°	110°	145°			
CRI	:	80+	90+	Tunable			
Driver	:	ON/OFF	0/1-10V	DALI	Phase Dimming	Bluetooth	

\*Special Color and Finish on request

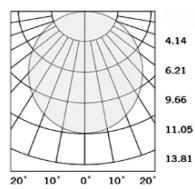
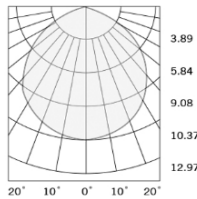
### Product Code (964508060):

Wattage	Lumens(lm)	Dimension(W XH) mm	Length (L) mm
20	2600 LM	50x80	990
35	4550 LM	50x80	1200
40	5200 LM	50x80	1480
60	7800 LM	50x80	1970

\*Luminous flux value is calculated for 4000K CRI>80

\* Length and Wattage can be customized as per design

## Photometric:



### Standards

EN 60598-1

EN 60598-2-2

EN 60598-3-2

EN 60598-3-3

Order Code Ex: 964508060 27K 90D 8 1 W

CCT	Beam Angle	CRI	Driver	Finish
27K - 2700K	90D - 90°	8->80	1 - ON/OFF	W-White
30K - 3000K	110D - 110°	9->90	2 - 0/1-10V	B-Black
40K - 4000K	145D - 145°	T->Tunable	3 - DALI	S-Silver
50K - 5000K			4 - Phase Dimming	C-Customized
57K - 5700K			5 - Bluetooth	
TuK - Tunable				

Pluxb luminaires are developed with globally recognized and tested components suppliers, however as per international standards tolerance in initial flux and connected load is at  $\pm 5\%$ . Unless stated otherwise, the values apply to an ambient temperature of 25°C