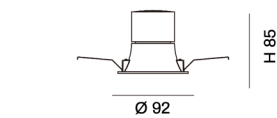
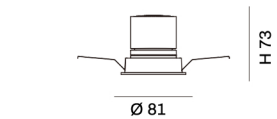
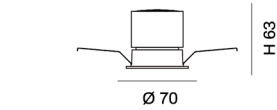


ARCH I



Features:

ARCH I is recessed fixed, adjustable and deep anti-glare spotlight with die cast aluminum body and PMMA lens.

Thermally engineered heatsink creates highly efficient passive cooling system.

Protect angle >40, UGR <13.

Anti-glare accessory provides maximum eye comfort.

Easy installation.

Homogenous, well-balanced light dispersing, no shadow.

Technical Specifications:

Input Voltage: 220-240 V AC, 50 Hz.

Wattage: 10W

High Lumen: 80lm/w

3 STEP Mac Adam

High efficiency, low flicker driver

Lamp Type: COB

Operating Temperature: -20°C to 45°C

Glow Wire Test 850°C

Warranty: 5 Years

Life Time: 50,000hrs at 25°C (L80/B10)

Fields of Application :

Retail
Counters
Restaurants
Galleries hotels
Living spaces
Conference rooms

Installation Method :

Recessed / Adjustable

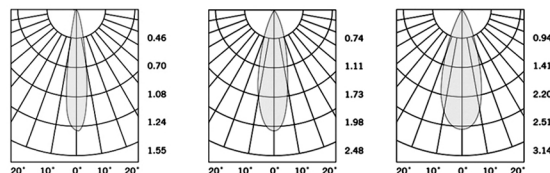
Wattage(W)	:	10			
Finish	:	Black(B)	White(W)	Grey(G)	Bronze
Kelvin*	:	2700K	3000K	4000K	5000K
Beam Angle	:	15°	24°	36°	
CRI	:	90+			
Driver	:	ON/OFF	0/1-10V	DALI	Phase Dimming
Type	:	A	B	C	

*Special Color & Finish on request

Product Code	Max Wattage	Lumens(lm)	Dimension(mm)	CutOut \varnothing (mm)	Type
96707010	10	800LM	70x63	65	A
96708110	10	800LM	81x73	75	B
96709210	10	800LM	92x85	85	C

*Luminous flux value is calculated for 4000K CRI>80

Photometric:



Standards

EN 60598-1

EN 60598-2-2

EN 60598-2-22

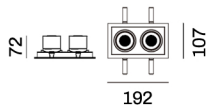
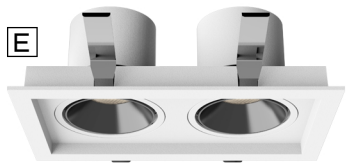
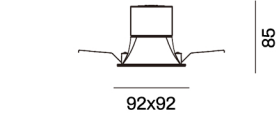
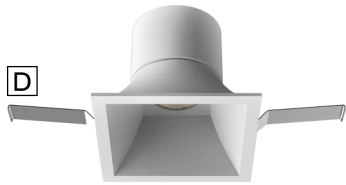
EN 60598-3-2

Order Code Ex : 96709210 27K 15D 9 1 B A

CCT	Beam Angle	CRI	Driver	Finish	Type
27K-2700K	15D-15°	9-90	ON/OFF 0/1-10V DALI Phase Dimming	Black(B)	A
30K-3000K	24D-24°			White(W)	B
40K-4000K	36D-36°				C

Pluxb luminaires are developed with globally recognized and tested components suppliers, however as per international standards tolerance in initial flux and connected load is at $\pm 5\%$. Unless stated otherwise, the values apply to an ambient temperature of 25°C

ARCH I



Features:

ARCH I is recessed fixed, adjustable and deep anti-glare spotlight with die cast aluminum body and PMMA lens.

Thermally engineered heatsink creates highly efficient passive cooling system.

Protect angle >40, UGR <13.

Anti-glare accessory provides maximum eye comfort.

Easy installation.

Homogenous, well-balanced light dispersing, no shadow.

Technical Specifications:

Input Voltage: 220-240 V AC, 50 Hz.

Wattage: 10-2x10W

High Lumen: 80lm/w

3 STEP Mac Adam

High efficiency, low flicker driver

Lamp Type: COB

Operating Temperature: -20°C to 45°C

Glow Wire Test 850°C

Warranty: 5 Years

Life Time: 50,000hrs at 25°C (L80/B10)

Fields of Application :

- Retail
- Counters
- Restaurants
- Galleries hotels
- Living spaces
- Conference rooms

Installation Method :

Recessed / Adjustable

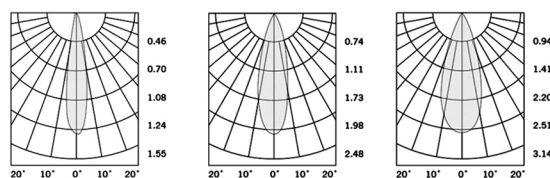
Wattage(W)	:	10	2x10		
Finish	:	Black(B)	White(W)	Grey(G)	Bronze
Kelvin*	:	2700K	3000K	4000K	5000K
Beam Angle	:	15°	24°	36°	
CRI	:	90+			
Driver	:	ON/OFF	0/1-10V	DALI	Phase Dimming
Type	:	D	E		

*Special Color & Finish on request

Product Code	Wattage	Lumens(lm)	Dimension(mm)	CutOut ϕ (mm)	Type
97709210	10	800LM	92x92x85	85x85	D
97719220	2x10	1600LM	192x107x72	180x95	E

*Luminous flux value is calculated for 4000K CRI>80

Photometric:



Standards

EN 60598-1

EN 60598-2-2

EN 60598-2-22

EN 60598-3-2

Order Code Ex : 97719220 27K 15D 9 1 B D

CCT	Beam Angle	CRI	Driver	Finish	Type
27K-2700K	15D-15°	9->80	ON/OFF	Black(B)	D
30K-3000K	24D-24°		0/1-10V	White(W)	E
40K-4000K	36D-36°		DALI		
50K-5000K			Phase Dimming		

Pluxb luminaires are developed with globally recognized and tested components suppliers, however as per international standards tolerance in initial flux and connected load is at $\pm 5\%$. Unless stated otherwise, the values apply to an ambient temperature of 25°C