

ALLEN I

Flex Sheet 300x300mm Specification



- DC24V low voltage input
- IP 20
- UGR <19
- 3 Step Mac Adam
- CRI 90+
- Flexible Printed Circuit-Board
- Uniform light emission, good appearance consistency
- Good flexibility, small size, light weight, easy installation
- 5 years warranty

Technologies

- ON/OFF, DALI

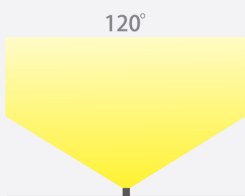
Features

- The light source adopts 2835 packaged lamp beads.
- It adopts FPC flexible board and can be bent appropriately.
- The product is equipped with a shearing position, allowing for shearing or cascading as required.
- It has excellent attenuation function and a long service life of the chip.
- It can be connected to an external controller to create rich scene effects.
- This product features a dimming function and supports dimming methods such as DALI

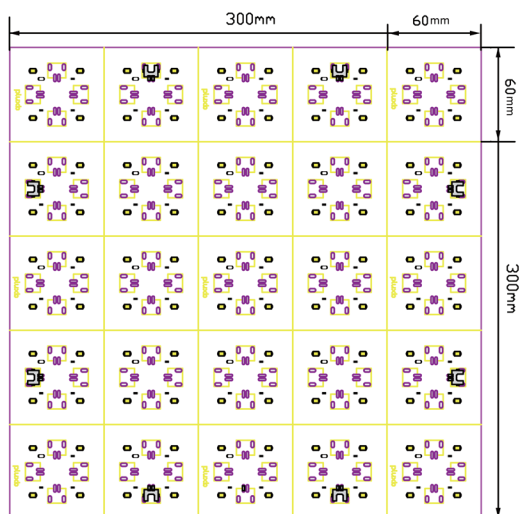
Color Options



Beam Angle



Dimensions



Pluxb luminaires are developed with globally recognized and tested components suppliers, however as per international standards tolerance in initial flux and connected load is at $\pm 5\%$. Unless stated otherwise, the values apply to an ambient temperature of 25°C

ALLEN I

Product Specifications

P/N	LED Quantity	Size mm	Voltage DC<V>	Flux lm	Efficiency Lm/W	Power W / Sheet	CCT K	IC
ALLEN I 411020200-27	100/PCS	300x300	24	264	132	2W	2700K	/
ALLEN I 411020200-30	100/PCS	300x300	24	270	135	2W	3000K	/
ALLEN I 411020200-35	100/PCS	300x300	24	276	138	2W	3500K	/
ALLEN I 411020200-40	100/PCS	300x300	24	290	145	2W	4000K	/
ALLEN I 411020200-60	100/PCS	300x300	24	298	149	2W	6000K	/
ALLEN I 411020400-27	100/PCS	300x300	24	528	132	4W	2700K	/
ALLEN I 411020400-30	100/PCS	300x300	24	540	135	4W	3000K	/
ALLEN I 411020400-35	100/PCS	300x300	24	552	138	4W	3500K	/
ALLEN I 411020400-40	100/PCS	300x300	24	580	145	4W	4000K	/
ALLEN I 411020400-60	100/PCS	300x300	24	596	149	4W	6000K	/
ALLEN I 411020800-27	100/PCS	300x300	24	1056	132	8W	2700K	/
ALLEN I 411020800-30	100/PCS	300x300	24	1080	135	8W	3000K	/
ALLEN I 411020800-35	100/PCS	300x300	24	1104	138	8W	3500K	/
ALLEN I 411020800-40	100/PCS	300x300	24	1160	145	8W	4000K	/
ALLEN I 411020800-60	100/PCS	300x300	24	1192	149	8W	6000K	/

Other Specifications

Protection Grade	IP20
Cutting Length	60x60
Working temperature	-25~+45
Storage temperature	-25~+80

Remarks

- The test environment temperature is 25±2°C;
- The above data are typical values, the actual parameters of the product may be different from the typical data; the data is subject to change without notice;

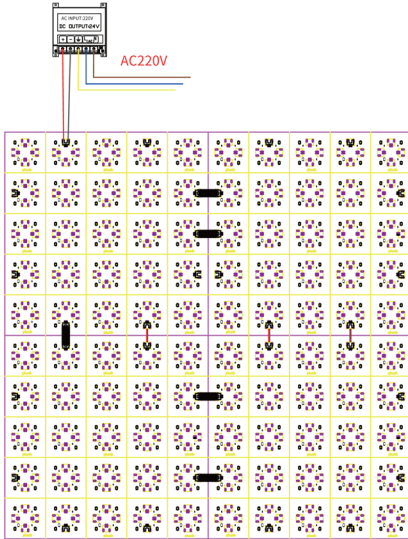
Applied Standard



Pluxb luminaires are developed with globally recognized and tested components suppliers, however as per international standards tolerance in initial flux and connected load is at ±5%. Unless stated otherwise, the values apply to an ambient temperature of 25°C

ALLEN I

Schematic diagram of electrical connection



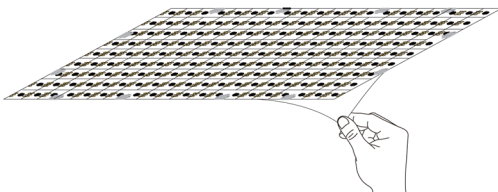
Cutting Method



Mounting on Surface

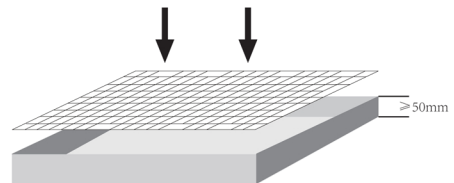
1

Schematic diagram of removing the back adhesive



2

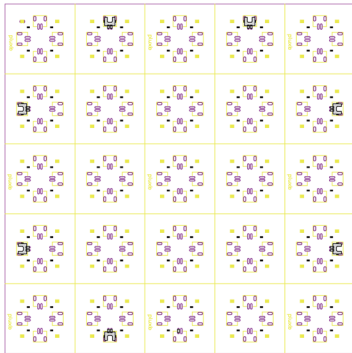
To be installed at the base of the light box.
A minimum light box depth of 50mm is required.



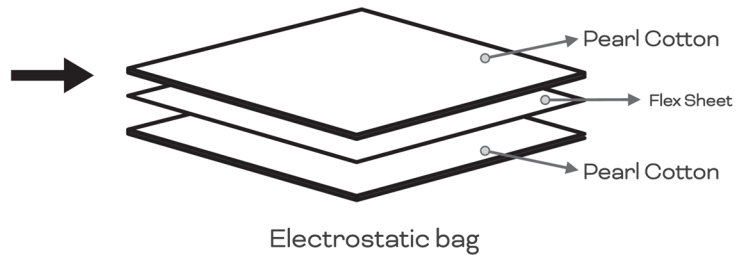
Pluxb luminaires are developed with globally recognized and tested components suppliers, however as per international standards tolerance in initial flux and connected load is at $\pm 5\%$. Unless stated otherwise, the values apply to an ambient temperature of 25°C

ALLEN I

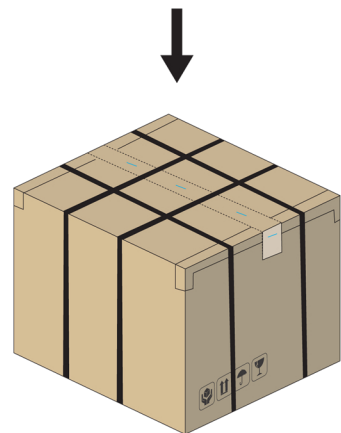
Package



Flex Sheet



Electrostatic bag



Packing completed

Note :The above-mentioned packaging quantity and weight are only for the packaging method shown in the figure. There will be differences in the number and weight of packaging for other packaging methods, and the actual product shall prevail.